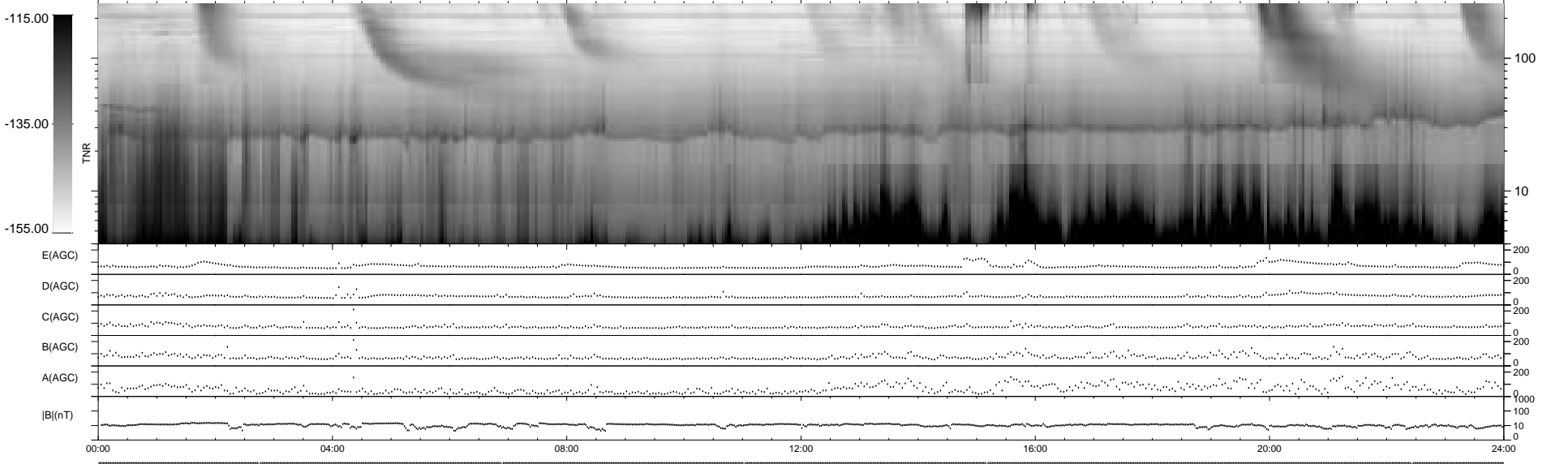
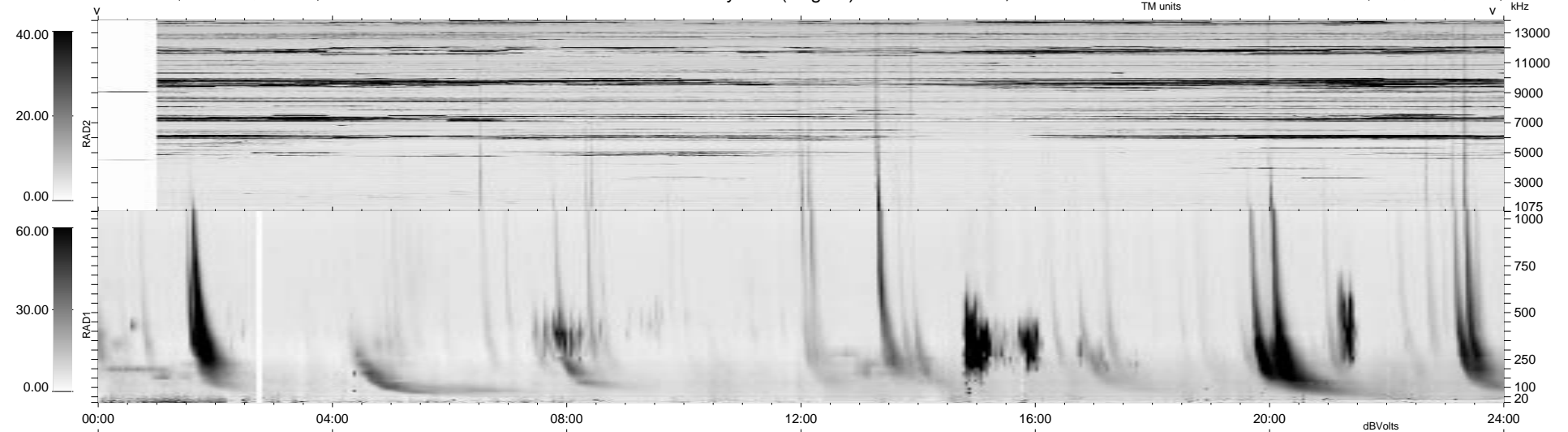


5 bad + 934 good MF/939MF projected (99%) - 0 missing MFs
 Avg interval = 180 secs
 Re = - 58.05 (-42.55, -37.79, 11.48 GSE)

1.7d VMS-SunOS LZ version = v01

WIND/WAVES Summary Plot (Page 1) for 26-FEB-1999, DOY = 57

DAILY Mon Sep 15, 2008
 Re = 66.05 (-46.25, -46.51, 7.74 GSE)



RAD2
 Antenna Ey
 Mode LIS(8,11) LIN(J)
 SUM/SEP SEP
 Toggle OFF
 RAD1
 Antenna Ex
 Mode LIS(2,3)
 SUM/SEP SUM
 Toggle OFF
 TNR
 Antenna ExEy
 Mode A-32
 Sweep ABCDE