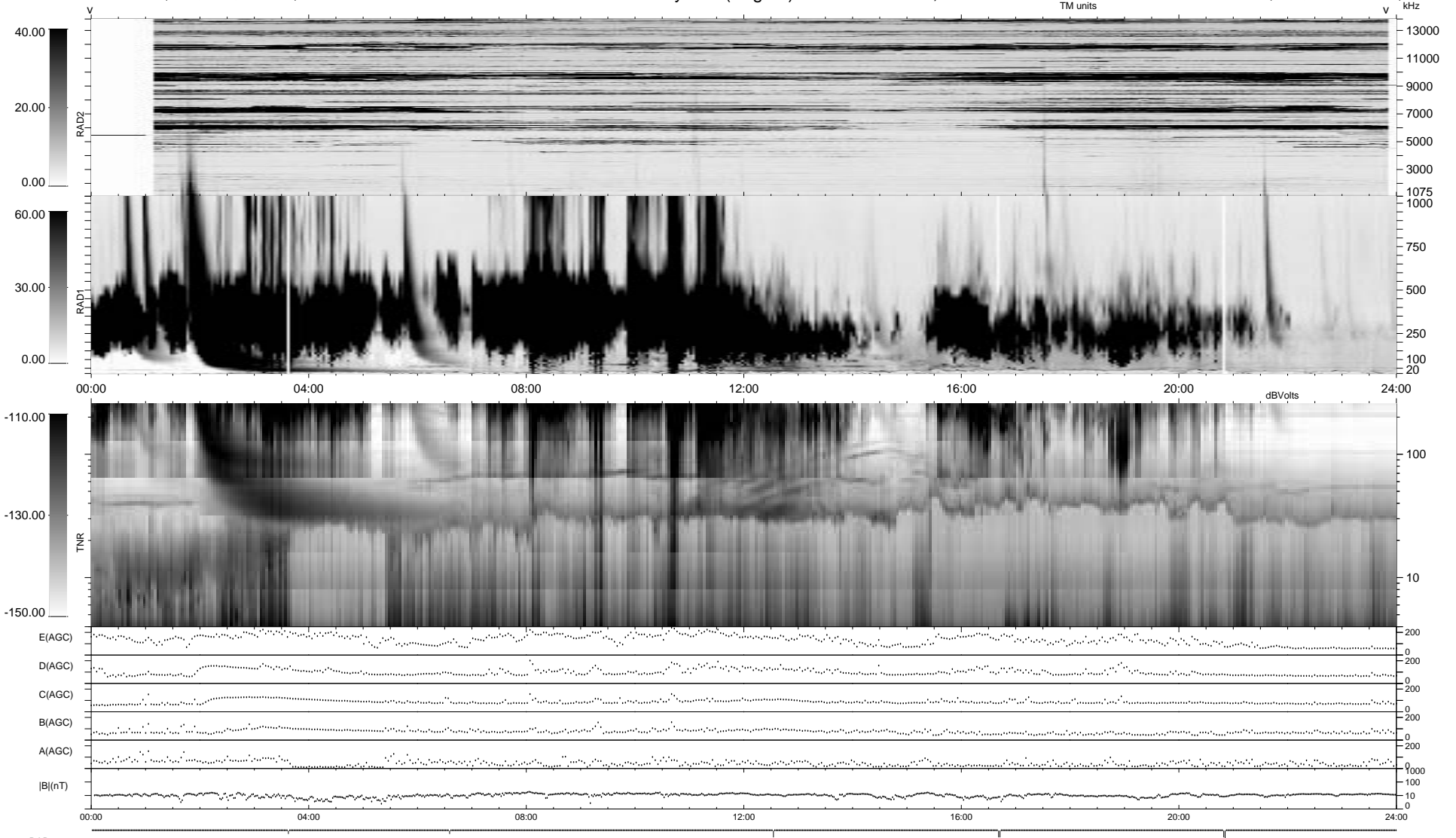


7 bad + 932 good MF/939MF projected (99%) - 0 missing MFs  
 Avg interval = 180 secs  
 Re = - 33.72 (-27.06, -12.36, 15.87 GSE)

1.7d VMS-SunOS LZ version = v01  
 DAILY Mon Sep 15, 2008  
 Re = 47.48 (-36.58, -26.55, 14.55 GSE)

### WIND/WAVES Summary Plot (Page 1) for 24-FEB-1999, DOY = 55



```

RAD2
Antenna Ey ..... LIN(1) ..... US(8,11)
Mode FIX(88)
SUM/SEP SEP
Toggle OFF
RAD1
Antenna Ex .....
Mode LIS(2,3)
SUM/SEP SUM
Toggle OFF
TNR
Antenna ExEy .....
Mode A-32
Sweep ABCDE
  
```