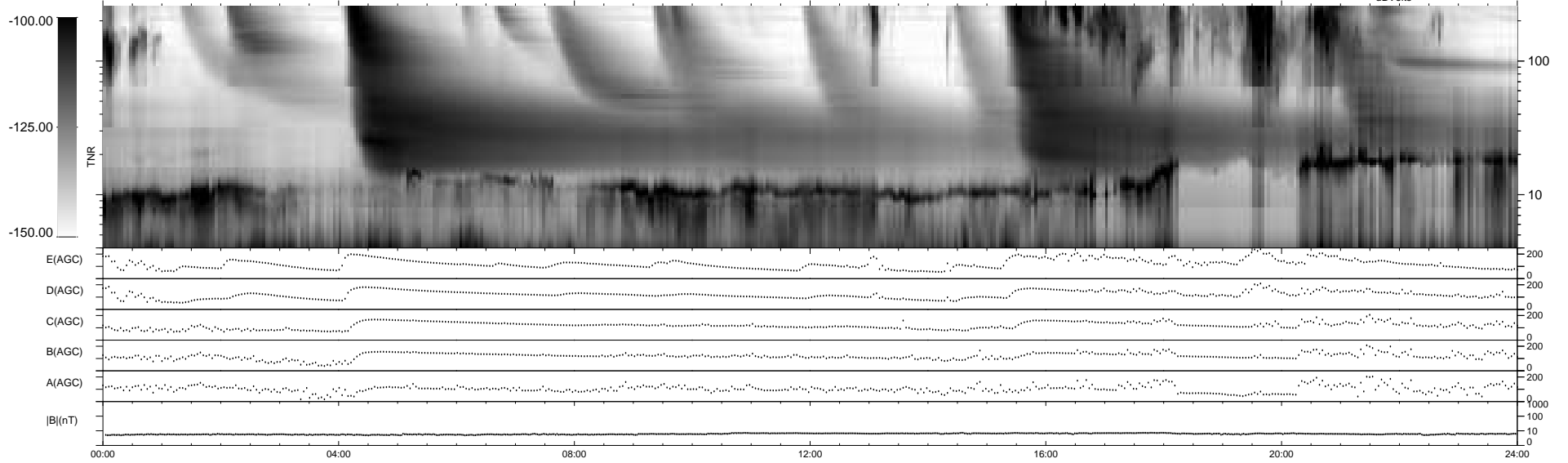
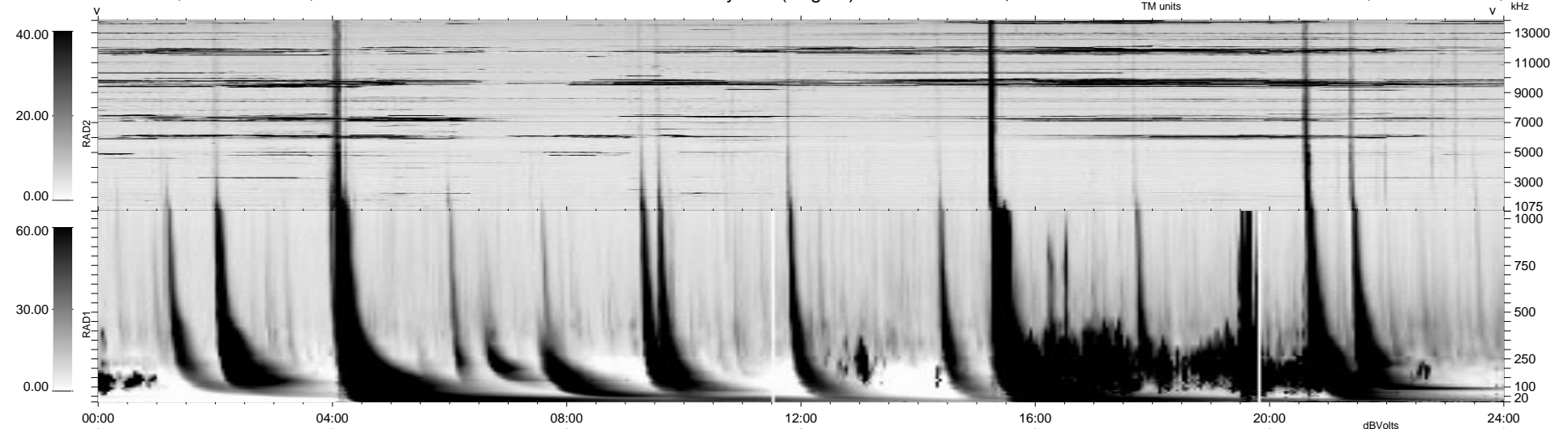


8 bad + 931 good MF/939MF projected (99%) - 0 missing MFs  
 Avg interval = 180 secs  
 Re = - 49.86 (1.04, -43.16, -24.95 GSE)

1.7d VMS-SunOS LZ version = v01

### WIND/WAVES Summary Plot (Page 1) for 20-FEB-1999, DOY = 51

DAILY Mon Sep 15, 2008  
 Re = 36.91 (6.92, -28.42, -22.51 GSE)



RAD2  
 Antenna Ey .....  
 Mode LIN(1) .....  
 SUM/SEP SEP .....  
 Toggle OFF .....  
 RAD1  
 Antenna Ex .....  
 Mode LIS(2,3) .....  
 SUM/SEP SUM .....  
 Toggle OFF .....  
 TNR  
 Antenna ExEy .....  
 Mode A-32 .....  
 Sweep ABCDE .....