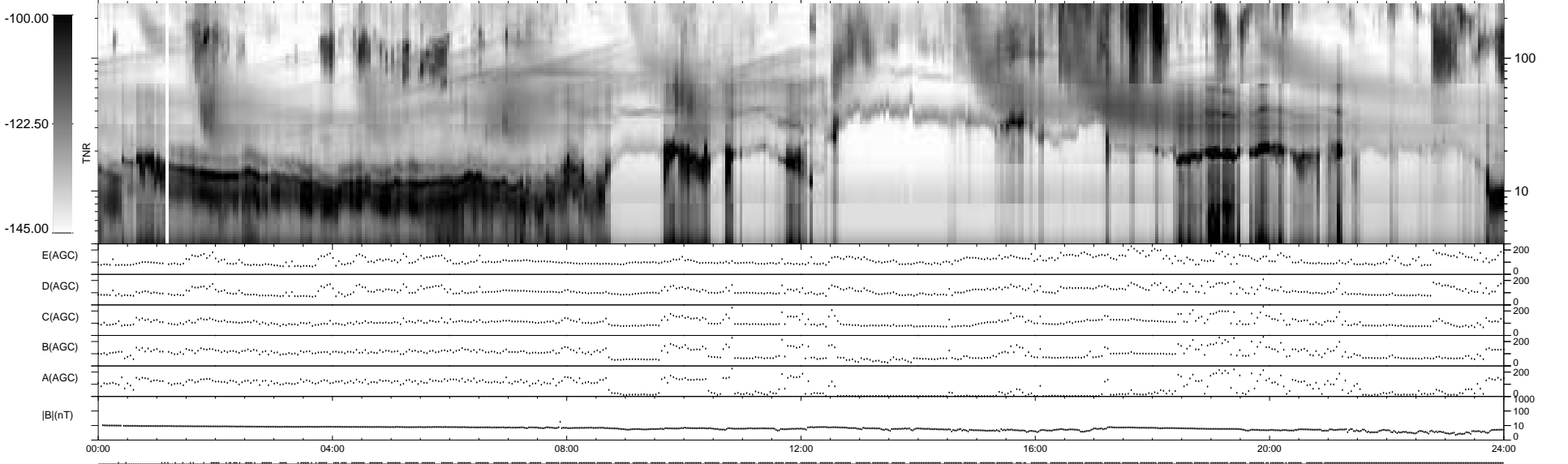
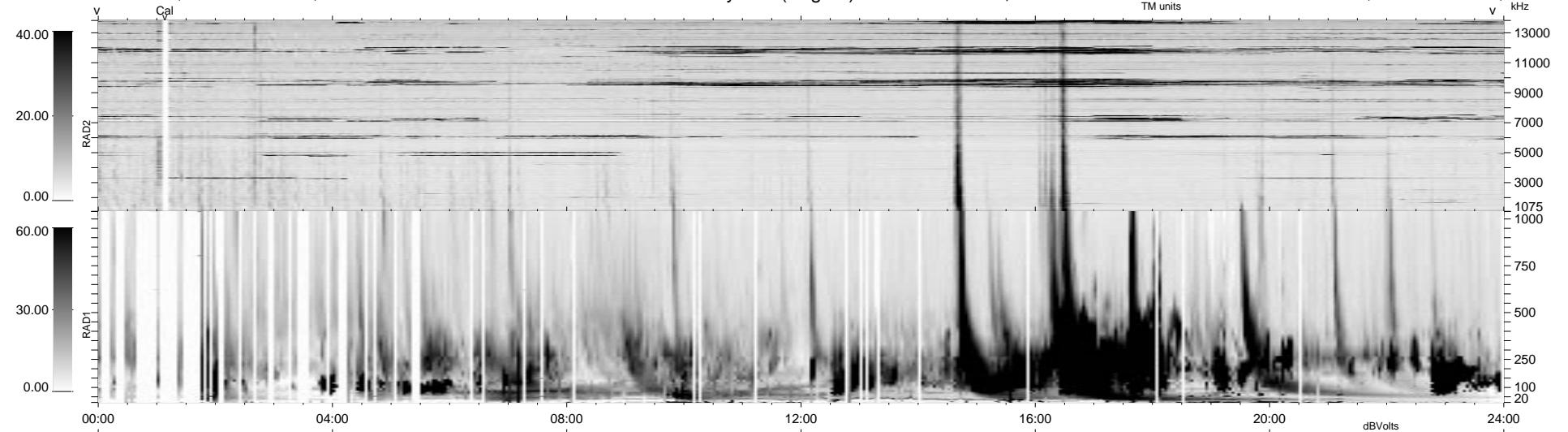


207 bad + 732 good MF/939MF projected (77%) - 0 missing MFs
 Avg interval = 180 secs
 Re = 59.80 (-4.63, -54.14, -24.97 GSE)

1.7d VMS-SunOS LZ version = v02

WIND/WAVES Summary Plot (Page 1) for 19-FEB-1999, DOY = 50

DAILY Mon Sep 15, 2008
 Re = 49.94 (1.00, -43.25, -24.96 GSE)



```

RAD2
Antenna Ey .....
Mode LIN(1) .....
SUM/SEP SEP .....
Toggle OFF .....

RAD1
Antenna Ex .....
Mode LIS(2,3) .....
SUM/SEP SUM .....
Toggle OFF .....

TNR
Antenna ExEy .....
Mode A-32 .....
Sweep ABCDE .....
  
```