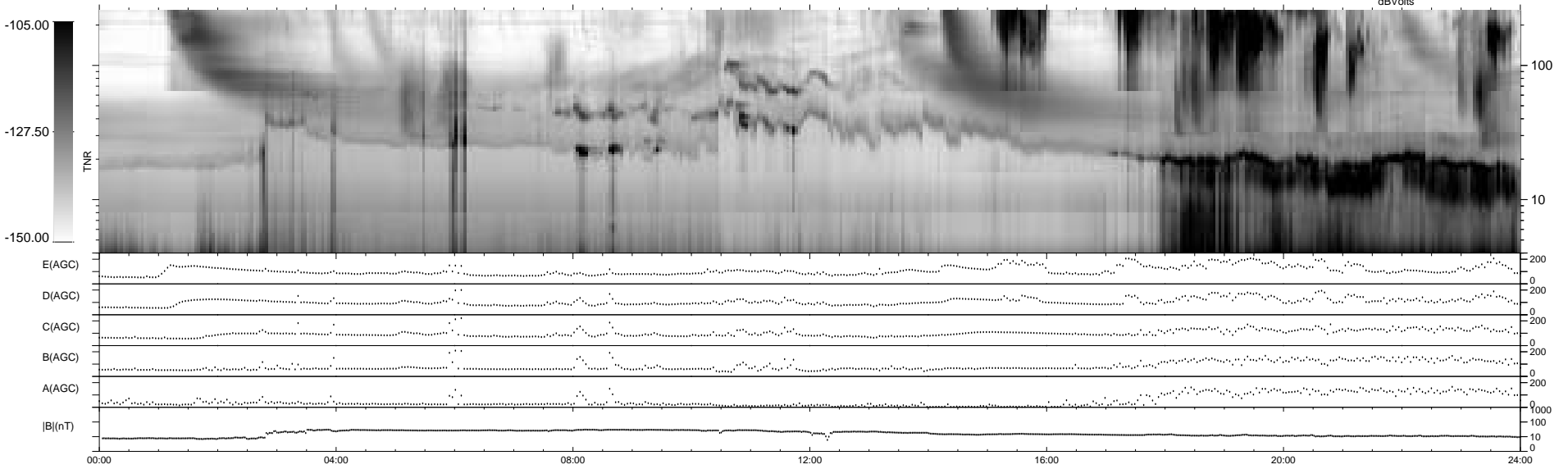
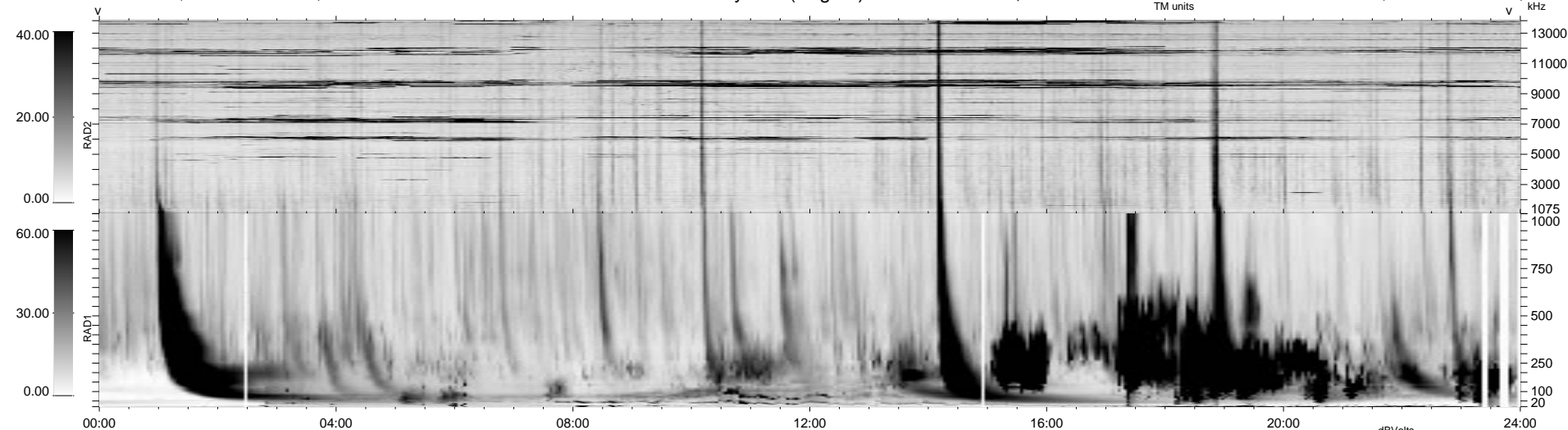


33 bad + 906 good MF/939MF projected (96%) - 0 missing MFs
 Avg interval = 180 secs
 Re = - 67.40 (-9.76, -62.38, -23.60 GSE)

1.7d VMS-SunOS LZ version = v01
 DAILY Mon Sep 15, 2008
 Re = 59.86 (-4.67, -54.20, -24.96 GSE)

WIND/WAVES Summary Plot (Page 1) for 18-FEB-1999, DOY = 49



RAD2
 Antenna Ey
 Mode LIN(1)
 SUM/SEP SEP
 Toggle OFF

RAD1
 Antenna Ex
 Mode LIS(2,3)
 SUM/SEP SUM
 Toggle OFF

TNR
 Antenna ExEy
 Mode A-32
 Sweep ABCDE