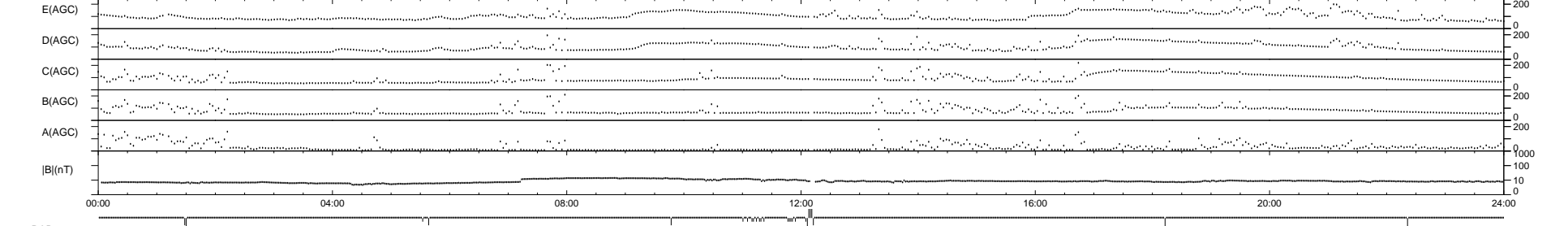
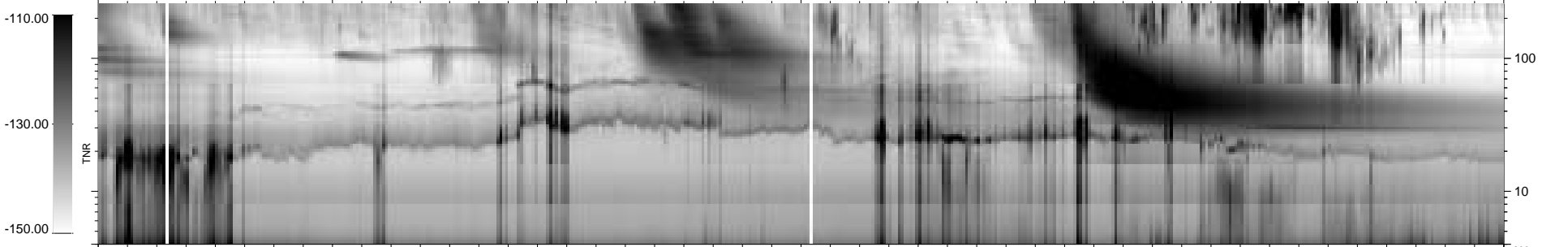
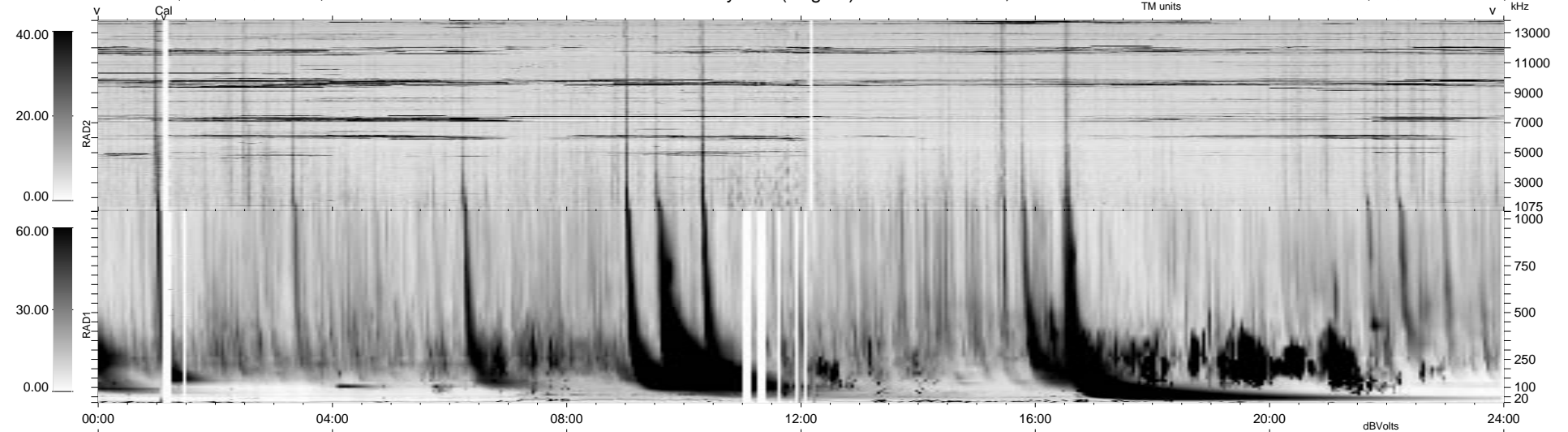


23 bad + 913 good MF/939MF projected (97%) - 3 missing MFs
 Avg interval = 180 secs
 Re = 73.09 (-14.32, -68.43, -21.31 GSE)

1.7d VMS-SunOS LZ version = v01
 DAILY Mon Sep 15, 2008
 Re = 67.45 (-9.80, -62.42, -23.58 GSE)

WIND/WAVES Summary Plot (Page 1) for 17-FEB-1999, DOY = 48



```

RAD2
Antenna Ey .....
Mode LIN(1) .....
SUM/SEP SEP .....
Toggle OFF .....

RAD1
Antenna Ex .....
Mode LIS(2,3) .....
SUM/SEP SUM .....
Toggle OFF .....

TNR
Antenna ExEy .....
Mode A-32 .....
Sweep ABCDE .....
  
```