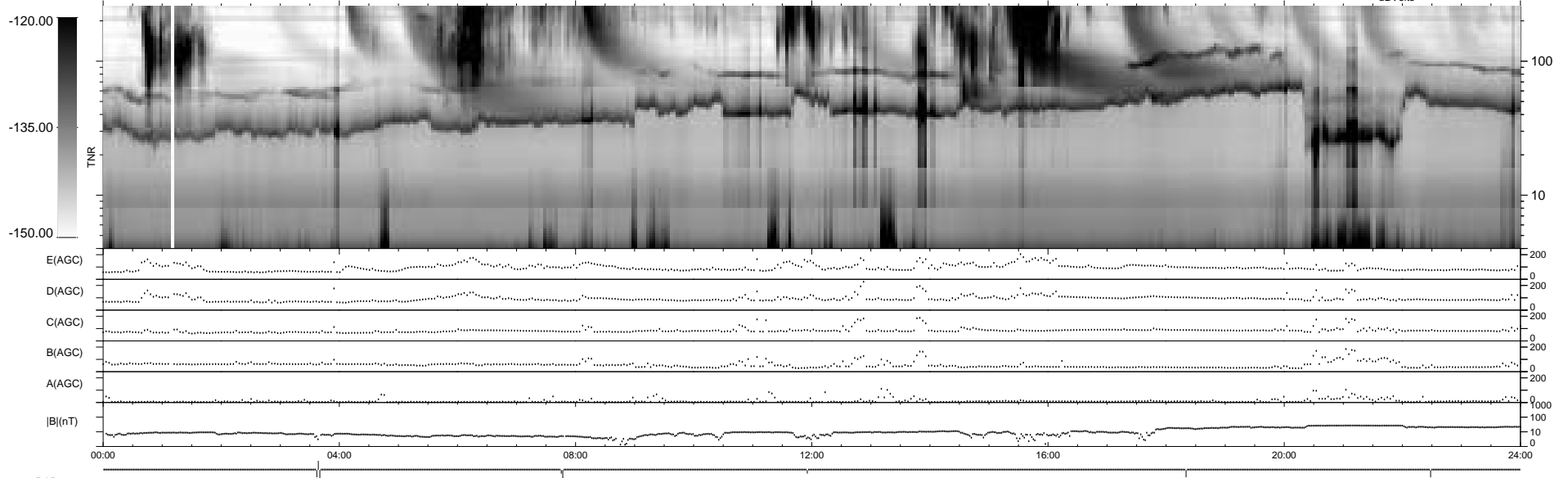
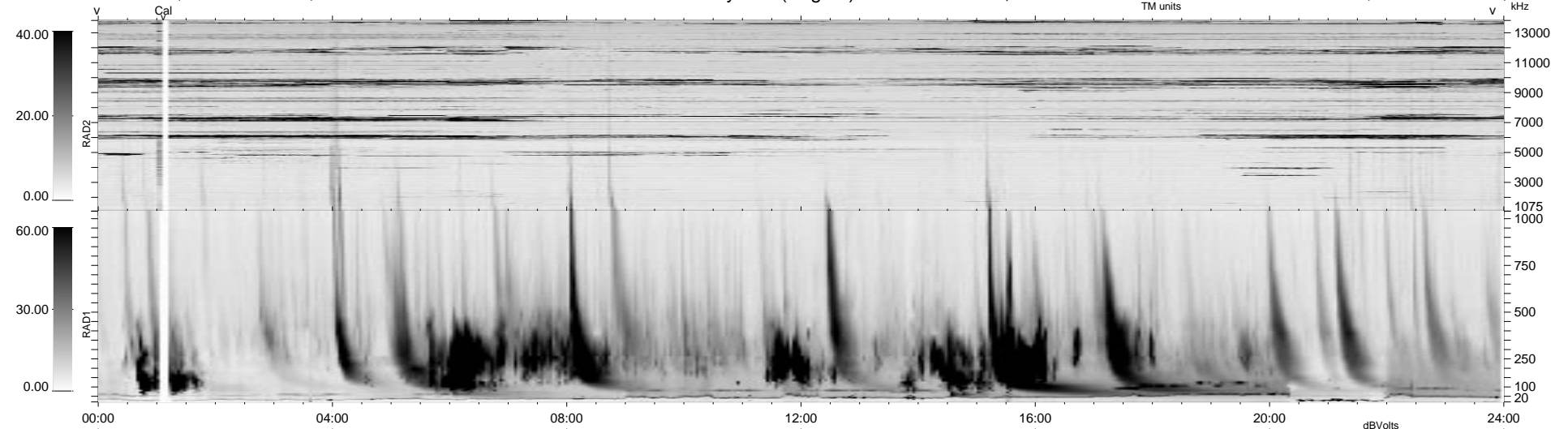


7 bad + 931 good MF/939MF projected (99%) - 1 missing MF
 Avg interval = 180 secs
 Re = 75.37 (-30.59, -68.87, 1.16 GSE)

1.7d VMS-SunOS LZ version = v01
 DAILY Mon Sep 15, 2008
 Re = 78.59 (-29.21, -72.90, -3.05 GSE)

WIND/WAVES Summary Plot (Page 1) for 11-FEB-1999, DOY = 42



RAD2
 Antenna Ey
 Mode LIN(1)
 SUM/SEP SEP
 Toggle OFF
 RAD1
 Antenna Ex
 Mode LIS(2,3)
 SUM/SEP SUM
 Toggle OFF
 TNR
 Antenna ExEy
 Mode A-32
 Sweep ABCDE