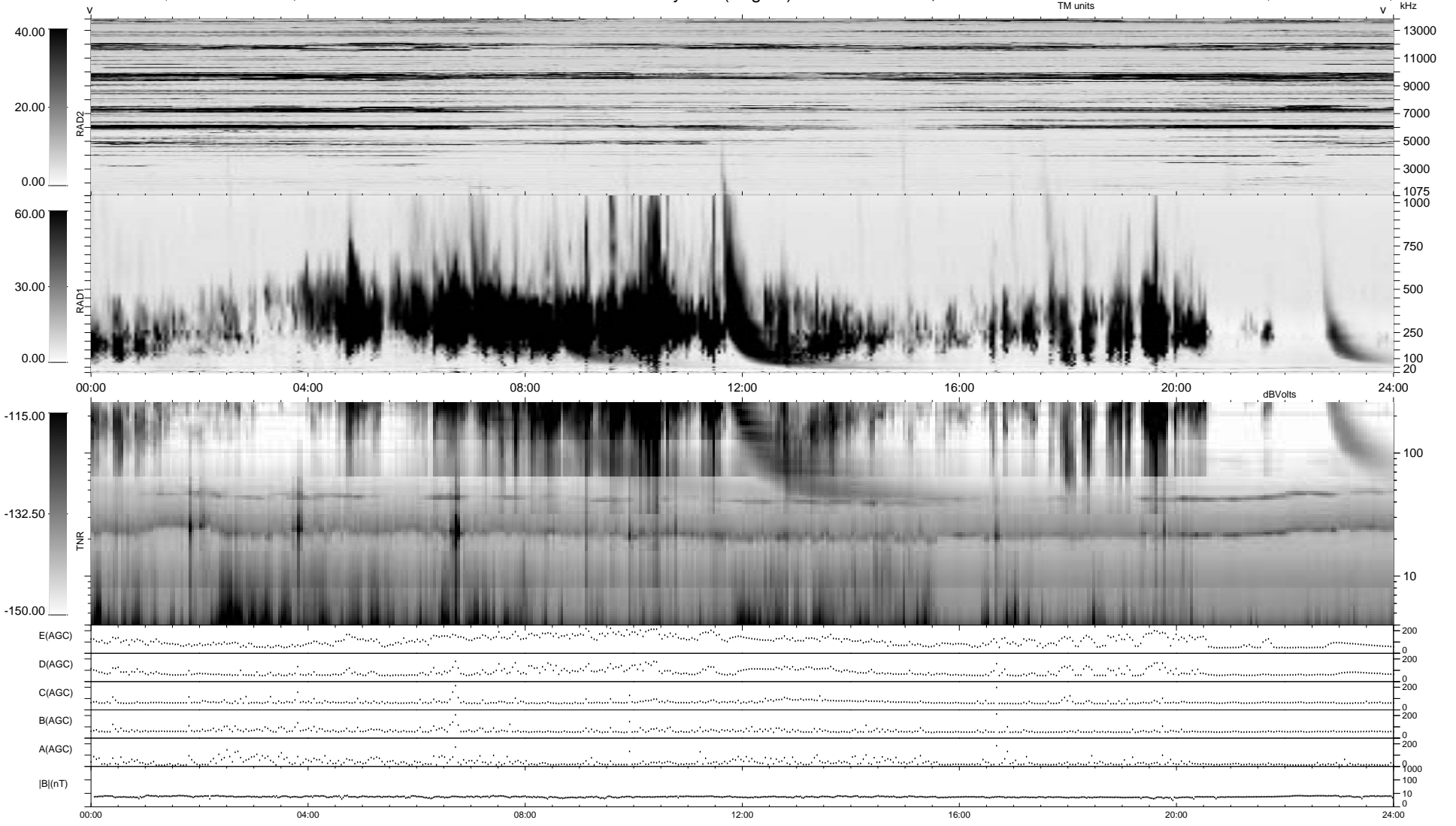


10 bad + 929 good MF/939MF projected (98%) - 0 missing MFs
 Avg interval = 180 secs
 Re = 55.28 (-30.09, -44.53, 12.93 GSE)

1.7d VMS-SunOS LZ version = v01
 DAILY Mon Sep 15, 2008
 Re = 63.90 (-31.28, -54.92, 9.39 GSE)

WIND/WAVES Summary Plot (Page 1) for 08-FEB-1999, DOY = 39



```

RAD2
Antenna Ey .....
Mode LIN(1) .....
SUM/SEP SEP .....
Toggle OFF .....

RAD1
Antenna Ex .....
Mode LIS(2,3) .....
SUM/SEP SUM .....
Toggle OFF .....

TNR
Antenna ExEy .....
Mode A-32 .....
Sweep ABCDE .....
  
```