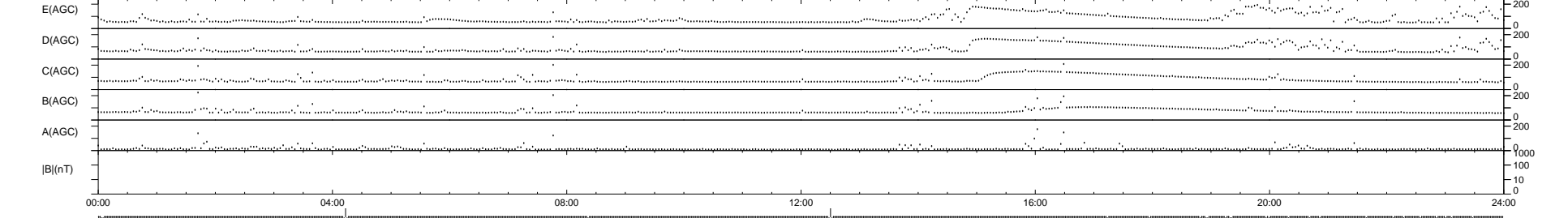
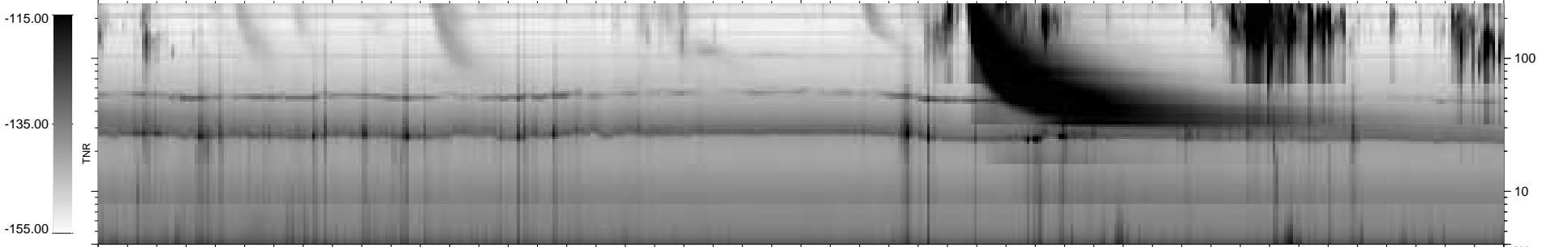
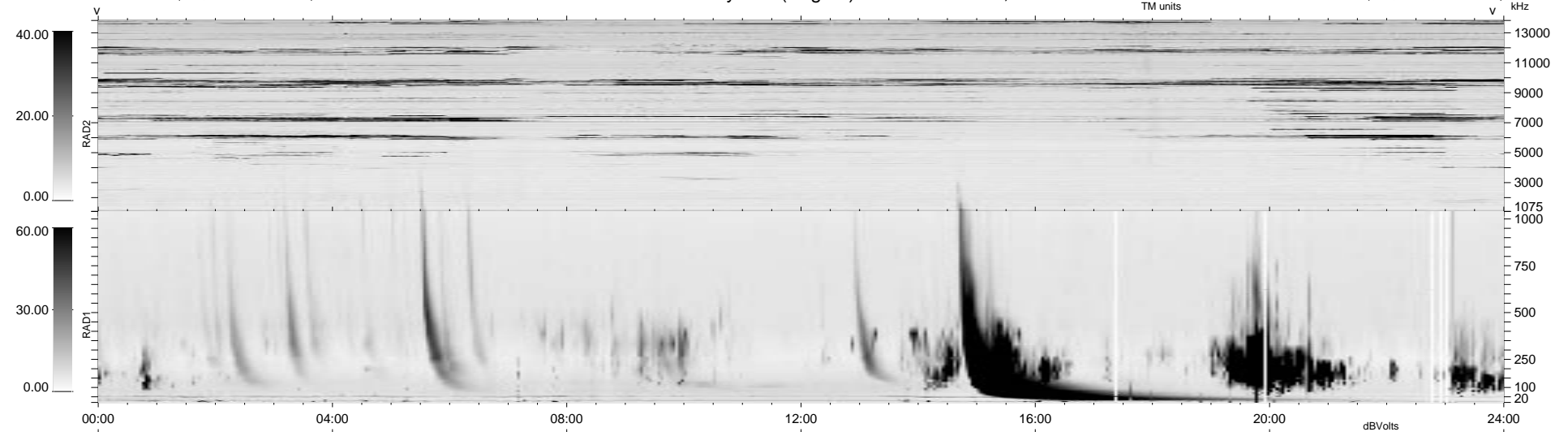


28 bad + 909 good MF/939MF projected (96%) - 2 missing MFs
 Avg interval = 180 secs
 Re = 76.88 (4.13, -74.92, -16.72 GSE)

1.7d VMS-SunOS LZ version = v01

WIND/WAVES Summary Plot (Page 1) for 29-JAN-1999, DOY = 29

DAILY Mon Sep 15, 2008
 Re = 73.49 (6.67, -70.46, -19.82 GSE)



RAD2
 Antenna Ey
 Mode LIN(1)
 SUM/SEP SEP
 Toggle OFF

RAD1
 Antenna Ex
 Mode LIS(2,3)
 SUM/SEP SUM
 Toggle OFF

TNR
 Antenna ExEy
 Mode A-32
 Sweep ABCDE