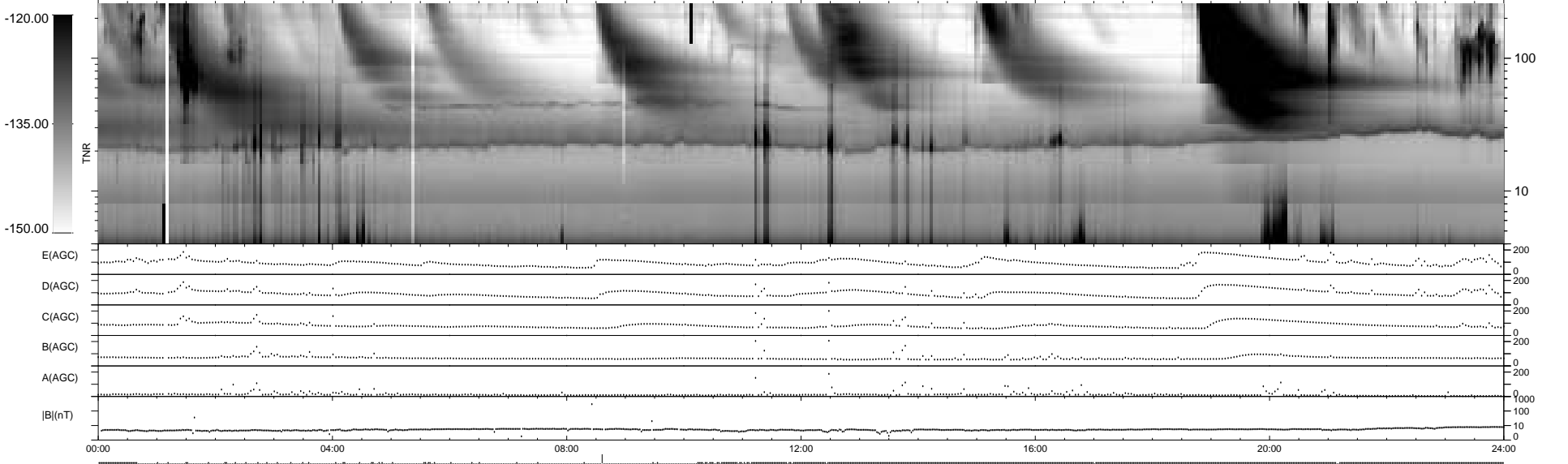
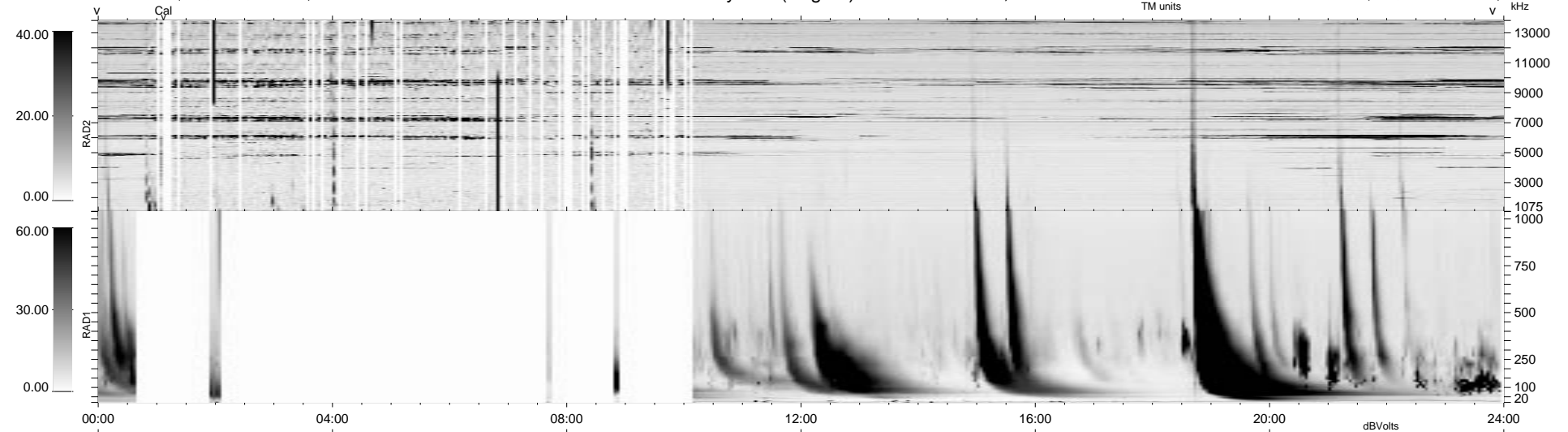


351 bad + 597 good MF/939MF projected (62%) - 1 missing MF  
 Avg interval = 180 secs  
 Re = 78.15 (-3.21, -77.91, -5.20 GSE)

1.7d VMS-SunOS LZ version = v01

WIND/WAVES Summary Plot (Page 1) for 26-JAN-1999, DOY = 26

DAILY Mon Sep 15, 2008  
 Re = 79.18 (-0.82, -78.63, -9.27 GSE)



RAD2  
 Antenna Ey .....  
 Mode LIN(1) .....  
 SUM/SEP SEP .....  
 Toggle OFF .....  
 RAD1  
 Antenna Ex .....  
 Mode LIS(2,3) .....  
 SUM/SEP SUM .....  
 Toggle OFF .....  
 TNR  
 Antenna ExEy .....  
 Mode A-32 .....  
 Sweep ABCDE .....