

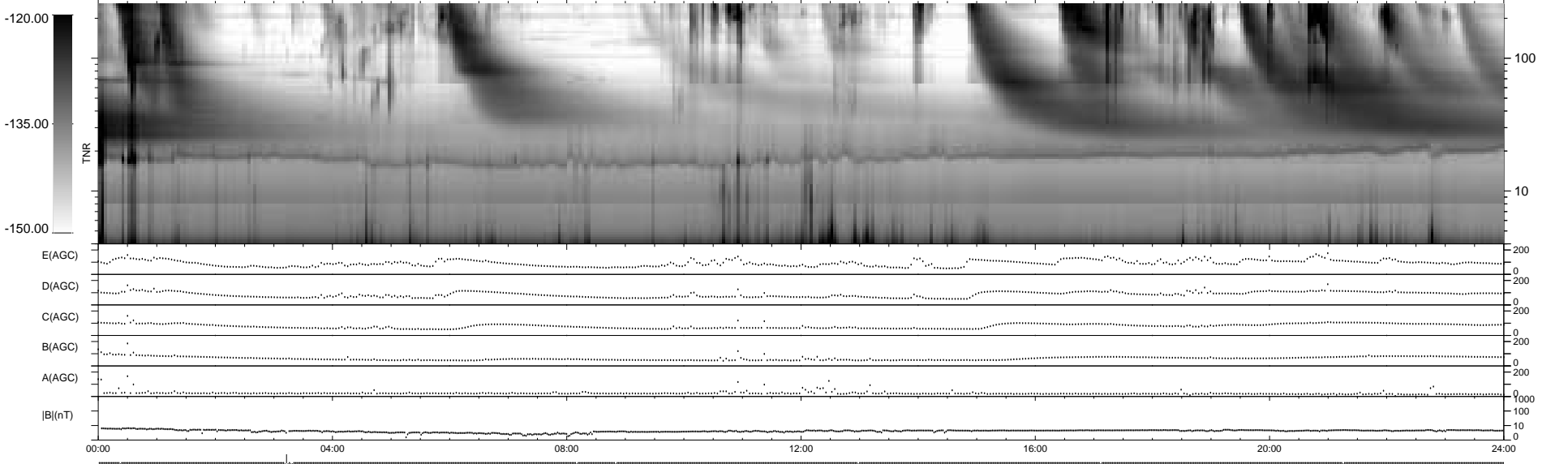
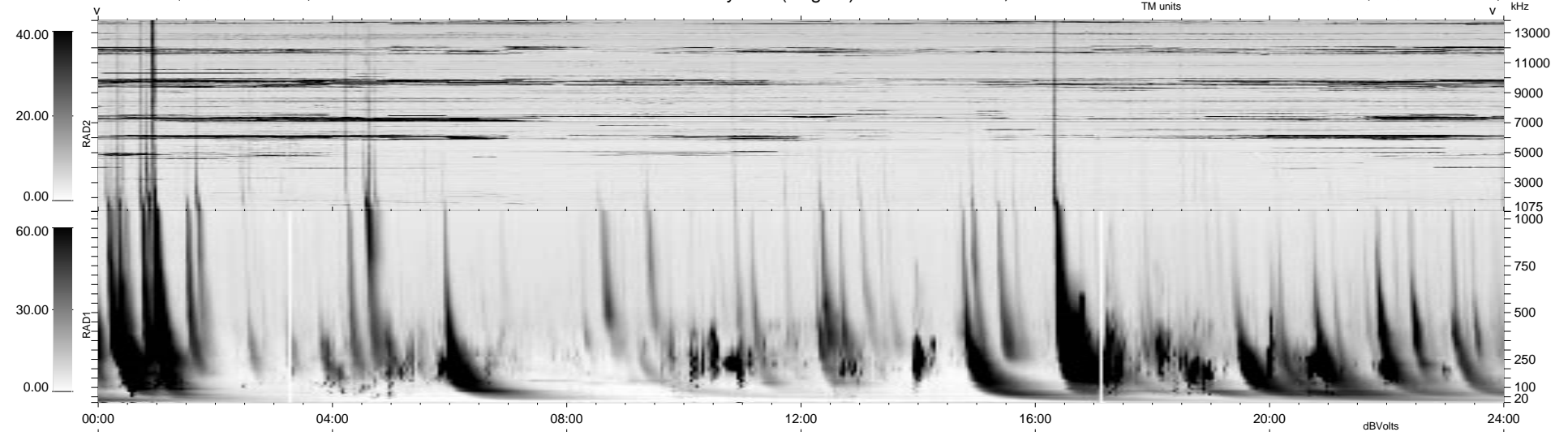
10 bad + 928 good MF/939MF projected (98%) - 1 missing MF
 Avg interval = 180 secs
 Re = - 75.65 (-5.58, -75.44, -0.98 GSE)

1.7d VMS-SunOS

LZ version = v01

WIND/WAVES Summary Plot (Page 1) for 25-JAN-1999, DOY = 25

DAILY Mon Sep 15, 2008
 Re = 78.14 (-3.23, -77.90, -5.17 GSE)



RAD2
 Antenna Ey
 Mode LIN(1)
 SUM/SEP SEP
 Toggle OFF

RAD1
 Antenna Ex
 Mode LIS(2,3)
 SUM/SEP SUM
 Toggle OFF

TNR
 Antenna ExEy
 Mode A-32
 Sweep ABCDE