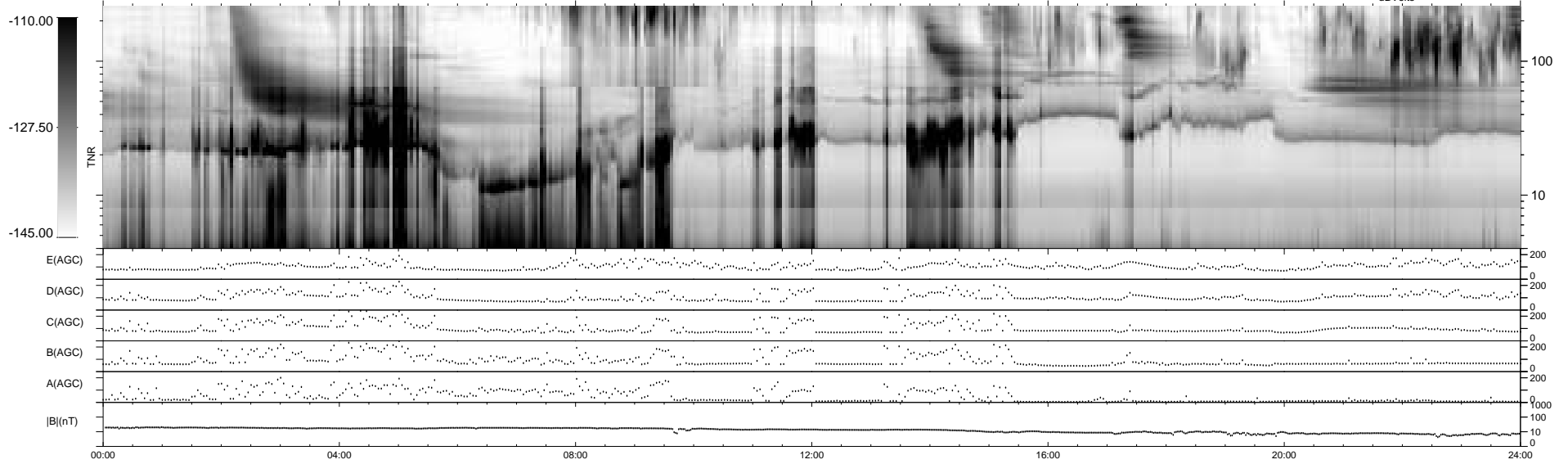
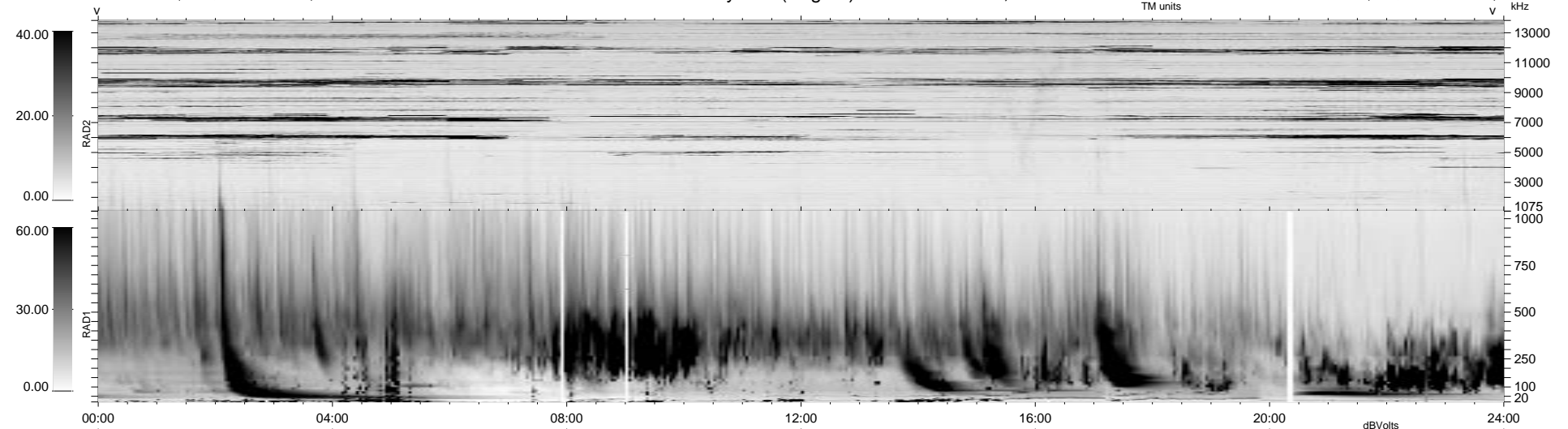


22 bad + 918 good MF/940MF projected (97%) - 0 missing MFs
 Avg interval = 180 secs
 Re = 65.82 (-10.23, -64.60, 7.42 GSE)

1.7d VMS-SunOS LZ version = v01

WIND/WAVES Summary Plot (Page 1) for 23-JAN-1999, DOY = 23

DAILY Mon Sep 15, 2008
 Re = 71.56 (-7.95, -71.04, 3.30 GSE)



RAD2
 Antenna Ey
 Mode LIN(1)
 SUM/SEP SEP
 Toggle OFF

RAD1
 Antenna Ex
 Mode LIS(2,3)
 SUM/SEP SUM
 Toggle OFF

TNR
 Antenna ExEy
 Mode A-32
 Sweep ABCDE