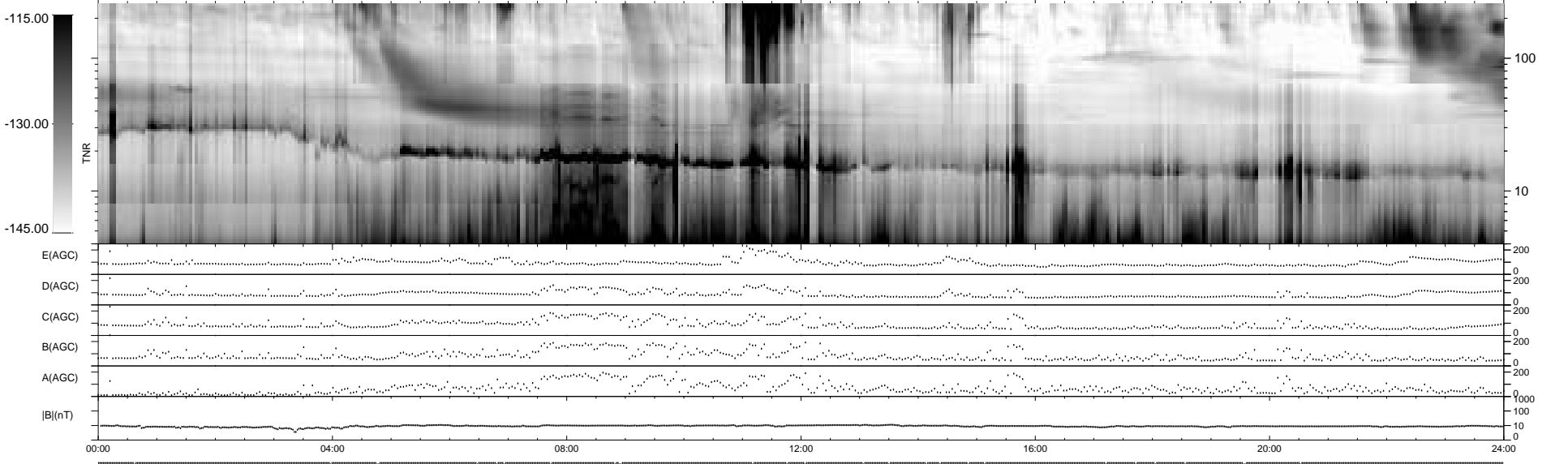
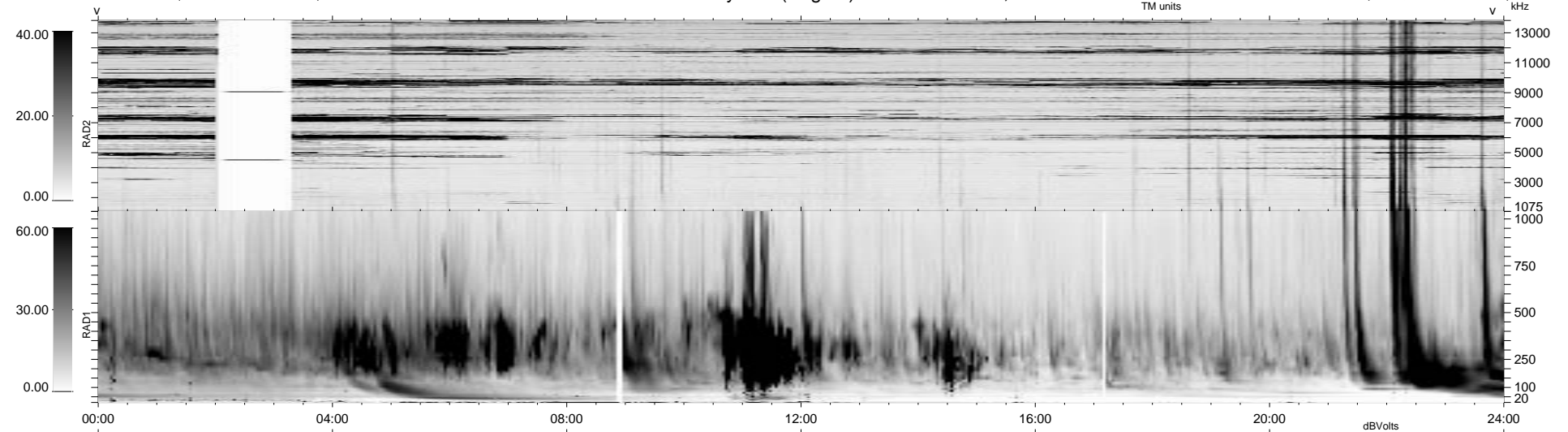


27 bad + 912 good MF/939MF projected (97%) - 0 missing MFs
 Avg interval = 180 secs
 Re = - 47.89 (-14.22, -43.41, 14.38 GSE)

1.7d VMS-SunOS LZ version = v01
 DAILY Mon Sep 15, 2008
 Re = 58.01 (-12.41, -55.54, 11.27 GSE)

WIND/WAVES Summary Plot (Page 1) for 21-JAN-1999, DOY = 21



RAD2
 Antenna Ey LIS(8,11) LIN(1)
 Mode LIN(1)
 SUM/SEP SEP
 Toggle OFF
 RAD1
 Antenna Ex
 Mode LIS(2,3)
 SUM/SEP SUM
 Toggle OFF
 TNR
 Antenna ExEy
 Mode A-32
 Sweep ABCDE