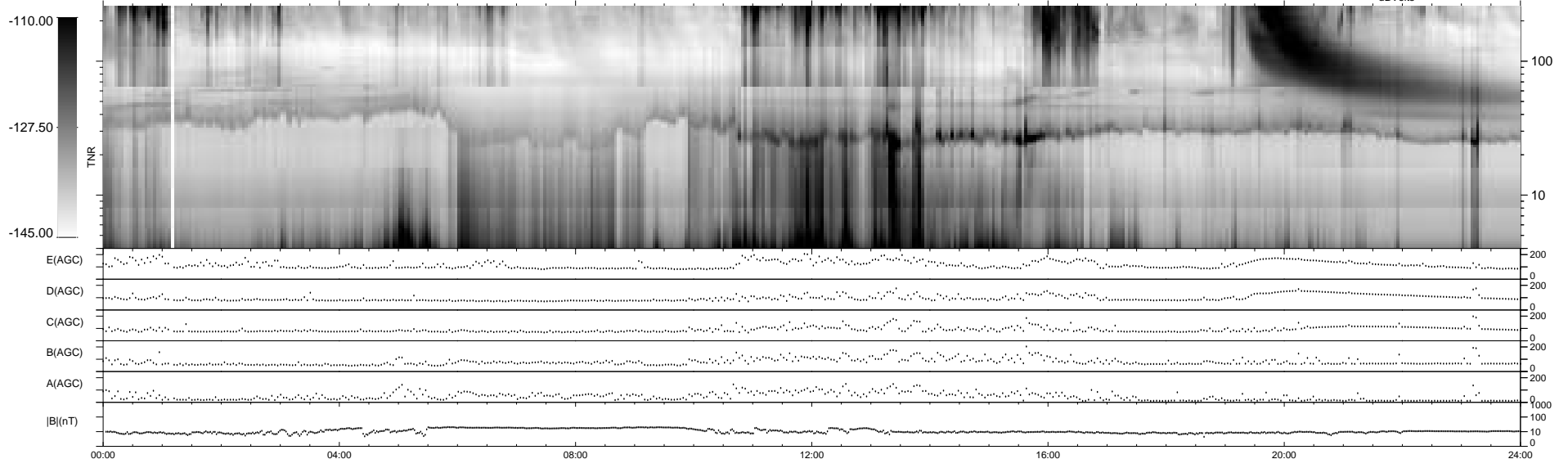
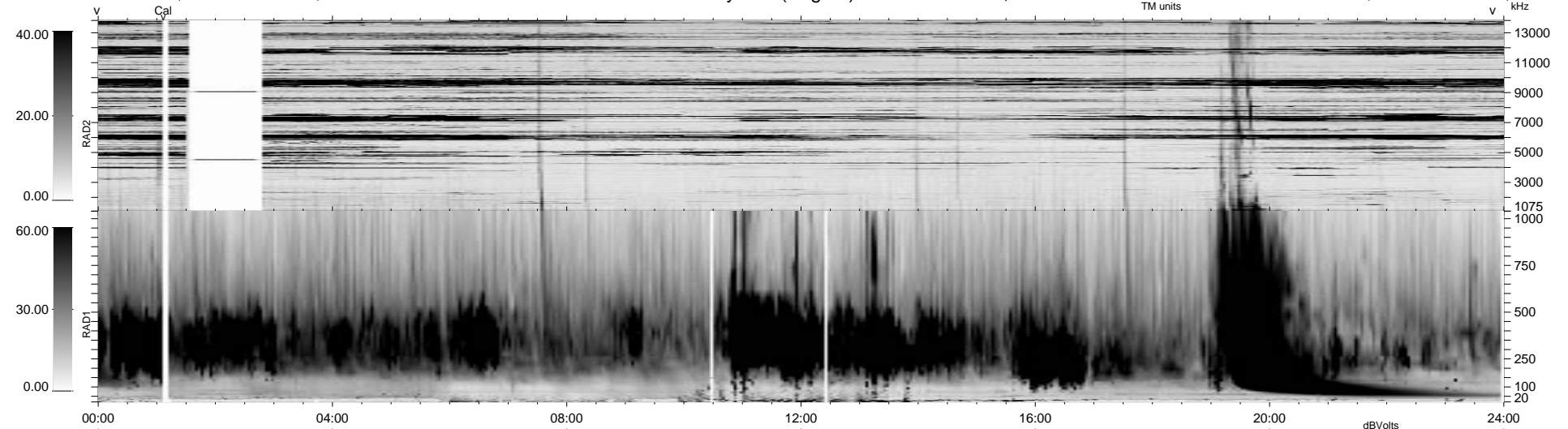


38 bad + 901 good MF/939MF projected (95%) - 0 missing MFs
 Avg interval = 180 secs
 Re = 34.40 (-14.95, -26.61, 15.86 GSE)

1.7d VMS-SunOS LZ version = v01
 DAILY Mon Sep 15, 2008
 Re = 47.81 (-14.23, -43.31, 14.40 GSE)

WIND/WAVES Summary Plot (Page 1) for 20-JAN-1999, DOY = 20



```

RAD2
Antenna Ey ..... LIS(8,1) ..... LIN(1) .....
Mode LIN(1) ..... LIS(8,1) ..... LIN(1) .....
SUM/SEP SEP .....
Toggle OFF .....

RAD1
Antenna Ex .....
Mode LIS(2,3) .....
SUM/SEP SUM .....
Toggle OFF .....

TNR
Antenna ExEy .....
Mode A-32 .....
Sweep ABCDE .....
  
```