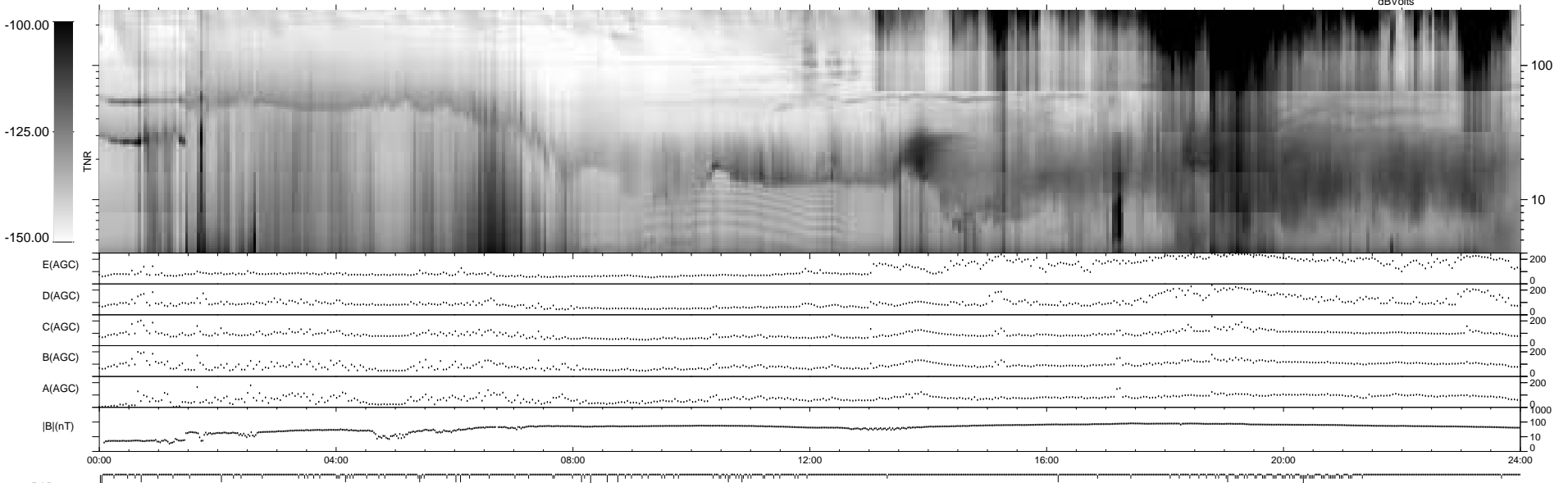
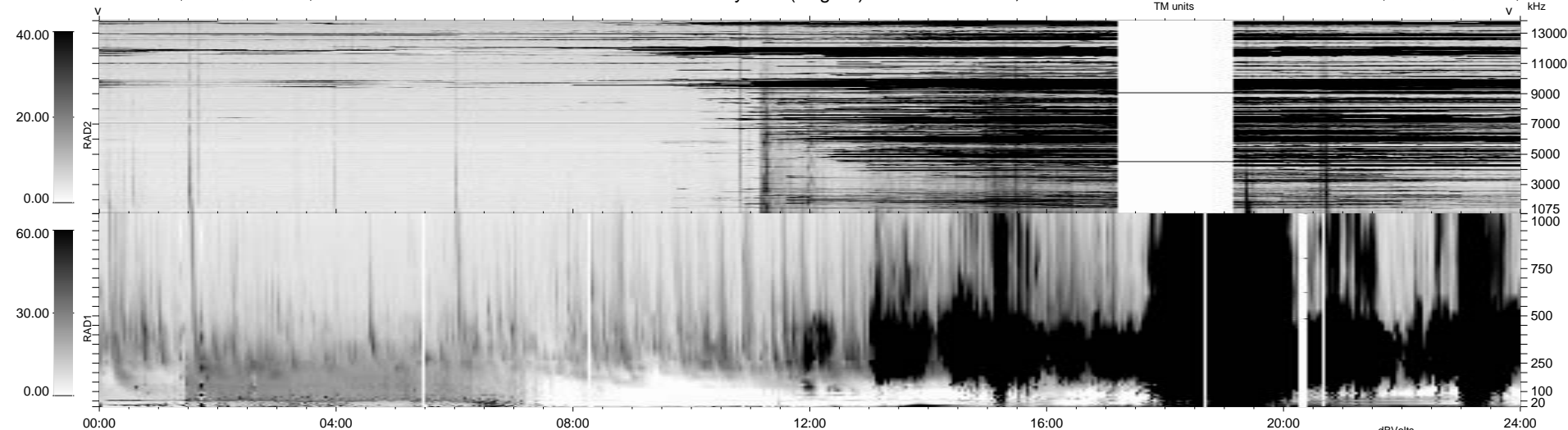


132 bad + 807 good MF/939MF projected (85%) - 0 missing MFs
 Avg interval = 180 secs
 Re = 17.89 (12.20, 2.40, -12.86 GSE)

1.7d VMS-SunOS LZ version = v01
 DAILY Mon Sep 15, 2008
 Re = 15.94 (-10.92, -1.86, 11.47 GSE)

WIND/WAVES Summary Plot (Page 1) for 18-JAN-1999, DOY = 18



```

RAD2
Antenna Ey .....
Mode LIN(1) .....
SUM/SEP SEP .....
Toggle OFF .....
RAD1
Antenna Ex .....
Mode LIS(2,3) .....
SUM/SEP SUM .....
Toggle OFF .....
TNR
Antenna ExEy .....
Mode A-32 .....
Sweep ABCDE .....
  
```