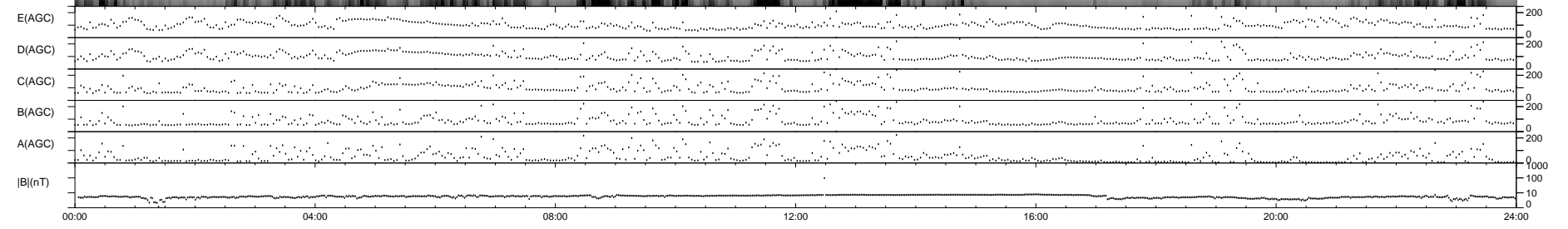
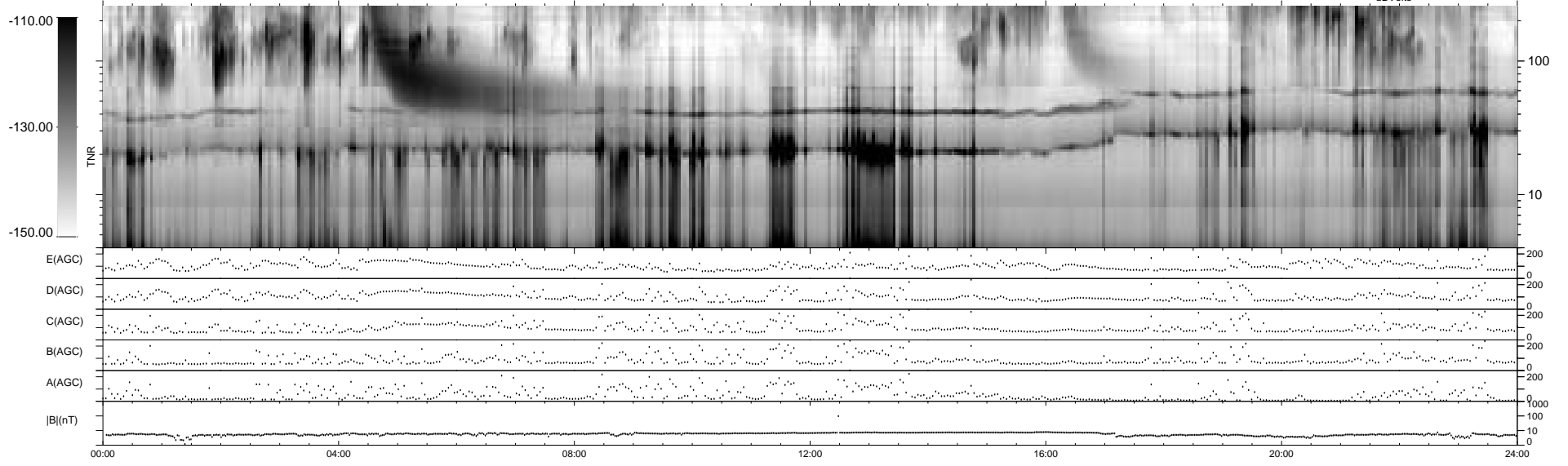
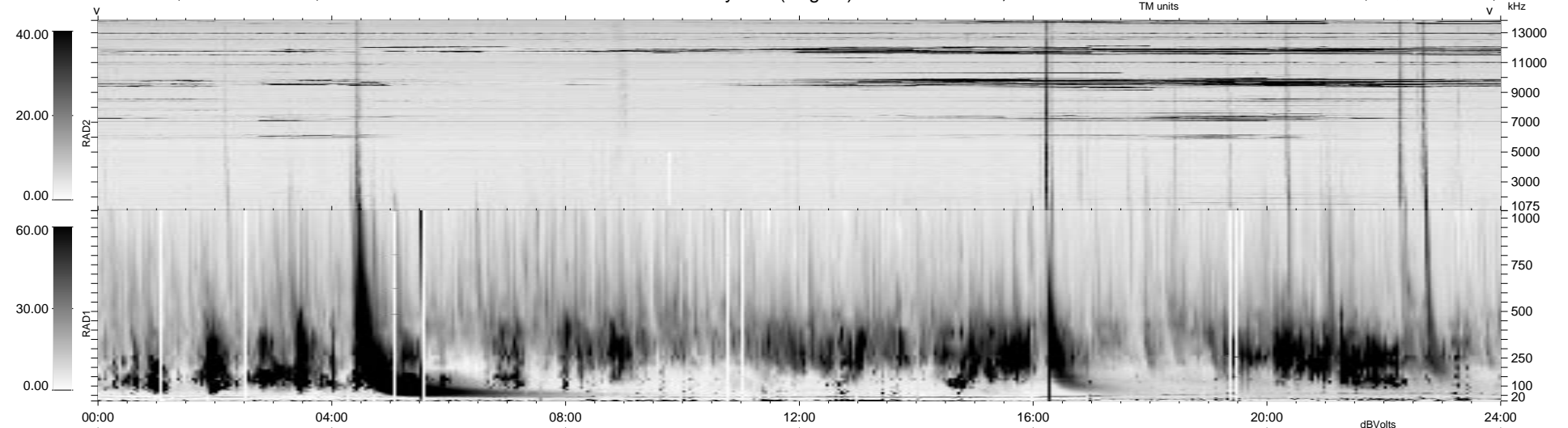


159 bad + 790 good MF/939MF projected (83%) - 0 missing MFs  
 Avg interval = 180 secs  
 Re = 35.75 (22.08, -17.68, -21.86 GSE)

1.7d VMS-SunOS LZ version = v01  
 DAILY Mon Sep 15, 2008  
 Re = 18.03 (12.32, 2.25, -12.97 GSE)

### WIND/WAVES Summary Plot (Page 1) for 17-JAN-1999, DOY = 17



RAD2  
 Antenna Ey .....  
 Mode LIN(1) .....  
 SUM/SEP SEP .....  
 Toggle OFF .....  
 RAD1  
 Antenna Ex .....  
 Mode LIS(2,3) .....  
 SUM/SEP SUM .....  
 Toggle OFF .....  
 TNR  
 Antenna ExEy .....  
 Mode A-32 .....  
 Sweep ABCDE .....