

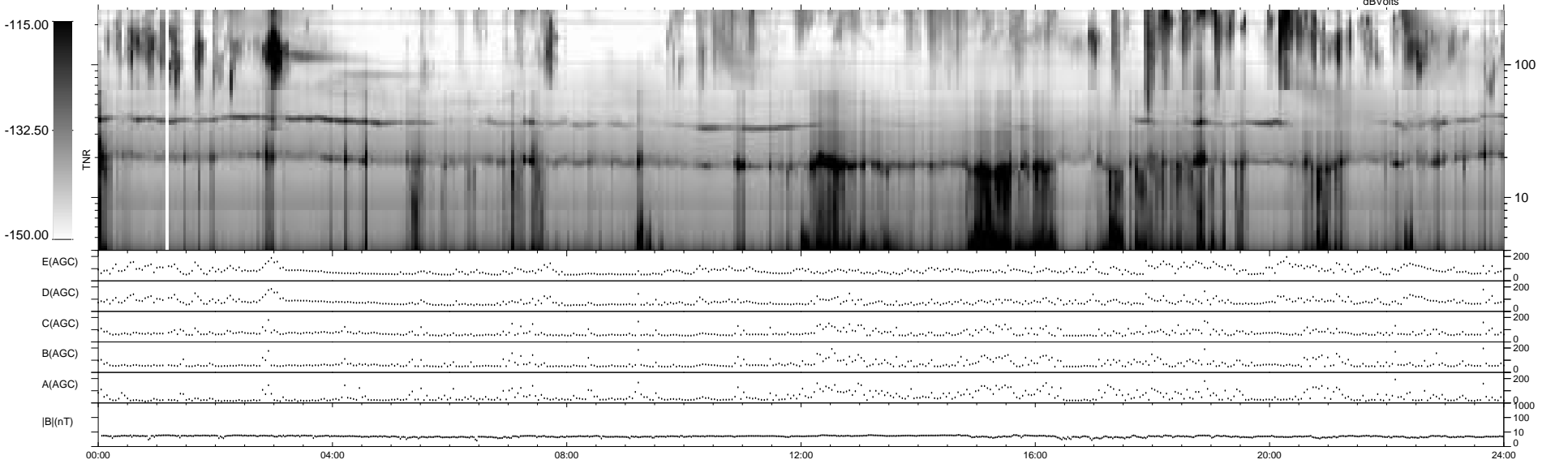
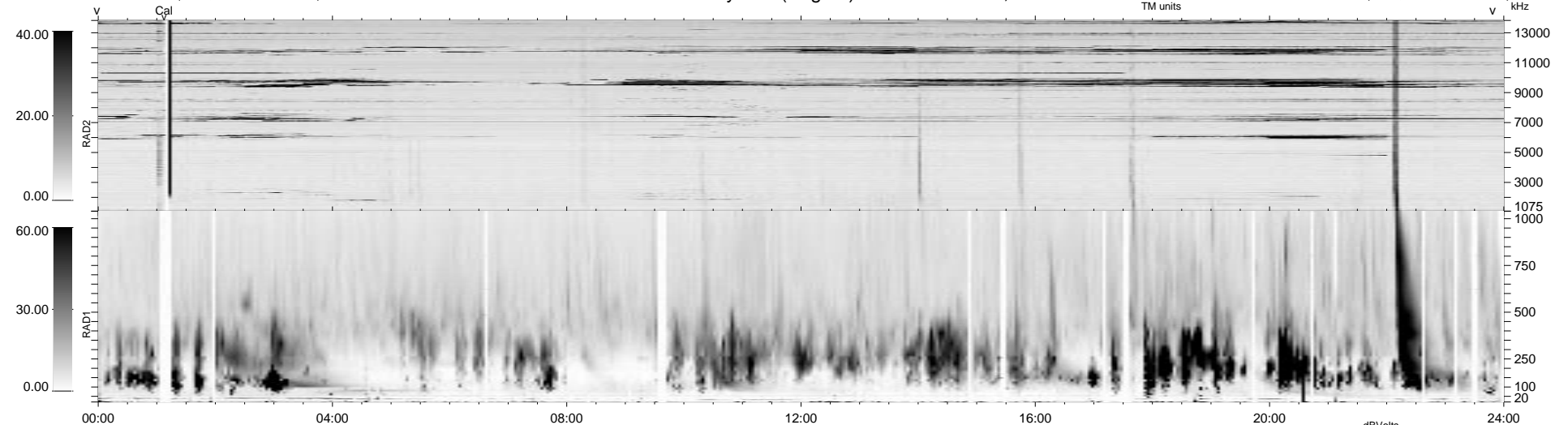
208 bad + 731 good MF/939MF projected (77%) - 0 missing MFs  
 Avg interval = 180 secs  
 Re = 48.86 (26.13, -33.37, -24.31 GSE)

1.7d VMS-SunOS

LZ version = v01

WIND/WAVES Summary Plot (Page 1) for 16-JAN-1999, DOY = 16

DAILY Mon Sep 15, 2008  
 Re = 35.85 (22.12, -17.80, -21.89 GSE)



RAD2  
 Antenna Ey  
 Mode LIN(1)  
 SUM/SEP SEP  
 Toggle OFF

RAD1  
 Antenna Ex  
 Mode LIS(2,3)  
 SUM/SEP SUM  
 Toggle OFF

TNR  
 Antenna ExEy  
 Mode A-32  
 Sweep ABCDE