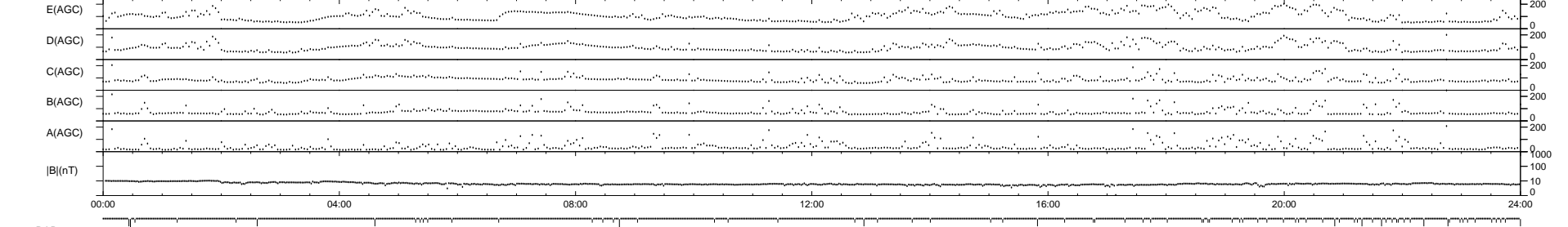
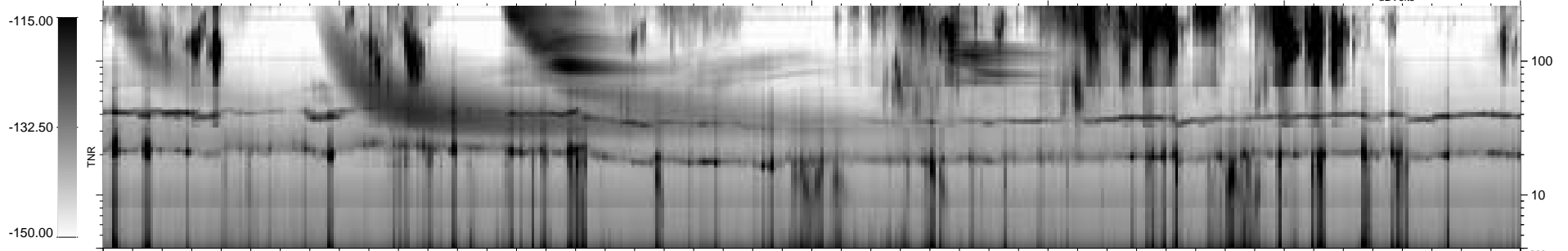
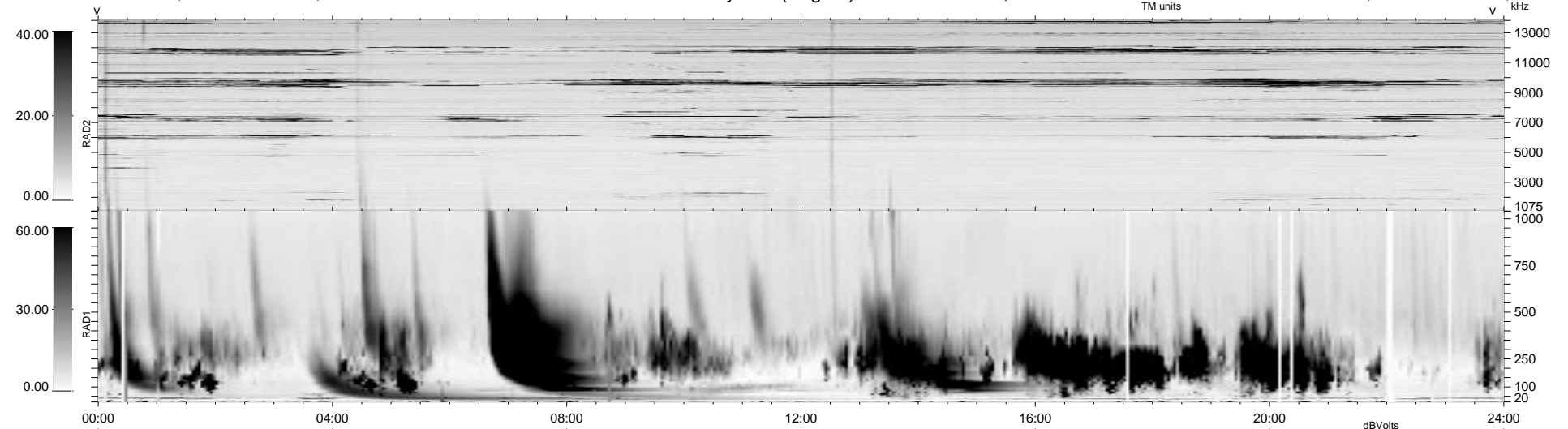


75 bad + 865 good MF/940MF projected (92%) - 0 missing MFs
 Avg interval = 180 secs
 Re = - 58.72 (27.99, -45.60, -24.18 GSE)

1.7d VMS-SunOS LZ version = v01
 DAILY Mon Sep 15, 2008
 Re = 48.94 (26.15, -33.46, -24.32 GSE)

WIND/WAVES Summary Plot (Page 1) for 15-JAN-1999, DOY = 15



```

RAD2
Antenna Ey .....
Mode LIN(1) .....
SUM/SEP SEP .....
Toggle OFF .....

RAD1
Antenna Ex .....
Mode LIS(2,3) .....
SUM/SEP SUM .....
Toggle OFF .....

TNR
Antenna ExEy .....
Mode A-32 .....
Sweep ABCDE .....
  
```