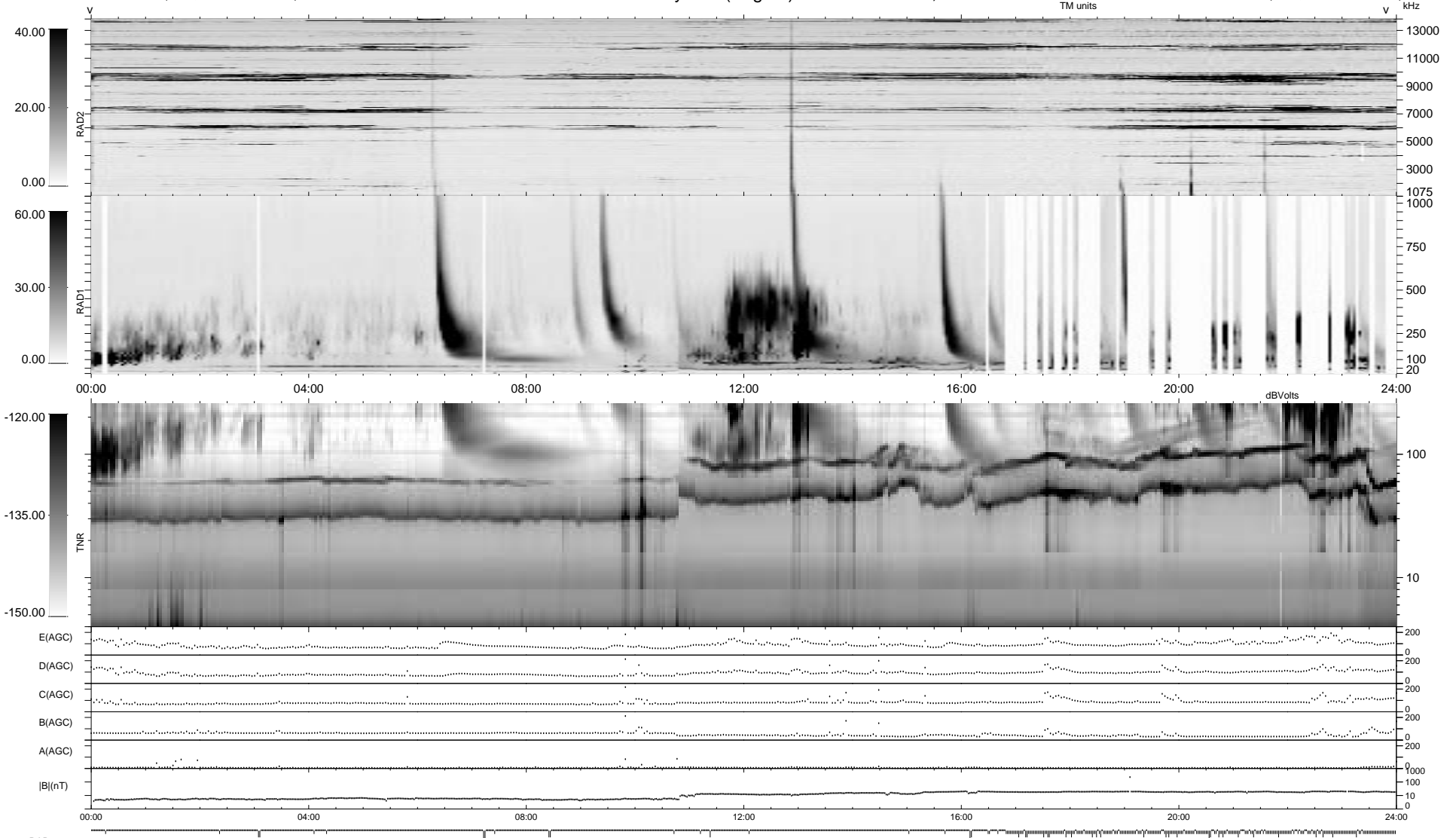


266 bad + 673 good MF/939MF projected (71%) - 0 missing MFs
 Avg interval = 180 secs
 Re = 71.45 (28.54, -62.40, -19.94 GSE)

1.7d VMS-SunOS LZ version = v01
 DAILY Mon Sep 15, 2008
 Re = 66.16 (28.67, -55.20, -22.55 GSE)

WIND/WAVES Summary Plot (Page 1) for 13-JAN-1999, DOY = 13



RAD2
 Antenna Ey
 Mode LIN(1)
 SUM/SEP SEP
 Toggle OFF
 RAD1
 Antenna Ex
 Mode LIS(2,3)
 SUM/SEP SUM
 Toggle OFF
 TNR
 Antenna ExEy
 Mode A-32
 Sweep ABCDE