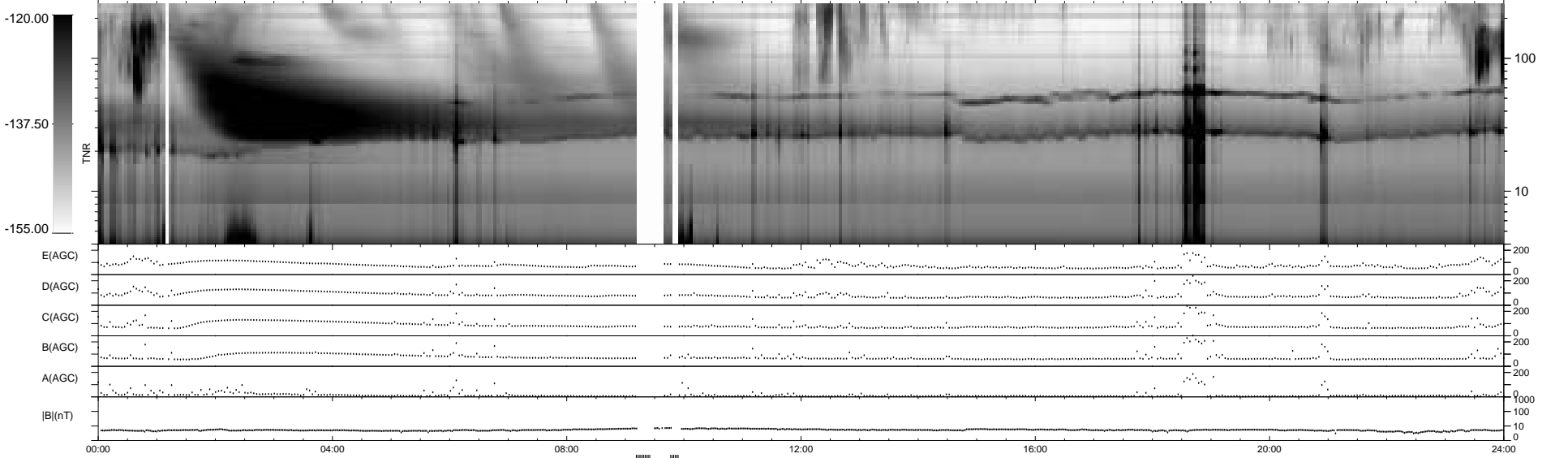
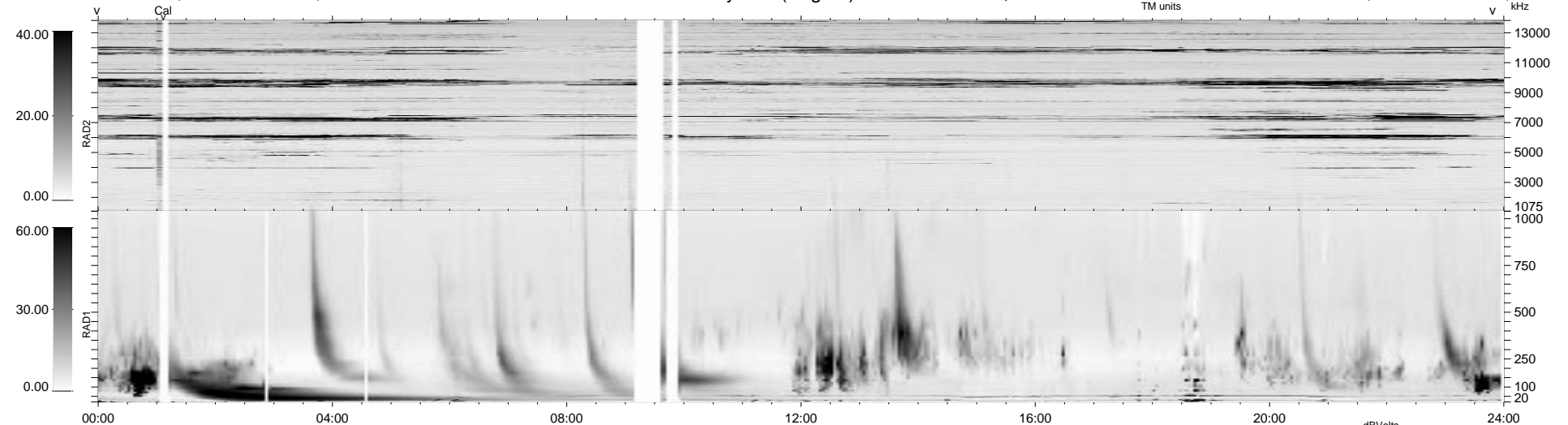


35 bad + 888 good MF/939MF projected (94%) - 16 missing MFs
 Avg interval = 180 secs
 Re = 74.94 (27.78, -67.61, -16.55 GSE)

1.7d VMS-SunOS LZ version = v01
 DAILY Mon Sep 15, 2008
 Re = 71.48 (28.54, -62.44, -19.92 GSE)

WIND/WAVES Summary Plot (Page 1) for 12-JAN-1999, DOY = 12



```

RAD2
Antenna Ey .....
Mode LIN(1) .....
SUM/SEP SEP .....
Toggle OFF .....

RAD1
Antenna Ex .....
Mode LIS(2,3) .....
SUM/SEP SUM .....
Toggle OFF .....

TNR
Antenna ExEy .....
Mode A-32 .....
Sweep ABCDE .....
  
```