

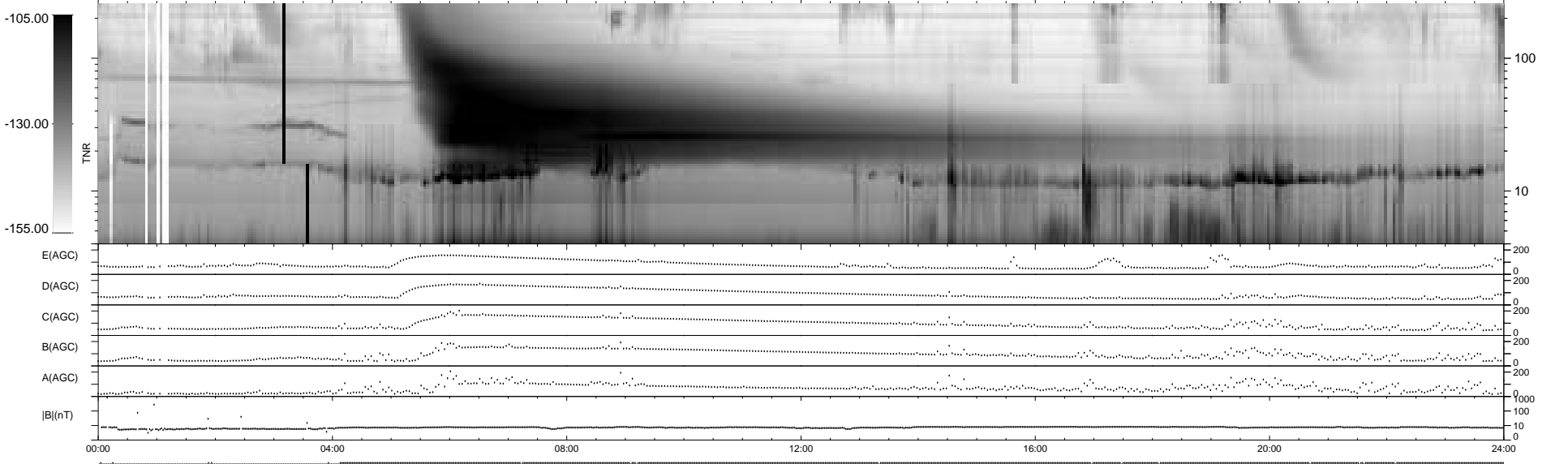
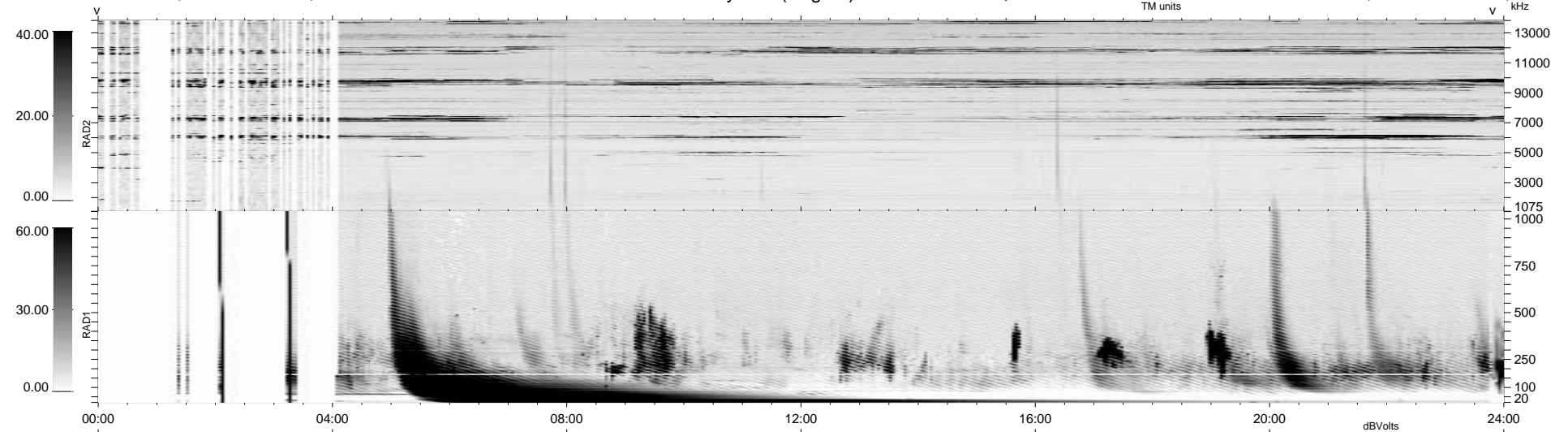
167 bad + 772 good MF/939MF projected (82%) - 0 missing MFs
 Avg interval = 180 secs
 Re = 76.66 (24.36, -72.26, -7.92 GSE)

1.7d VMS-SunOS

LZ version = v01

WIND/WAVES Summary Plot (Page 1) for 10-JAN-1999, DOY = 10

DAILY Mon Sep 15, 2008
 Re = 76.67 (26.40, -70.90, -12.47 GSE)



RAD2
 Antenna Ey
 Mode LIN(1)
 SUM/SEP SEP
 Toggle OFF
 RAD1
 Antenna
 Mode
 SUM/SEP
 Toggle
 TNR
 Antenna ExEy
 Mode A-32
 Sweep ABCDE
 US(2,8) SUM