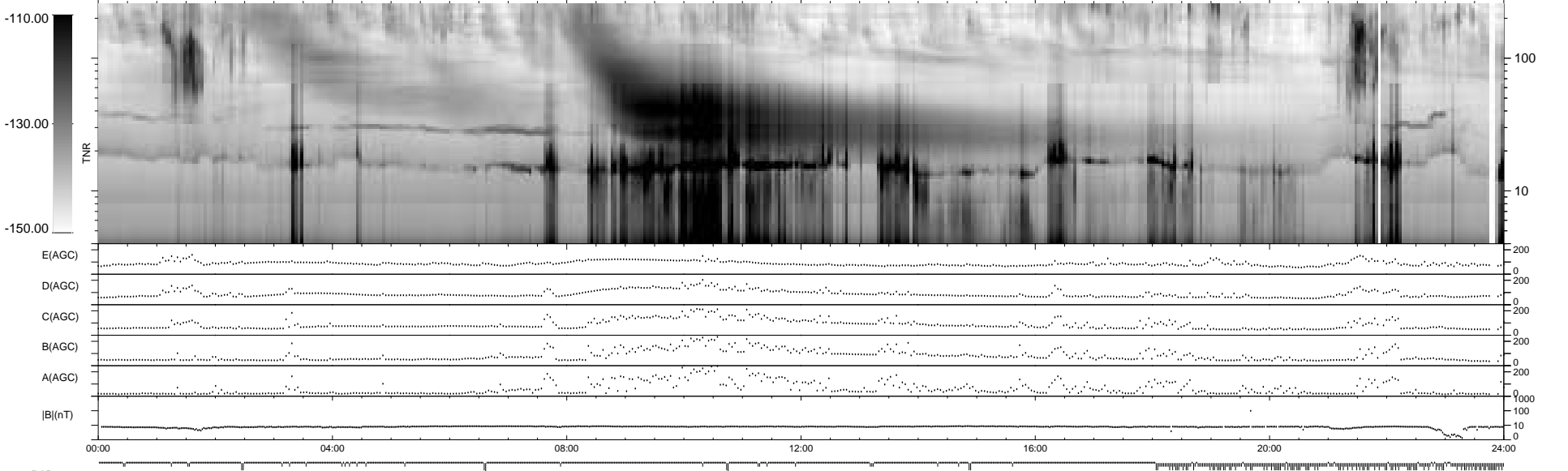
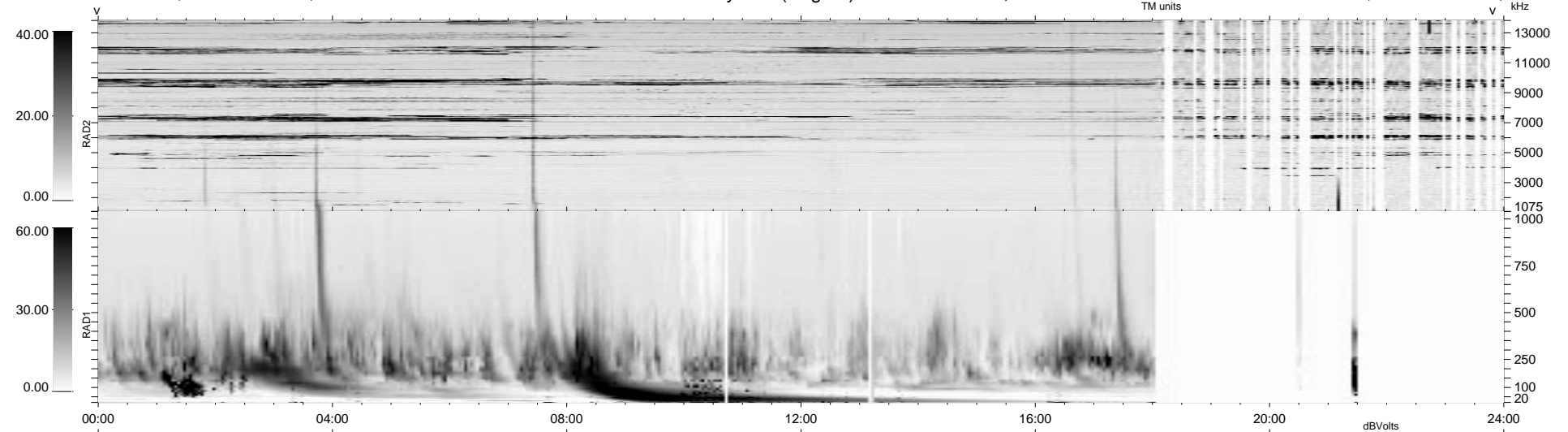


254 bad + 695 good MF/939MF projected (72%) - 0 missing MFs
 Avg interval = 180 secs
 Re = - 74.99 (21.55, -71.76, -3.03 GSE)

1.7d VMS-SunOS LZ version = v01
 DAILY Mon Sep 15, 2008
 Re = 76.66 (24.34, -72.26, -7.89 GSE)

WIND/WAVES Summary Plot (Page 1) for 09-JAN-1999, DOY = 9



RAD2
 Antenna Ey
 Mode LIN(1)
 SUM/SEP SEP
 Toggle OFF
 RAD1
 Antenna Ex
 Mode LIS(2,3)
 SUM/SEP SUM
 Toggle OFF
 TNR
 Antenna ExEy
 Mode A-32
 Sweep ABCDE