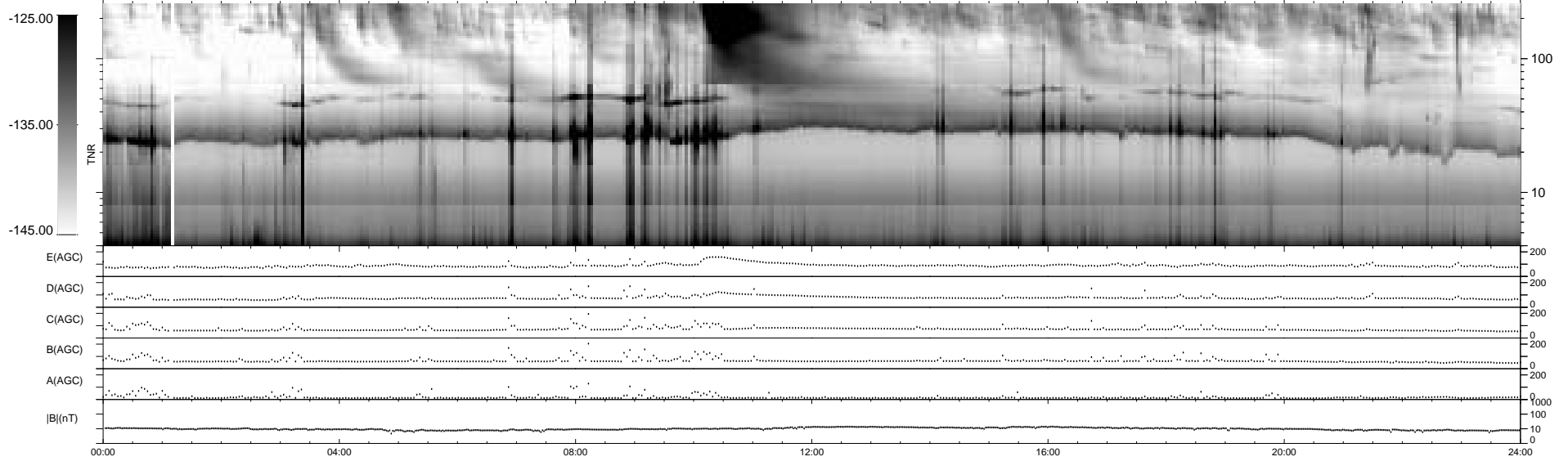
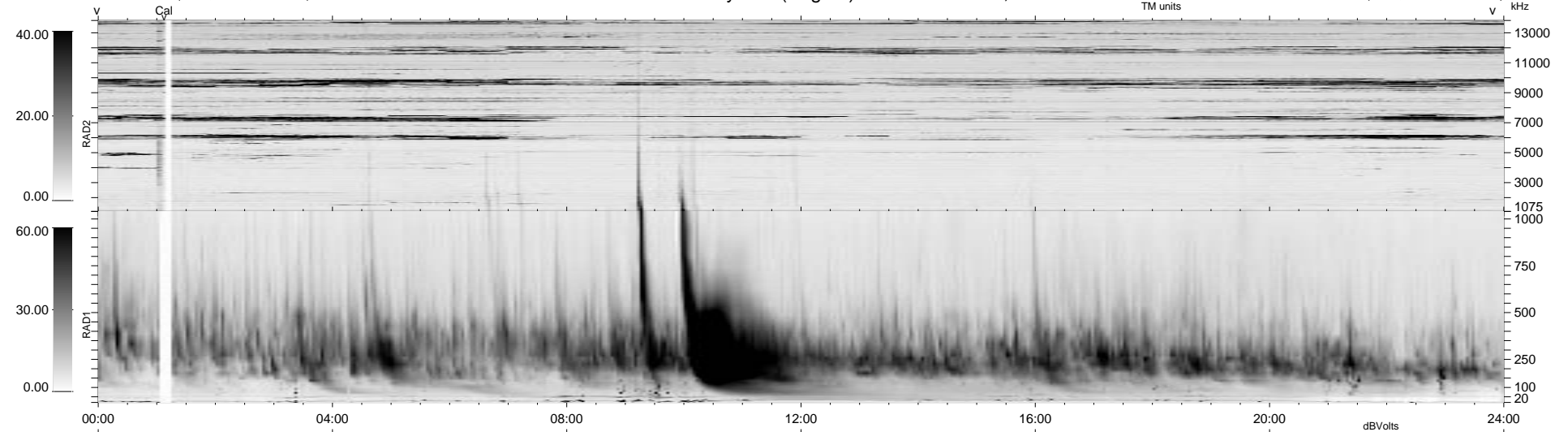


11 bad + 929 good MF/940MF projected (98%) - 0 missing MFs
 Avg interval = 180 secs
 Re = 71.66 (18.00, -69.33, 1.98 GSE)

1.7d VMS-SunOS LZ version = v02

WIND/WAVES Summary Plot (Page 1) for 08-JAN-1999, DOY = 8

DAILY Mon Sep 15, 2008
 Re = 74.97 (21.53, -71.75, -2.99 GSE)



```

RAD2
Antenna Ey
Mode LIN(1)
SUM/SEP SEP
Toggle OFF

RAD1
Antenna Ex
Mode LIS(2,3)
SUM/SEP SUM
Toggle OFF

TNR
Antenna ExEy
Mode A-32
Sweep ABCDE
  
```