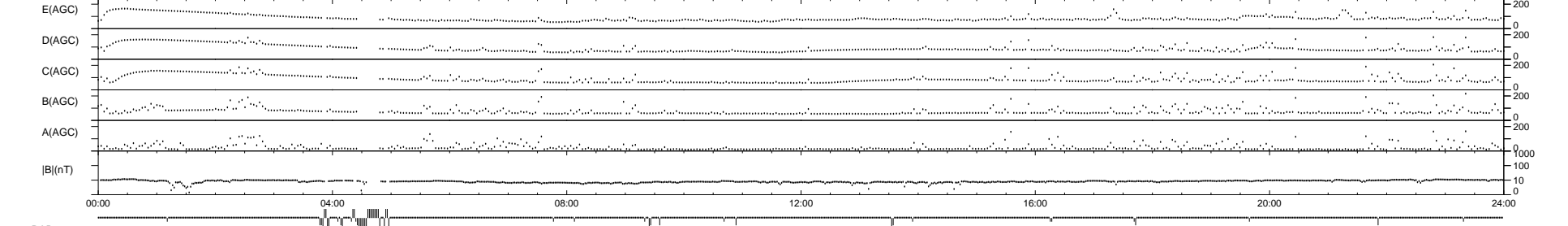
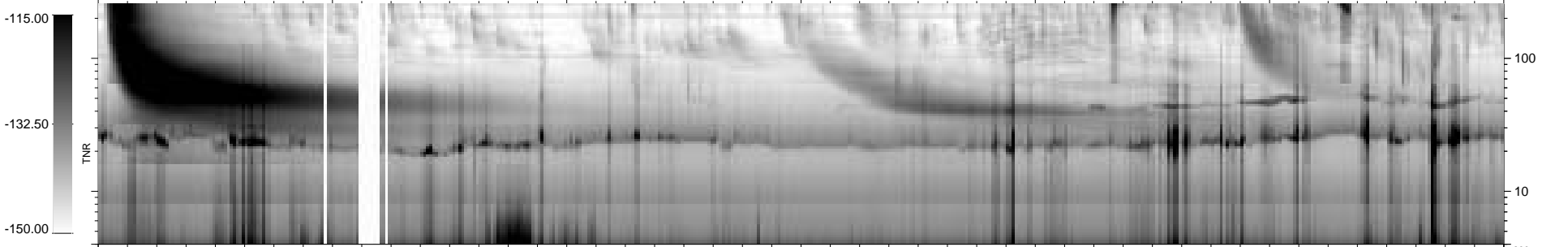
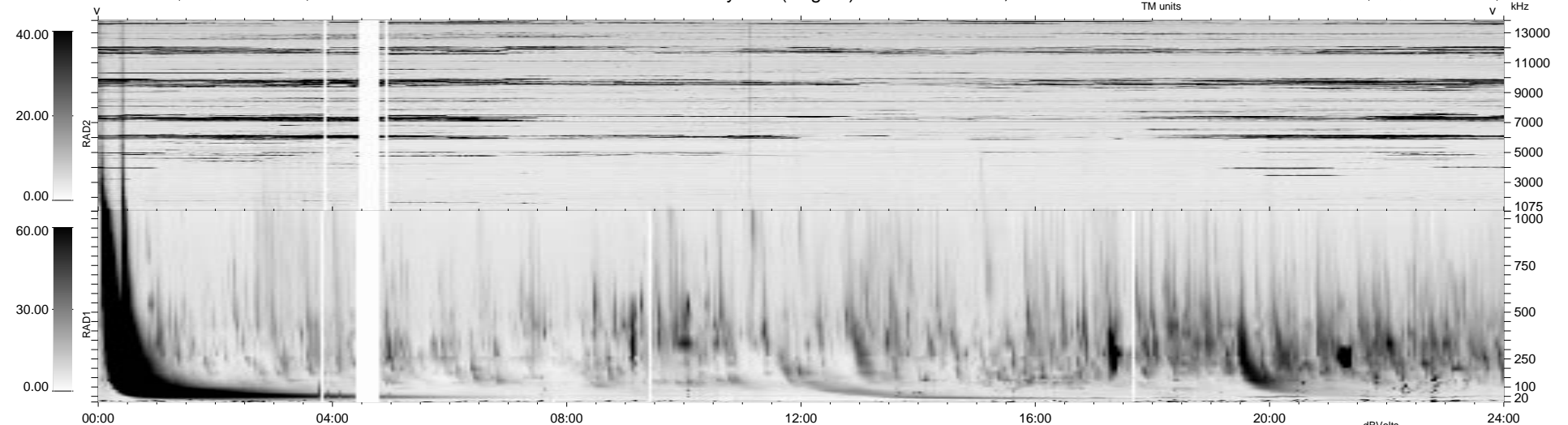


39 bad + 886 good MF/939MF projected (94%) - 14 missing MFs
 Avg interval = 180 secs
 Re = 66.60 (13.70, -64.81, 6.93 GSE)

1.7d VMS-SunOS LZ version = v01

WIND/WAVES Summary Plot (Page 1) for 07-JAN-1999, DOY = 7

DAILY Mon Sep 15, 2008
 Re = 71.63 (17.97, -69.31, 2.02 GSE)



```

RAD2
Antenna Ey .....
Mode LIN(1) .....
SUM/SEP SEP .....
Toggle OFF .....

RAD1
Antenna Ex .....
Mode LIS(2,3) .....
SUM/SEP SUM .....
Toggle OFF .....

TNR
Antenna ExEy .....
Mode A-32 .....
Sweep ABCDE .....
  
```