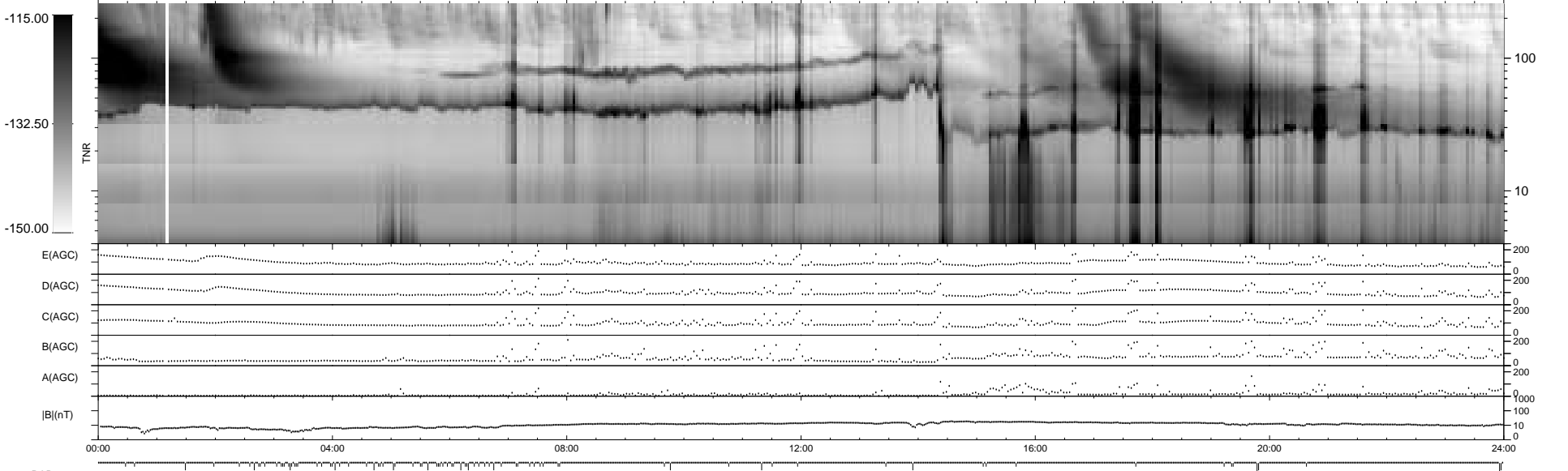
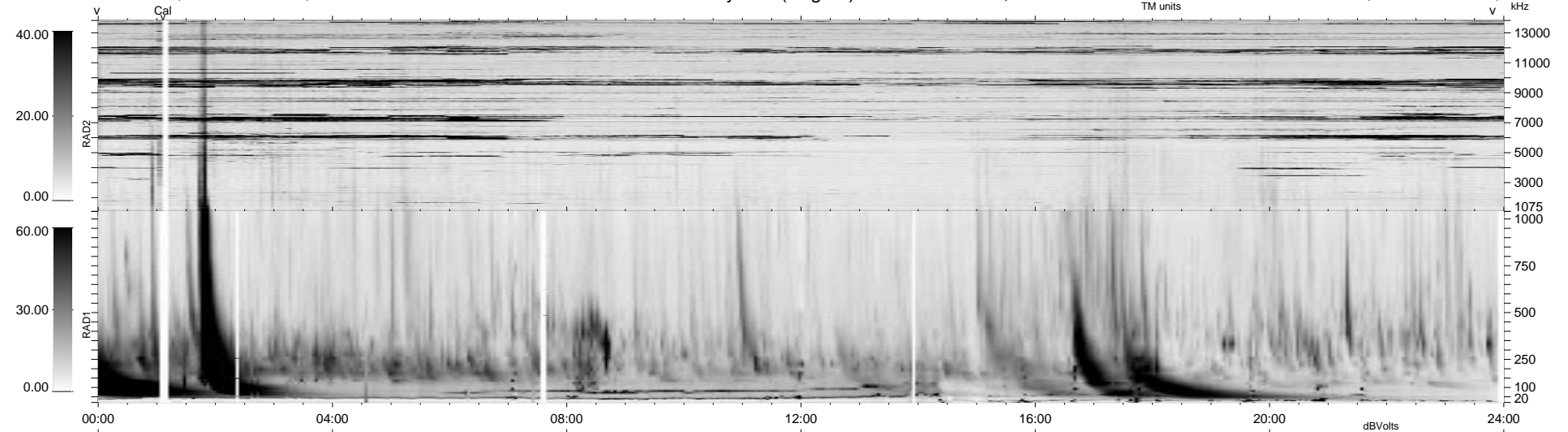


83 bad + 856 good MF/939MF projected (91%) - 0 missing MFs
 Avg interval = 180 secs
 Re = 59.64 (8.62, -57.87, 11.59 GSE)

1.7d VMS-SunOS LZ version = v01
 DAILY Mon Sep 15, 2008
 Re = 66.56 (13.66, -64.77, 6.96 GSE)

WIND/WAVES Summary Plot (Page 1) for 06-JAN-1999, DOY = 6



RAD2
 Antenna Ey
 Mode LIN(1)
 SUM/SEP SEP
 Toggle OFF

RAD1
 Antenna Ex
 Mode LIS(2,3)
 SUM/SEP SUM
 Toggle OFF

TNR
 Antenna ExEy
 Mode A-32
 Sweep ABCDE