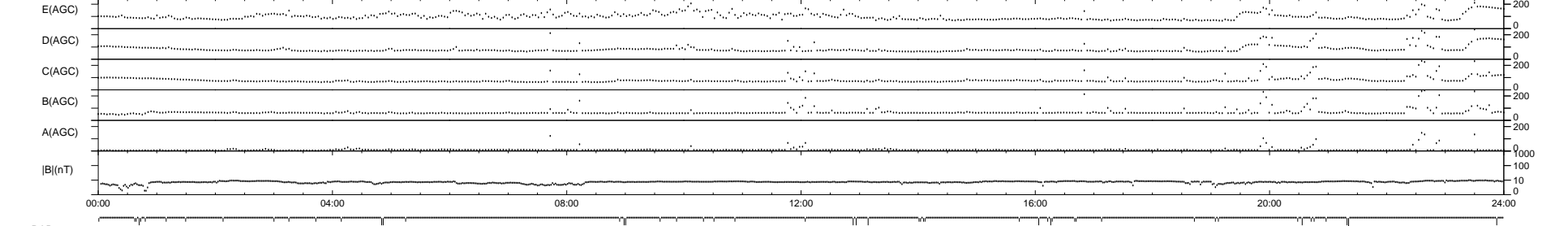
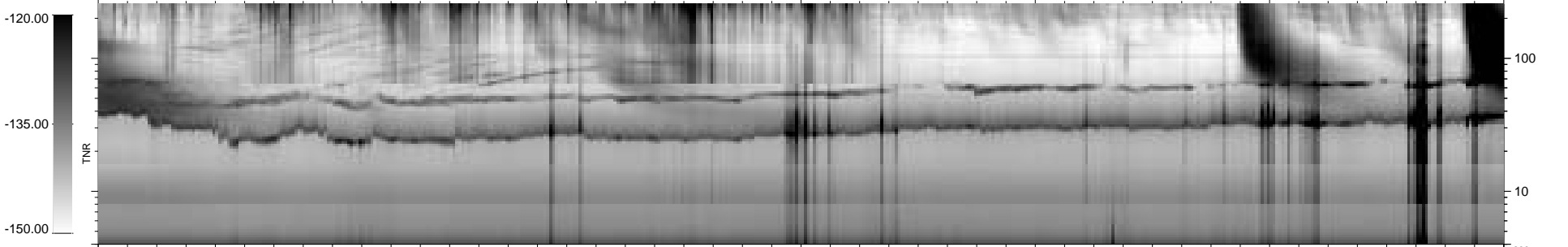
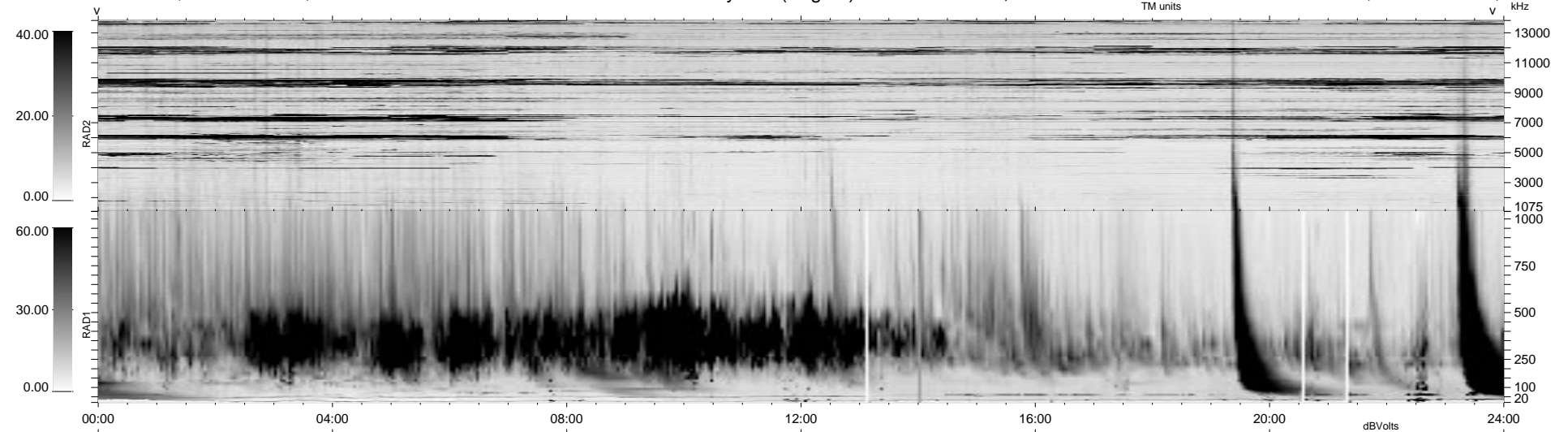


51 bad + 888 good MF/939MF projected (94%) - 0 missing MFs
Avg interval = 180 secs
Re = 50.45 (2.78, -47.91, 15.57 GSE)

1.7d VMS-SunOS LZ version = v01
DAILY Mon Sep 15, 2008
Re = 59.59 (8.59, -57.81, 11.62 GSE)

WIND/WAVES Summary Plot (Page 1) for 05-JAN-1999, DOY = 5



RAD2
Antenna Ey
Mode LIN(1)
SUM/SEP SEP
Toggle OFF

RAD1
Antenna Ex
Mode LIS(2,3)
SUM/SEP SUM
Toggle OFF

TNR
Antenna ExEy
Mode A-32
Sweep ABCDE