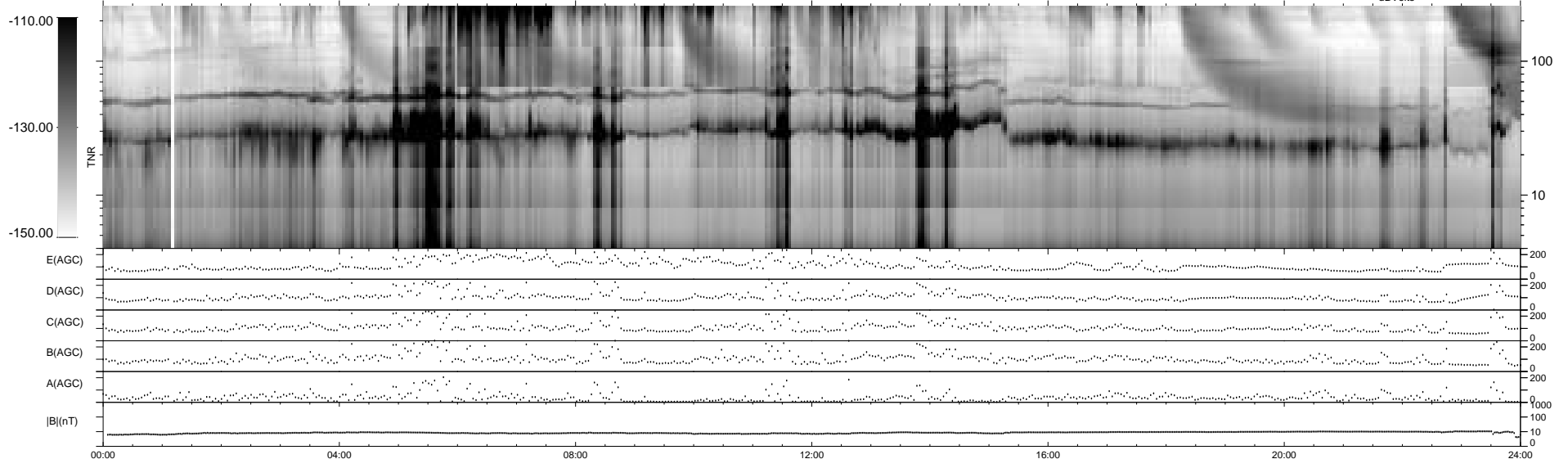
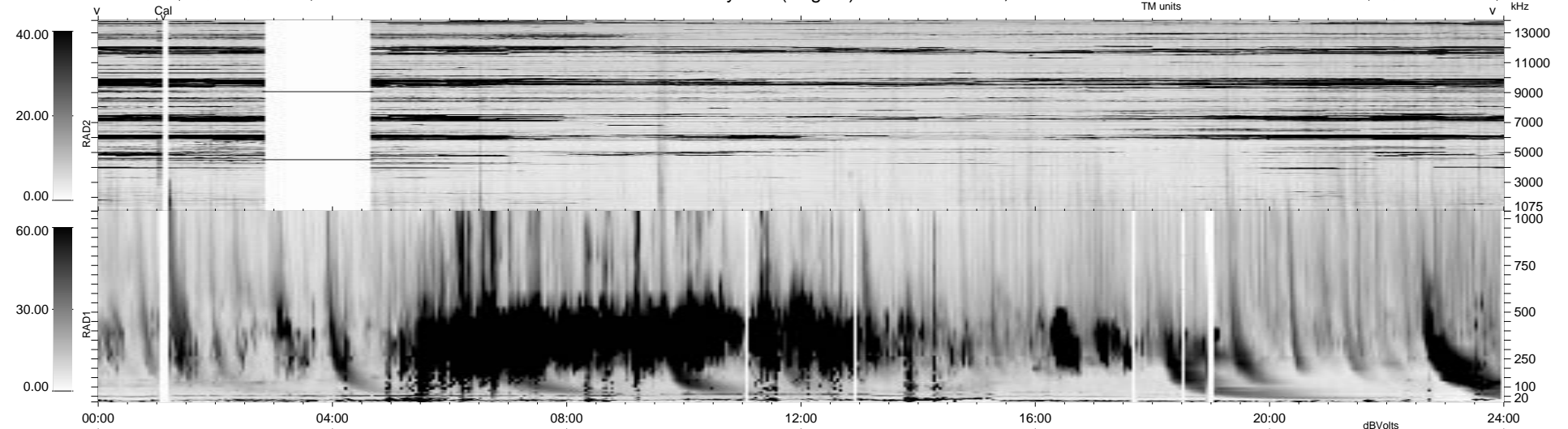


61 bad + 878 good MF/939MF projected (93%) - 0 missing MFs
 Avg interval = 180 secs
 Re = 38.44 (-3.69, -33.75, 18.03 GSE)

1.7d VMS-SunOS LZ version = v01

WIND/WAVES Summary Plot (Page 1) for 04-JAN-1999, DOY = 4

DAILY Mon Sep 15, 2008
 Re = 50.38 (2.74, -47.83, 15.59 GSE)



```

RAD2
Antenna Ey ..... LIS(8.11) ..... LIN(1) .....
Mode LIN(1) ..... LIS(8.11) ..... LIN(1) .....
SUM/SEP SEP .....
Toggle OFF .....

RAD1
Antenna Ex .....
Mode LIS(2.8) .....
SUM/SEP SUM .....
Toggle OFF .....

TNR
Antenna ExEy .....
Mode A-32 .....
Sweep ABCDE .....
  
```