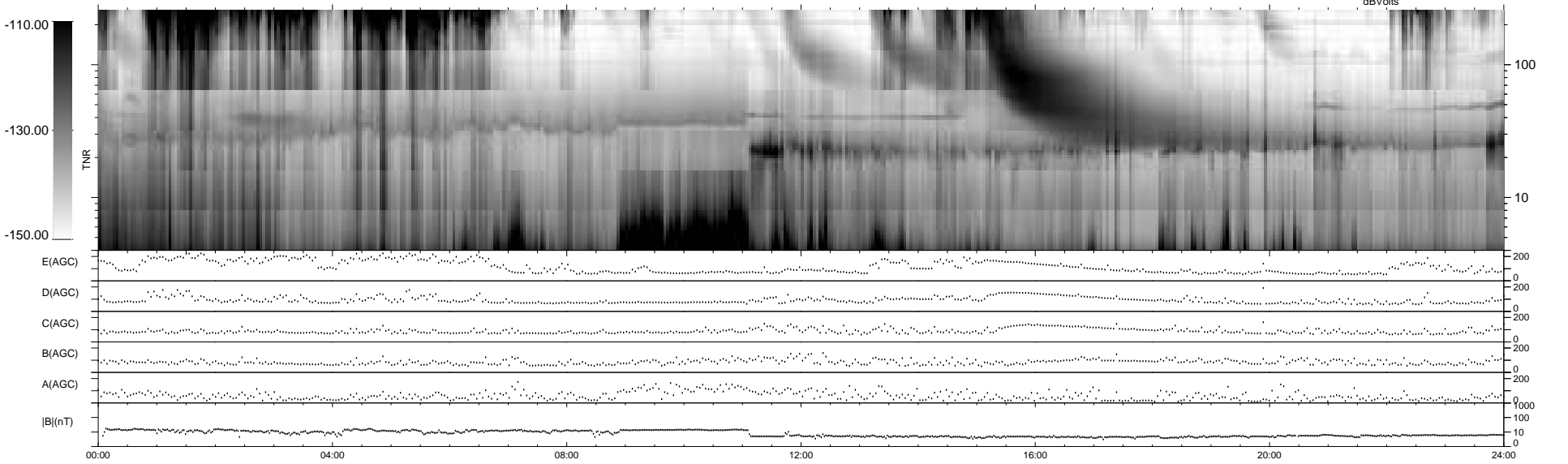
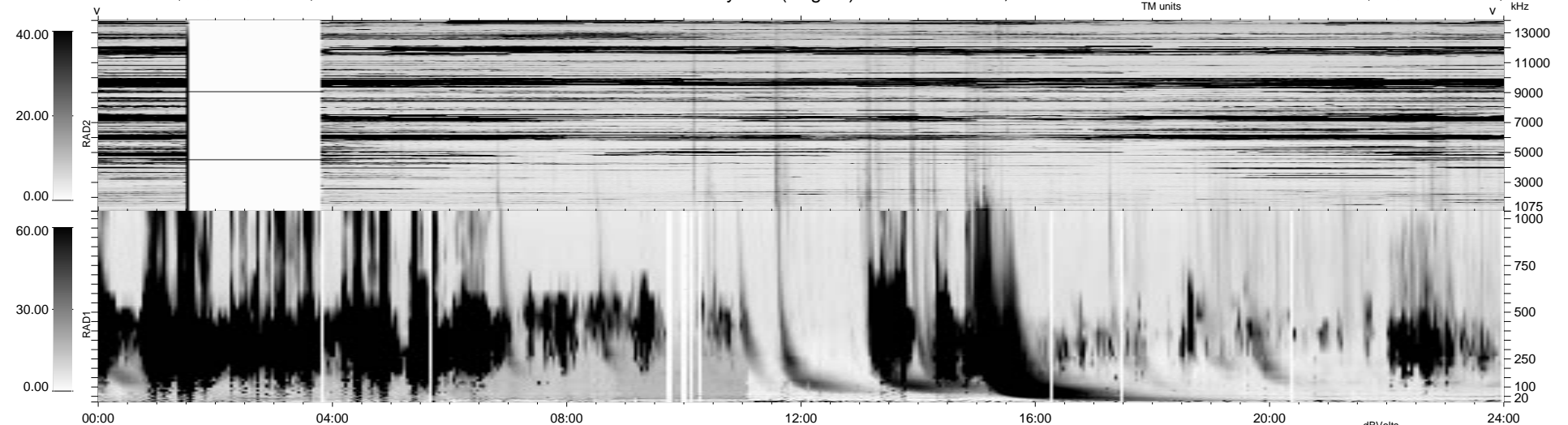


112 bad + 827 good MF/939MF projected (88%) - 0 missing MFs
 Avg interval = 180 secs
 Re = 22.70 (-9.60, -12.68, 16.20 GSE)

1.7d VMS-SunOS LZ version = v01

WIND/WAVES Summary Plot (Page 1) for 03-JAN-1999, DOY = 3

DAILY Mon Sep 15, 2008
 Re = 38.35 (-3.74, -33.63, 18.04 GSE)



```

RAD2
Antenna Ey .....
Mode LIN(1) ..... LIS(8.11) ..... LIN(1) .....
SUM/SEP SEP .....
Toggle OFF .....

RAD1
Antenna Ex .....
Mode LIS(2.8) .....
SUM/SEP SUM .....
Toggle OFF .....

TNR
Antenna ExEy .....
Mode A-32 .....
Sweep ABCDE .....
  
```