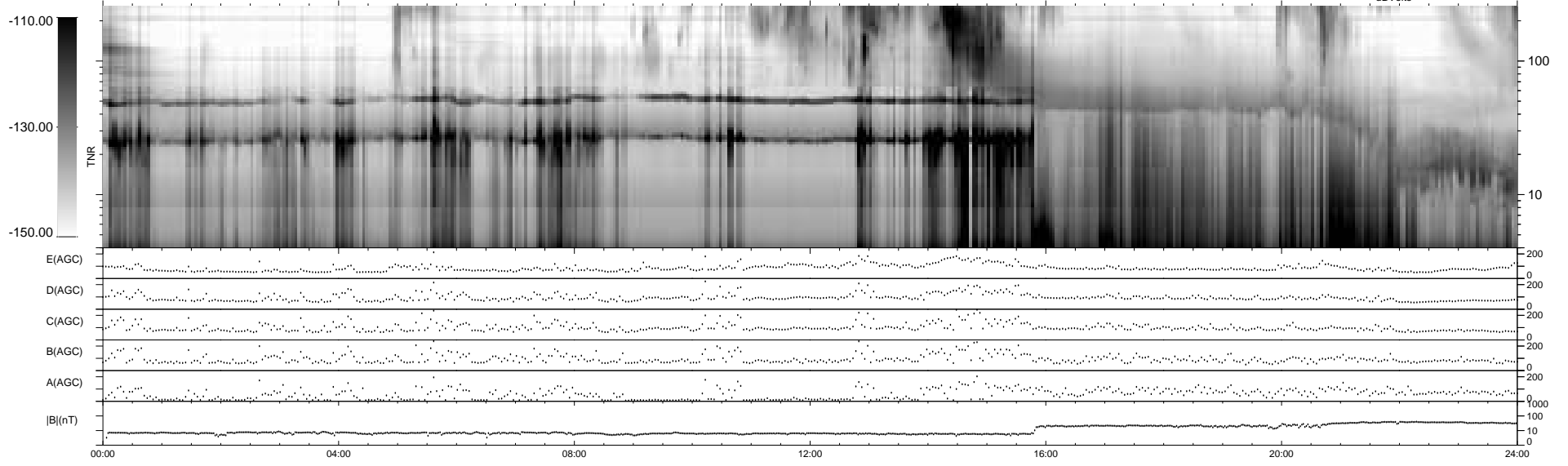
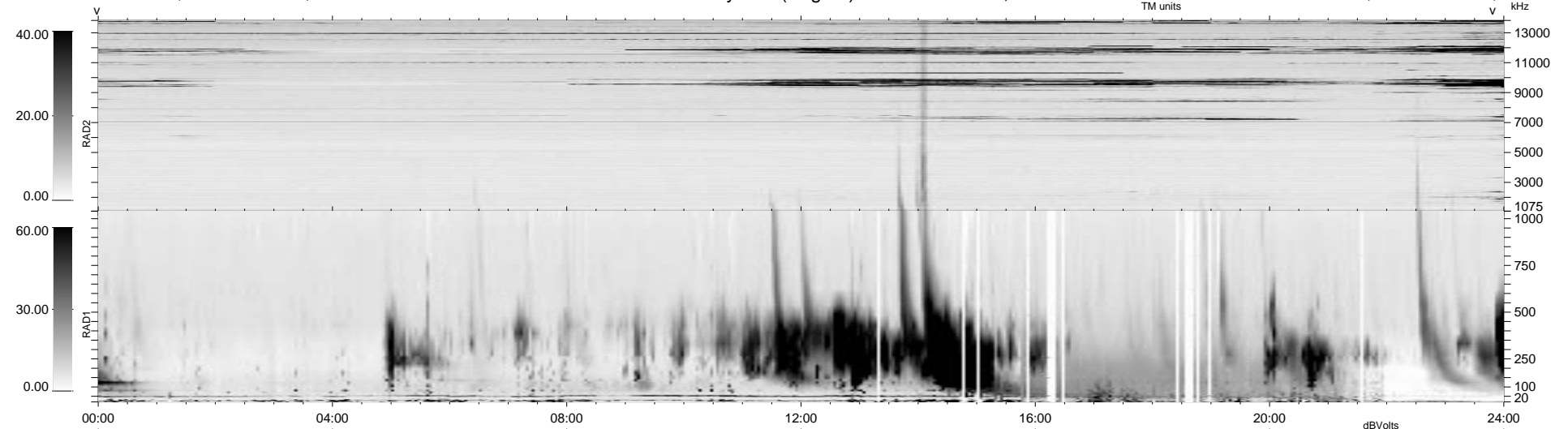


200 bad + 739 good MF/939MF projected (78%) - 0 missing MFs  
 Avg interval = 180 secs  
 Re = 29.29 (19.39, 1.21, -21.92 GSE)

1.7d VMS-SunOS LZ version = v01

### WIND/WAVES Summary Plot (Page 1) for 01-JAN-1999, DOY = 1

DAILY Mon Sep 15, 2008  
 Re = 12.64 (-0.84, 11.82, -4.41 GSE)



```

RAD2
Antenna Ey .....
Mode LIN(1) .....
SUM/SEP SEP .....
Toggle OFF .....

RAD1
Antenna Ex .....
Mode LIS(2,3) .....
SUM/SEP SUM .....
Toggle OFF .....

TNR
Antenna ExEy .....
Mode A-32 .....
Sweep ABCDE .....
  
```