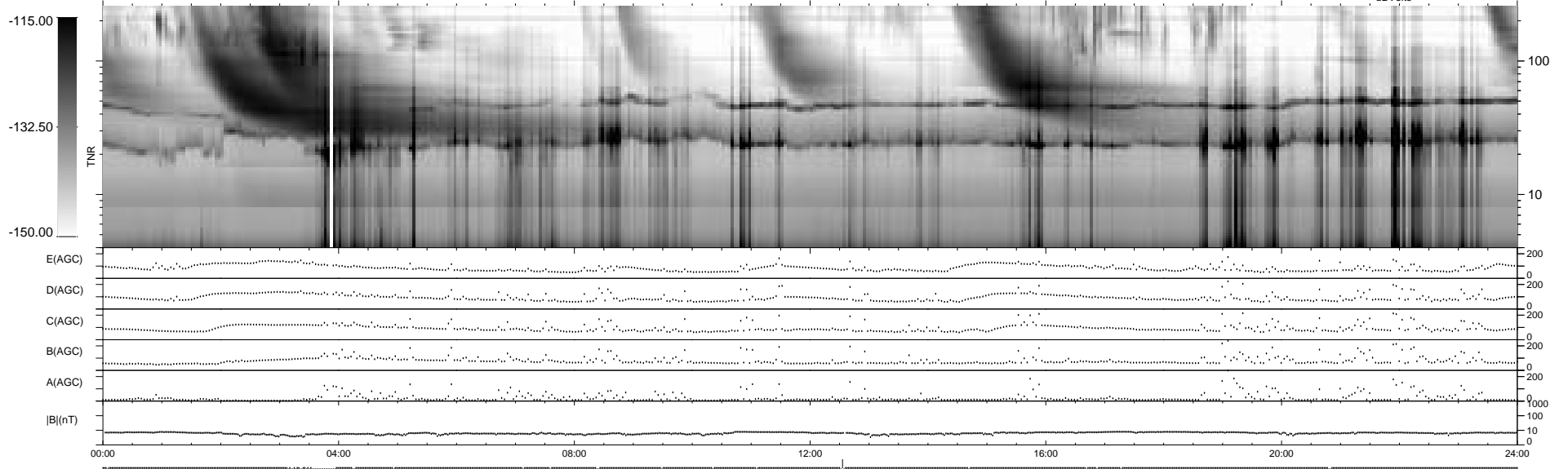
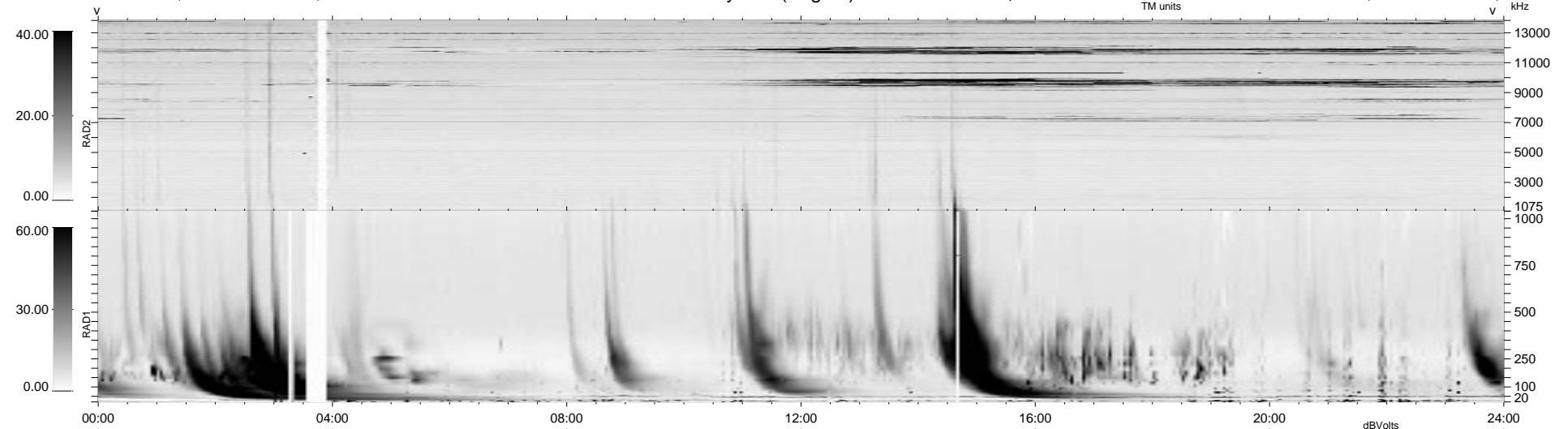


43 bad + 896 good MF/940MF projected (95%) - 1 missing MF
 Avg interval = 180 secs
 Re = 43.53 (31.10, -12.72, -27.68 GSE)

1.7d VMS-SunOS LZ version = v01
 DAILY Tue Sep 16, 2008
 Re = 29.40 (19.50, 1.11, -21.98 GSE)

WIND/WAVES Summary Plot (Page 1) for 31-DEC-1998, DOY = 365



RAD2
 Antenna Ey
 Mode LIN(1)
 SUM/SEP SEP
 Toggle OFF

RAD1
 Antenna Ex
 Mode LIS(2,3)
 SUM/SEP SUM
 Toggle OFF

TNR
 Antenna ExEy
 Mode A-32
 Sweep ABCDE