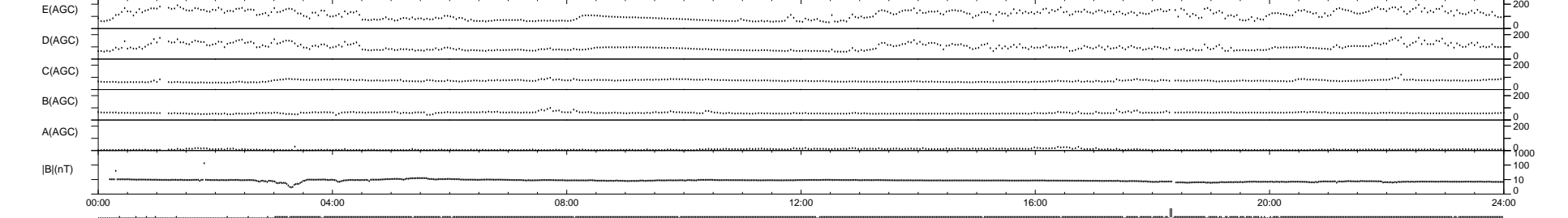
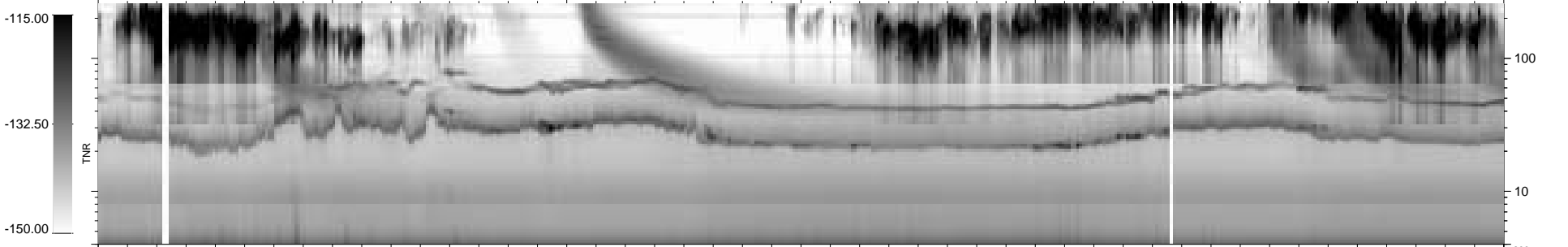
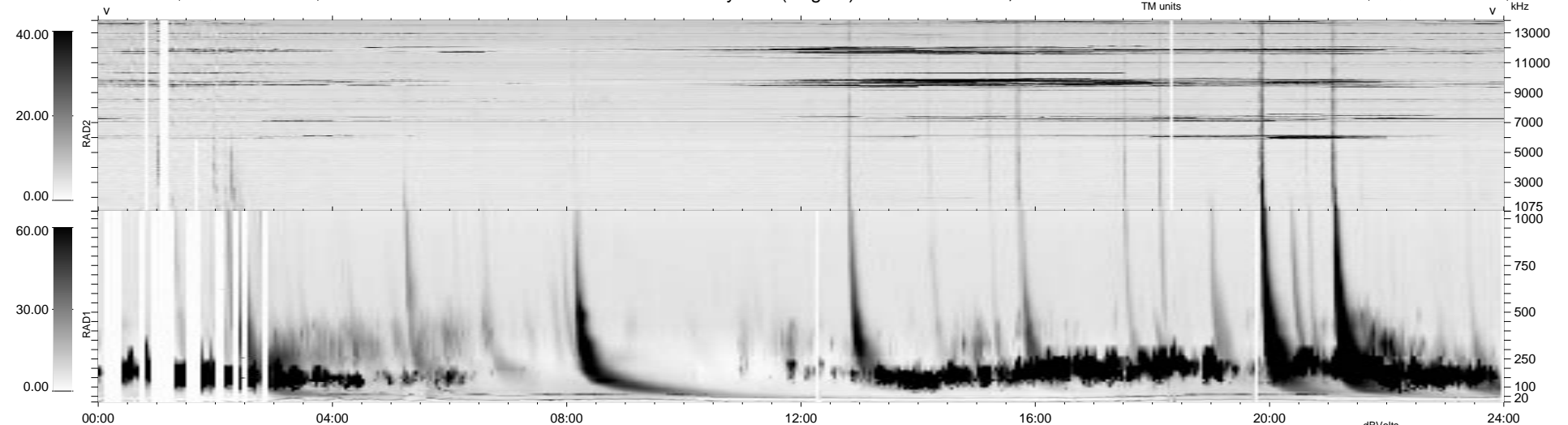


147 bad + 790 good MF/939MF projected (84%) - 2 missing MFs
 Avg interval = 180 secs
 Re = 54.43 (38.74, -24.61, -29.26 GSE)

1.7d VMS-SunOS LZ version = v01
 DAILY Tue Sep 16, 2008
 Re = 43.62 (31.17, -12.81, -27.70 GSE)

WIND/WAVES Summary Plot (Page 1) for 30-DEC-1998, DOY = 364



RAD2
 Antenna Ey
 Mode LIN(1)
 SUM/SEP SEP
 Toggle OFF

RAD1
 Antenna Ex
 Mode LIS(2,3)
 SUM/SEP SUM
 Toggle OFF

TNR
 Antenna ExEy
 Mode A-32
 Sweep ABCDE