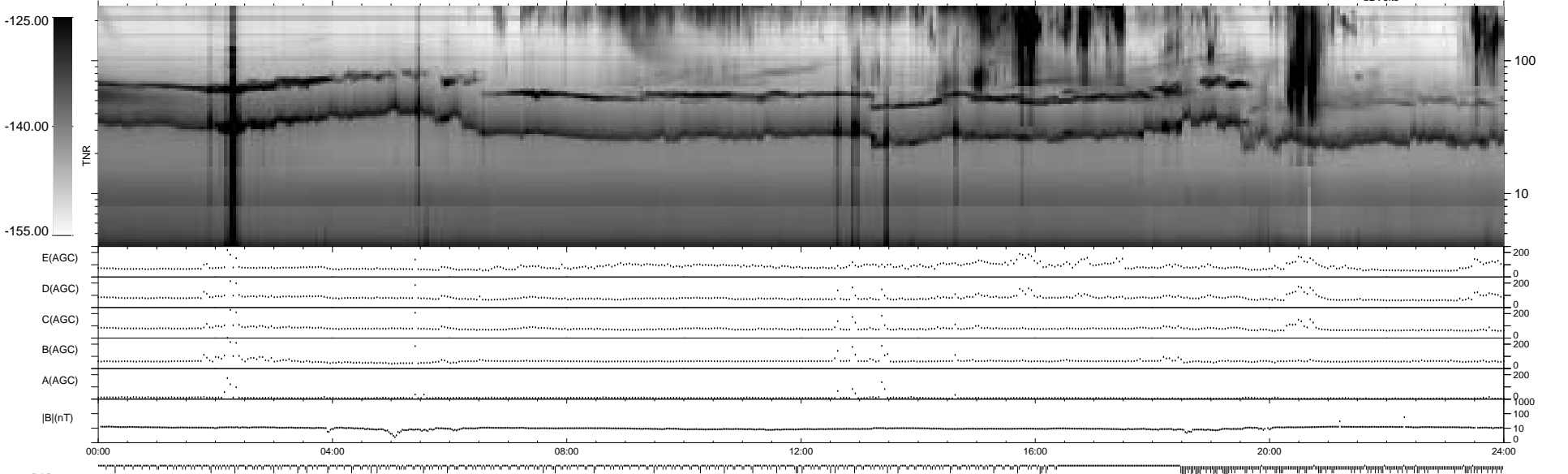
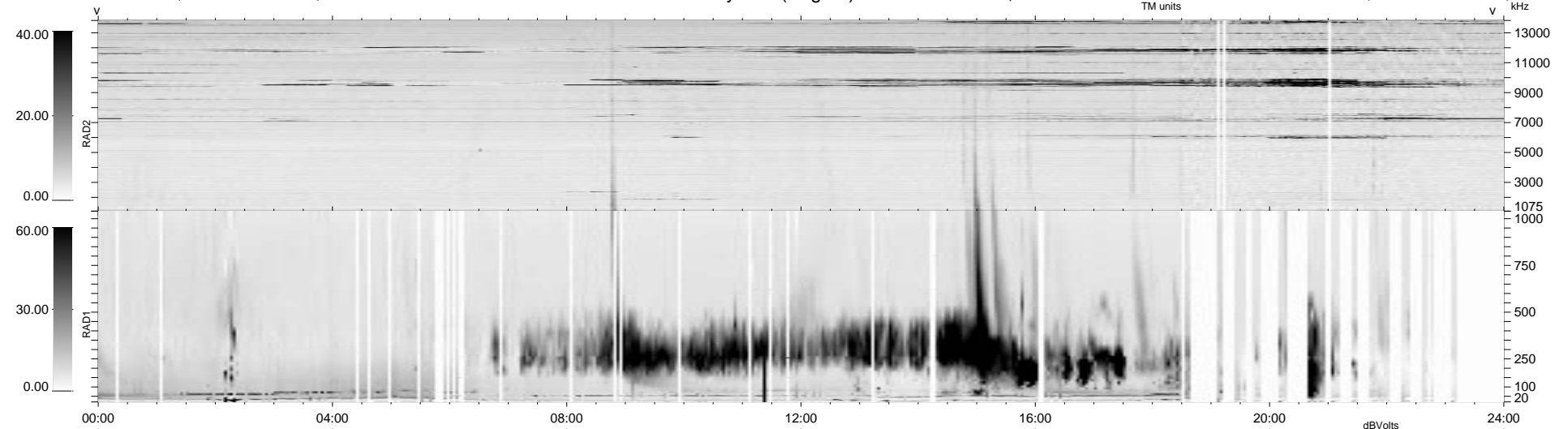


425 bad + 514 good MF/939MF projected (54%) - 0 missing MFs
 Avg interval = 180 secs
 Re = 63.03 (44.10, -34.71, -28.69 GSE)

1.7d VMS-SunOS LZ version = v02
 DAILY Tue Sep 16, 2008
 Re = 54.57 (38.83, -24.77, -29.27 GSE)

WIND/WAVES Summary Plot (Page 1) for 29-DEC-1998, DOY = 363



RAD2
 Antenna Ey
 Mode LIN(1)
 SUM/SEP SEP
 Toggle OFF

RAD1
 Antenna Ex
 Mode LIS(2,3)
 SUM/SEP SUM
 Toggle OFF

TNR
 Antenna ExEy
 Mode A-32
 Sweep ABCDE