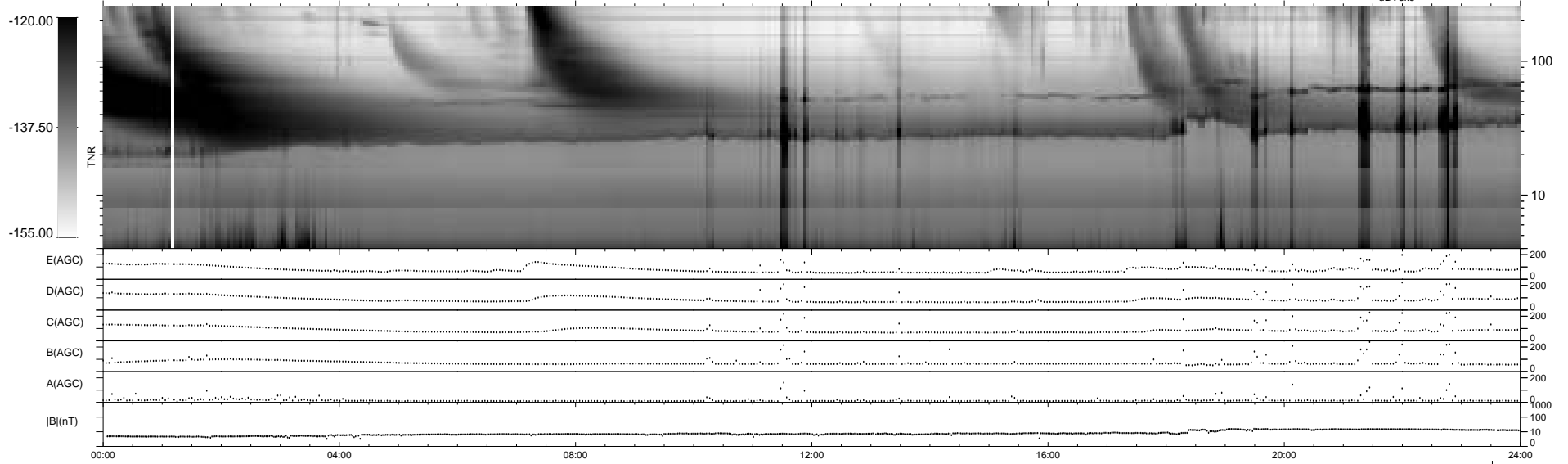
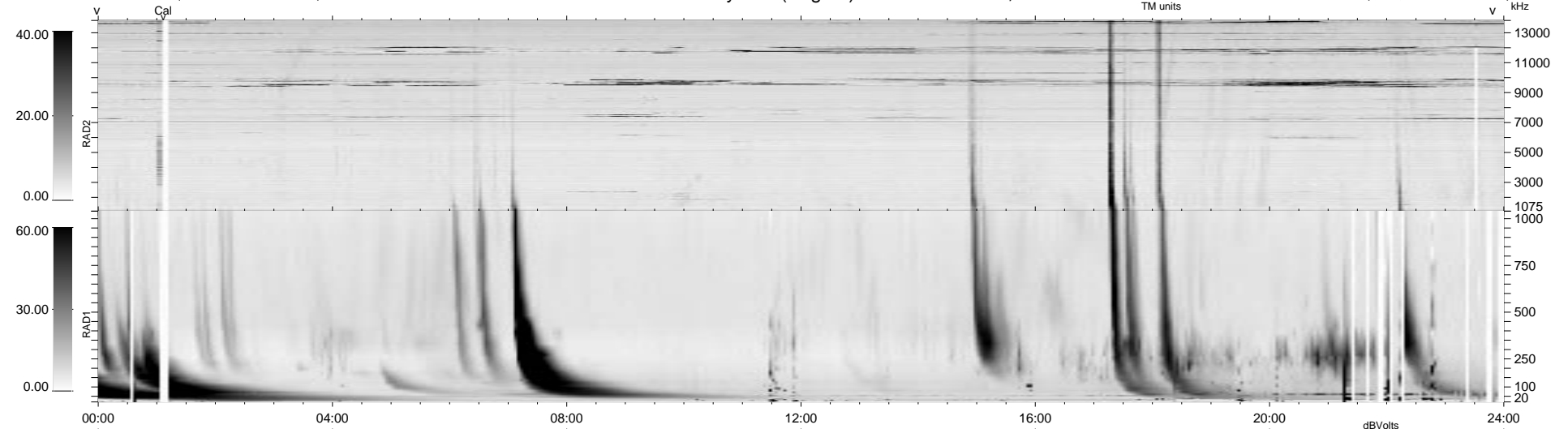


77 bad + 861 good MF/939MF projected (91%) - 1 missing MF
 Avg interval = 180 secs
 Re = 69.62 (47.75, -43.02, -26.75 GSE)

1.7d VMS-SunOS LZ version = v01
 DAILY Tue Sep 16, 2008
 Re = 63.08 (44.13, -34.78, -28.68 GSE)

WIND/WAVES Summary Plot (Page 1) for 28-DEC-1998, DOY = 362



RAD2
 Antenna Ey
 Mode LIN(1)
 SUM/SEP SEP
 Toggle OFF
 RAD1
 Antenna Ex
 Mode LIS(2,3)
 SUM/SEP SUM
 Toggle OFF
 TNR
 Antenna ExEy
 Mode A-32
 Sweep ABCDE