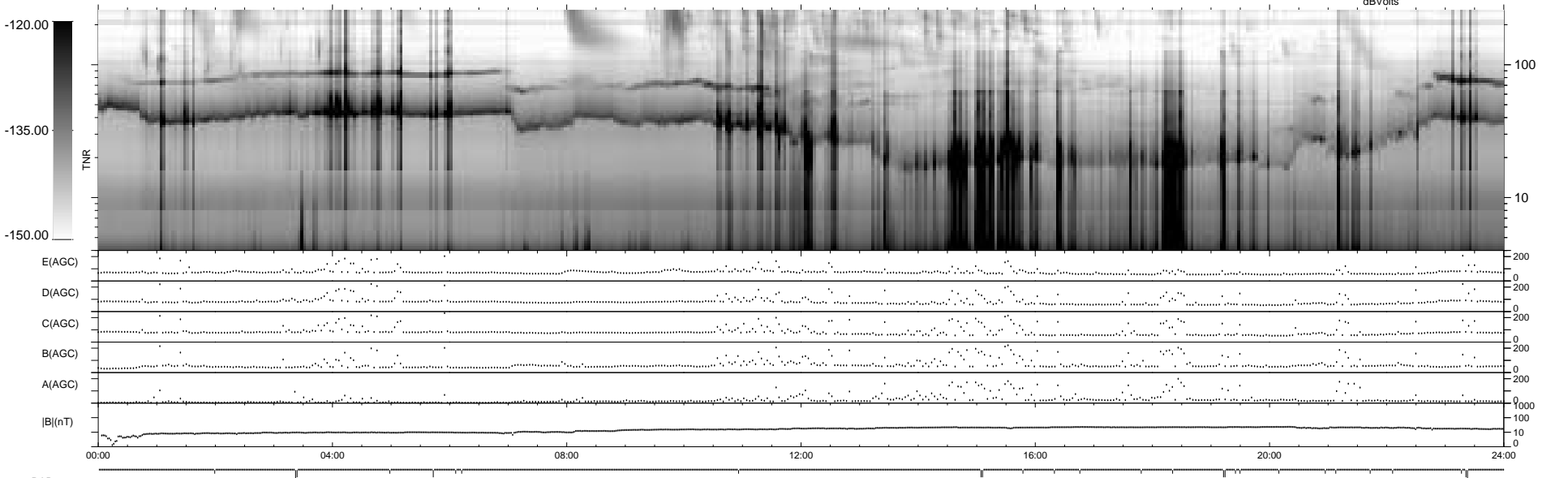
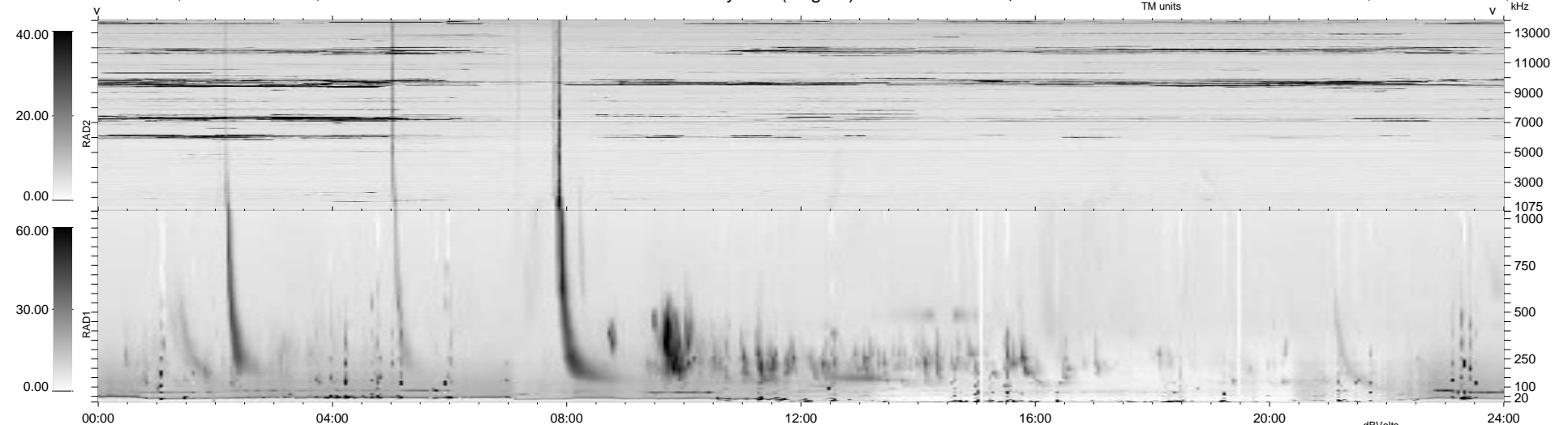


27 bad + 912 good MF/939MF projected (97%) - 0 missing MFs
 Avg interval = 180 secs
 Re = - 80.08 (51.47, -59.16, -16.27 GSE)

1.7d VMS-SunOS LZ version = v01
 DAILY Tue Sep 16, 2008
 Re = 78.02 (51.30, -55.16, -20.30 GSE)

WIND/WAVES Summary Plot (Page 1) for 25-DEC-1998, DOY = 359



RAD2 Antenna Ey
 Mode LIN(1)
 SUM/SEP SEP
 Toggle OFF

RAD1 Antenna Ex
 Mode LIS(2,3)
 SUM/SEP SUM
 Toggle OFF

TNR Antenna ExEy
 Mode A-32
 Sweep ABCDE