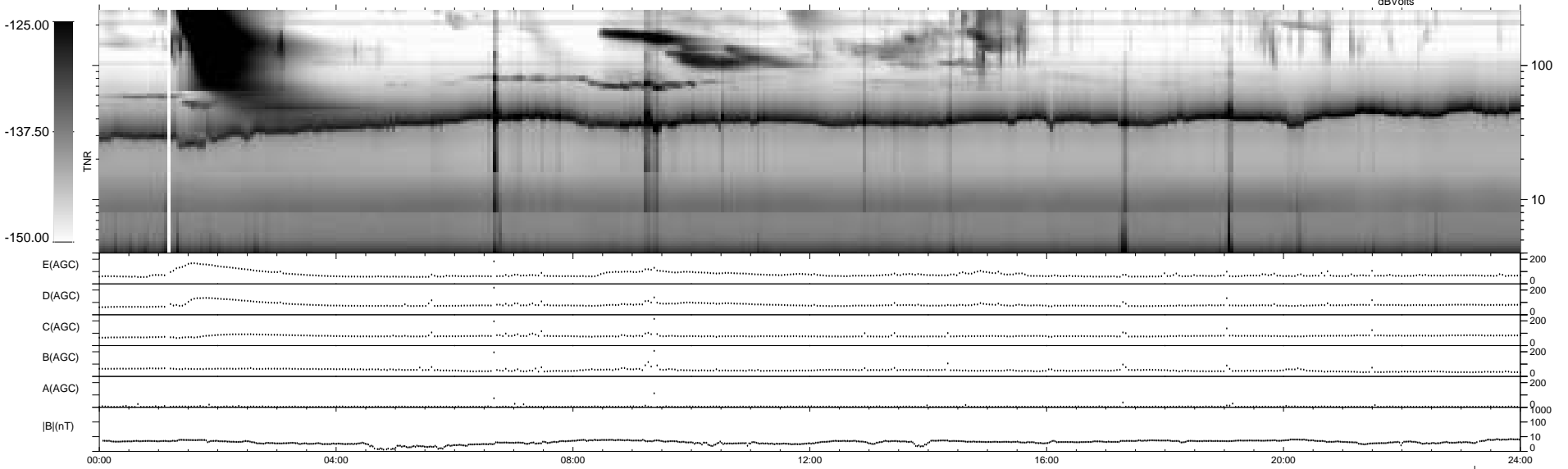
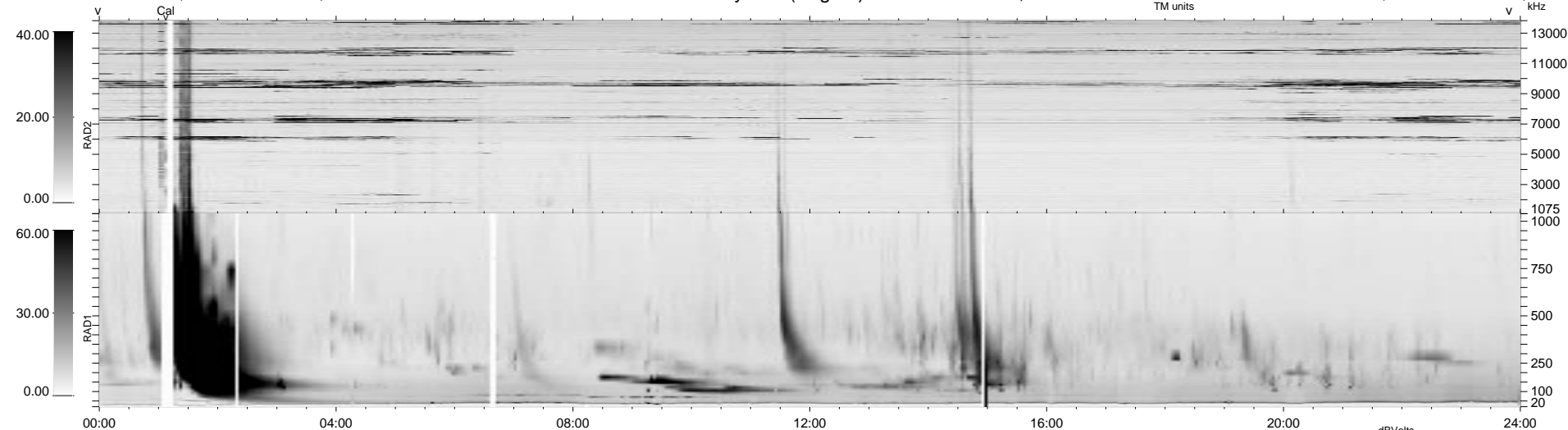


31 bad + 907 good MF/939MF projected (96%) - 1 missing MF
 Avg interval = 180 secs
 Re = 80.84 (50.64, -61.90, -11.84 GSE)

1.7d VMS-SunOS LZ version = v01
 DAILY Tue Sep 16, 2008
 Re = 80.09 (51.47, -59.18, -16.24 GSE)

WIND/WAVES Summary Plot (Page 1) for 24-DEC-1998, DOY = 358



RAD2
 Antenna Ey
 Mode LIN(1)
 SUM/SEP SEP
 Toggle OFF
 RAD1
 Antenna Ex
 Mode LIS(2,3)
 SUM/SEP SUM
 Toggle OFF
 TNR
 Antenna ExEy
 Mode A-32
 Sweep ABCDE