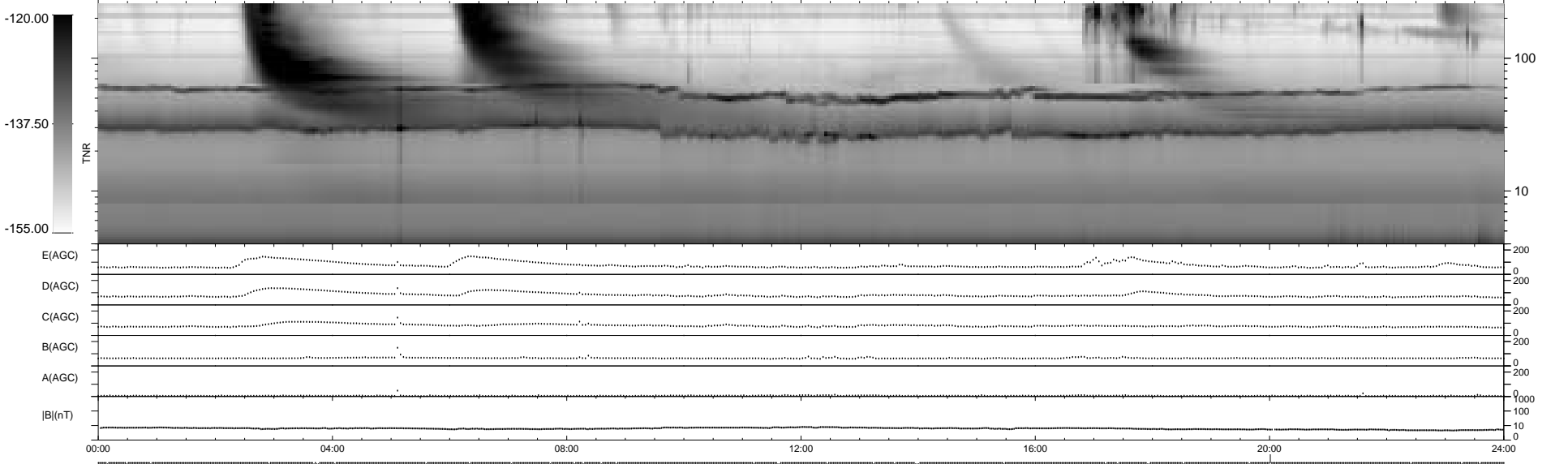
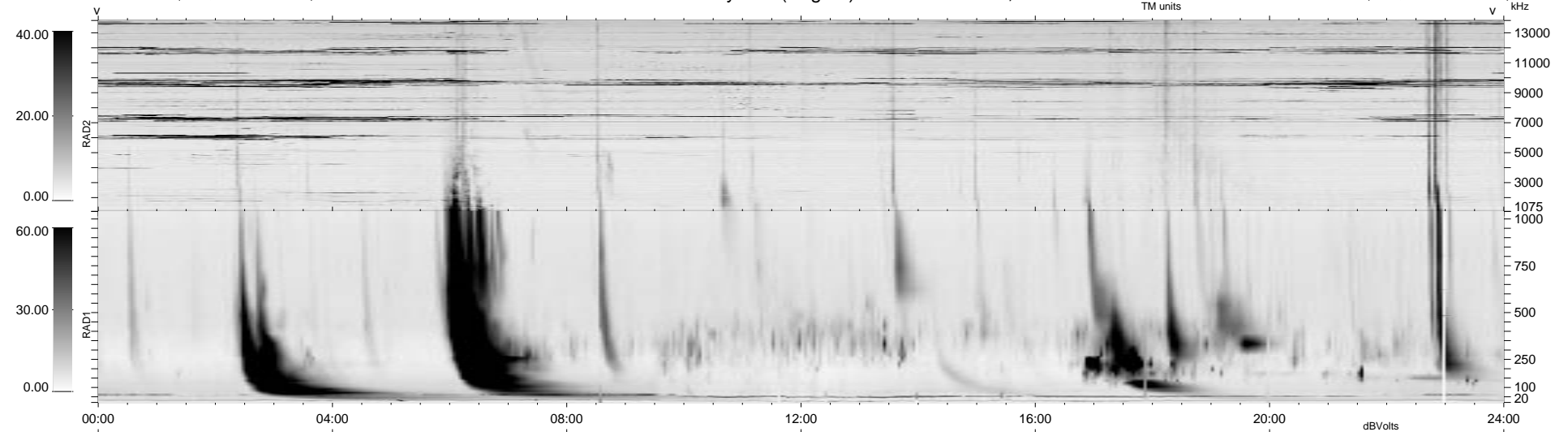


35 bad + 904 good MF/940MF projected (96%) - 1 missing MF  
 Avg interval = 180 secs  
 Re = 80.30 (48.81, -63.36, -7.15 GSE)

1.7d VMS-SunOS LZ version = v01

WIND/WAVES Summary Plot (Page 1) for 23-DEC-1998, DOY = 357

DAILY Tue Sep 16, 2008  
 Re = 80.84 (50.63, -61.91, -11.81 GSE)



```

RAD2
Antenna Ey .....
Mode LIN(1) .....
SUM/SEP SEP .....
Toggle OFF .....

RAD1
Antenna Ex .....
Mode LIS(2,3) .....
SUM/SEP SUM .....
Toggle OFF .....

TNR
Antenna ExEy .....
Mode A-32 .....
Sweep ABCDE .....
  
```