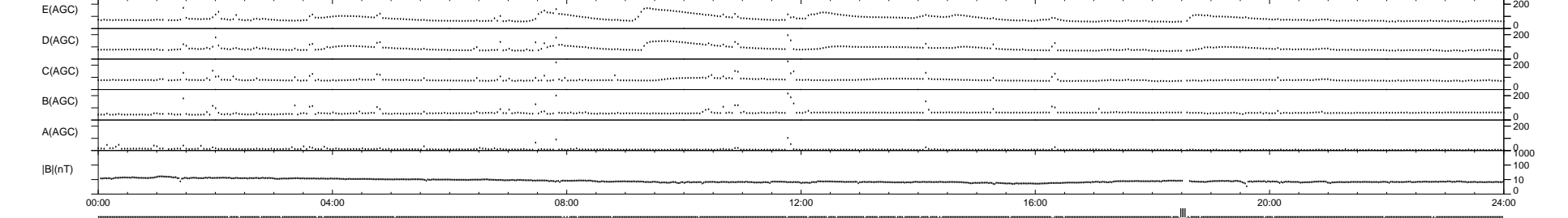
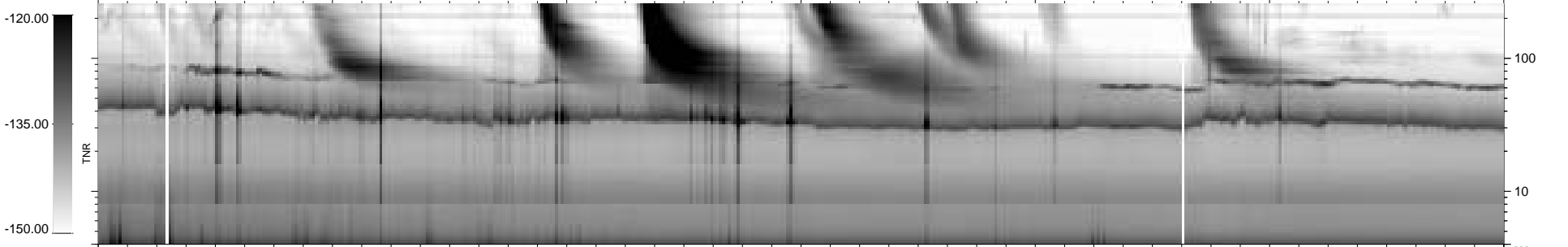
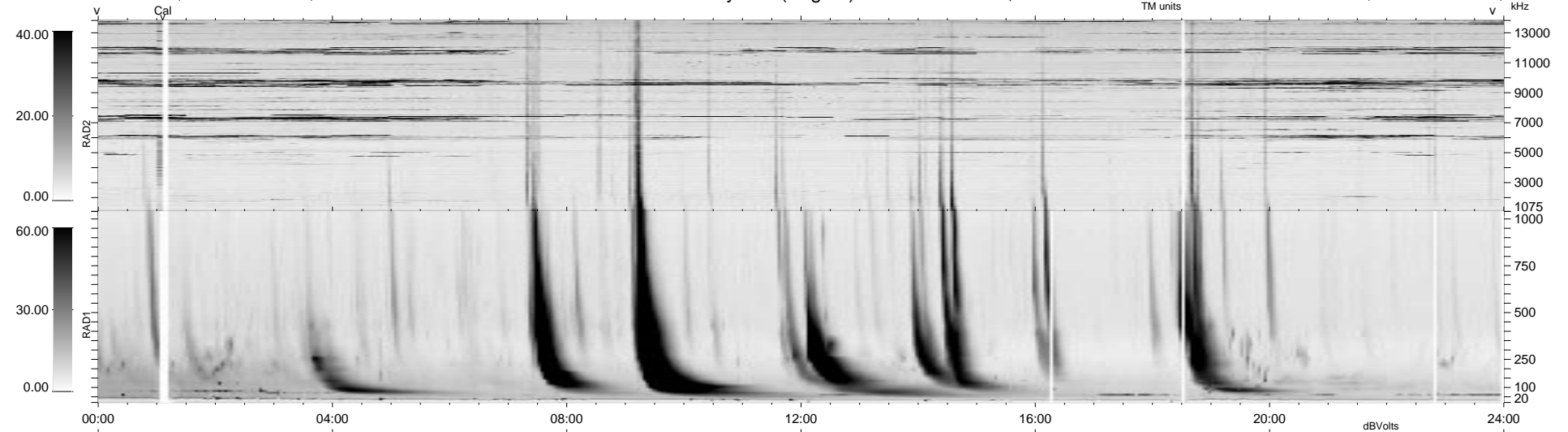


39 bad + 896 good MF/939MF projected (95%) - 4 missing MFs
 Avg interval = 180 secs
 Re = 78.43 (45.94, -63.52, -2.30 GSE)

1.7d VMS-SunOS LZ version = v02

WIND/WAVES Summary Plot (Page 1) for 22-DEC-1998, DOY = 356

DAILY Tue Sep 16, 2008
 Re = 80.29 (48.79, -63.37, -7.12 GSE)



RAD2
 Antenna Ey
 Mode LIN(1)
 SUM/SEP SEP
 Toggle OFF

RAD1
 Antenna Ex
 Mode LIS(2,3)
 SUM/SEP SUM
 Toggle OFF

TNR
 Antenna ExEy
 Mode A-32
 Sweep ABCDE