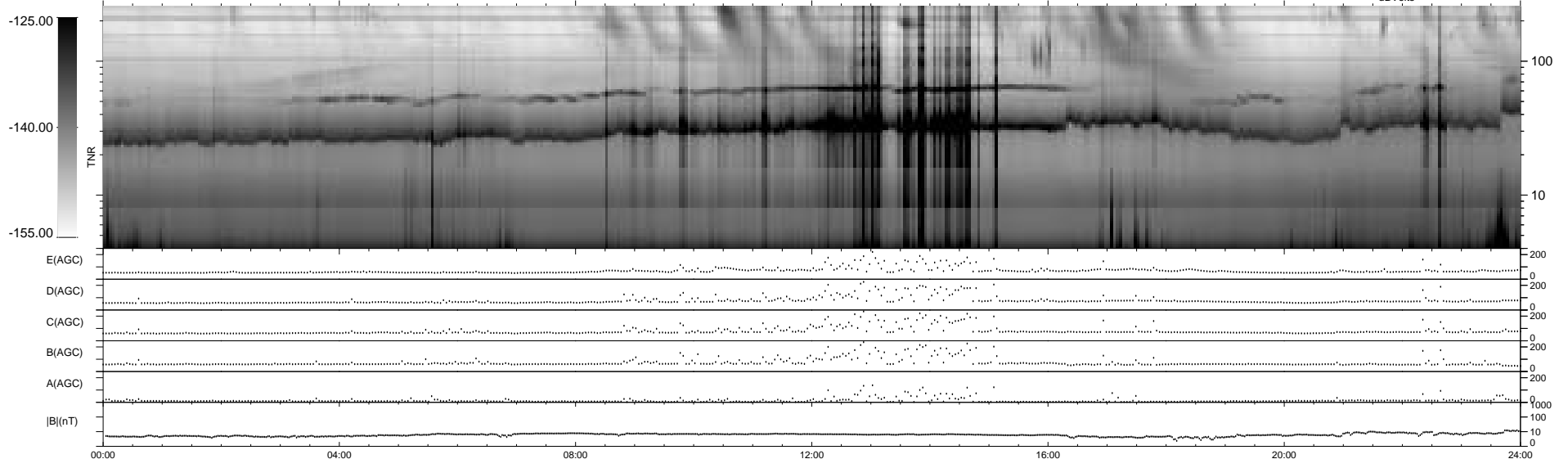
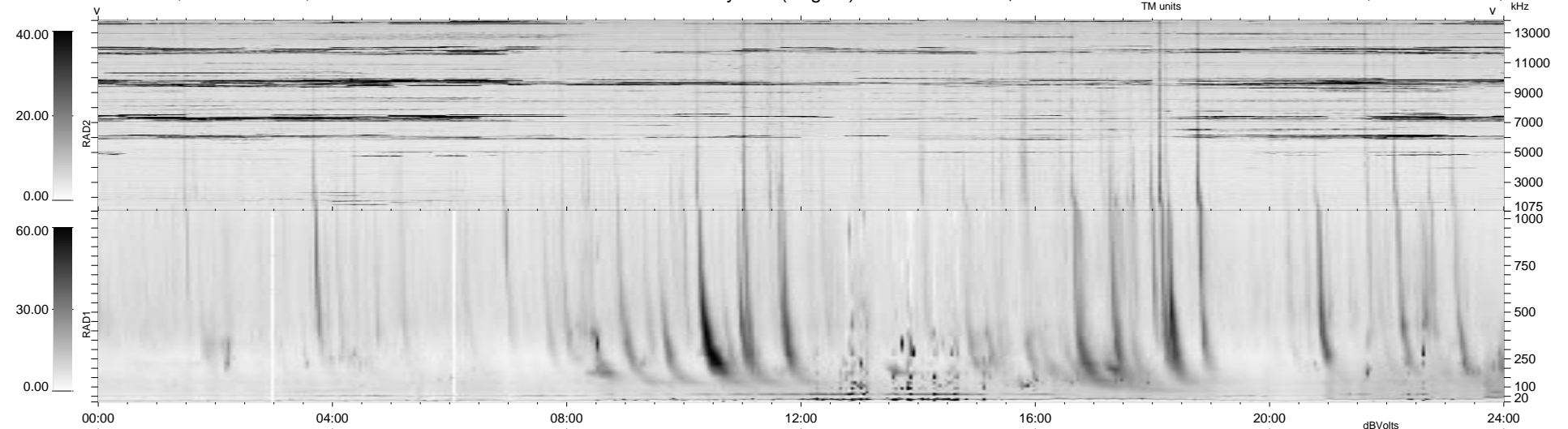


25 bad + 914 good MF/939MF projected (97%) - 0 missing MFs
 Avg interval = 180 secs
 Re = 75.16 (41.97, -62.29, 2.60 GSE)

1.7d VMS-SunOS LZ version = v01
 DAILY Tue Sep 16, 2008
 Re = 78.41 (45.92, -63.52, -2.27 GSE)

WIND/WAVES Summary Plot (Page 1) for 21-DEC-1998, DOY = 355



RAD2
 Antenna Ey
 Mode LIN(1)
 SUM/SEP SEP
 Toggle OFF
 RAD1
 Antenna Ex
 Mode LIS(2,3)
 SUM/SEP SUM
 Toggle OFF
 TNR
 Antenna ExEy
 Mode A-32
 Sweep ABCDE