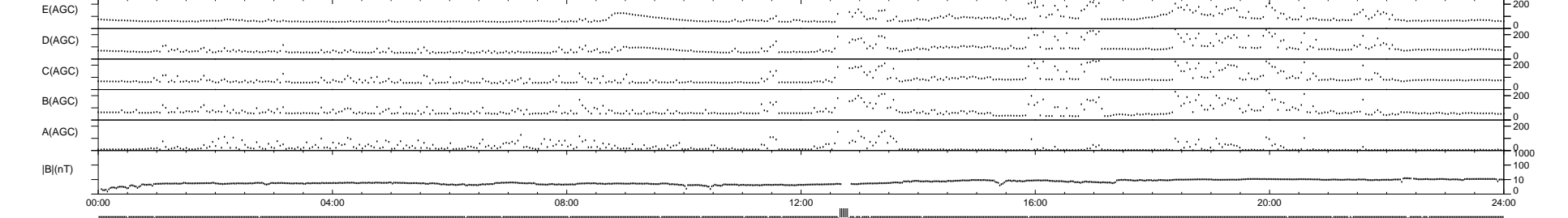
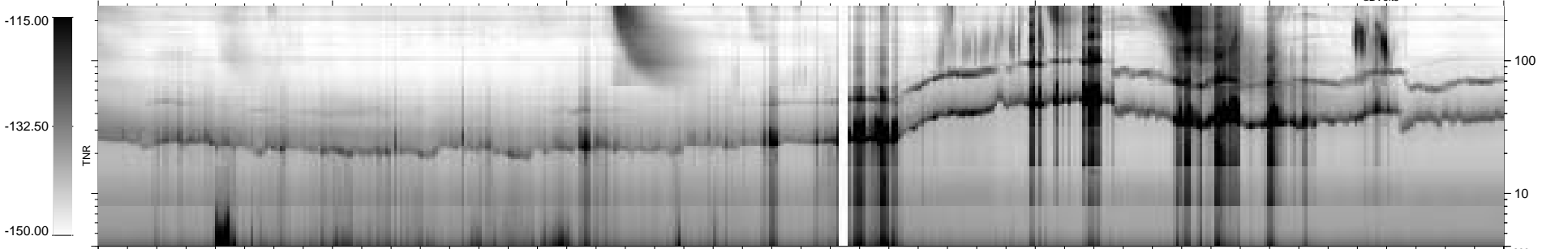
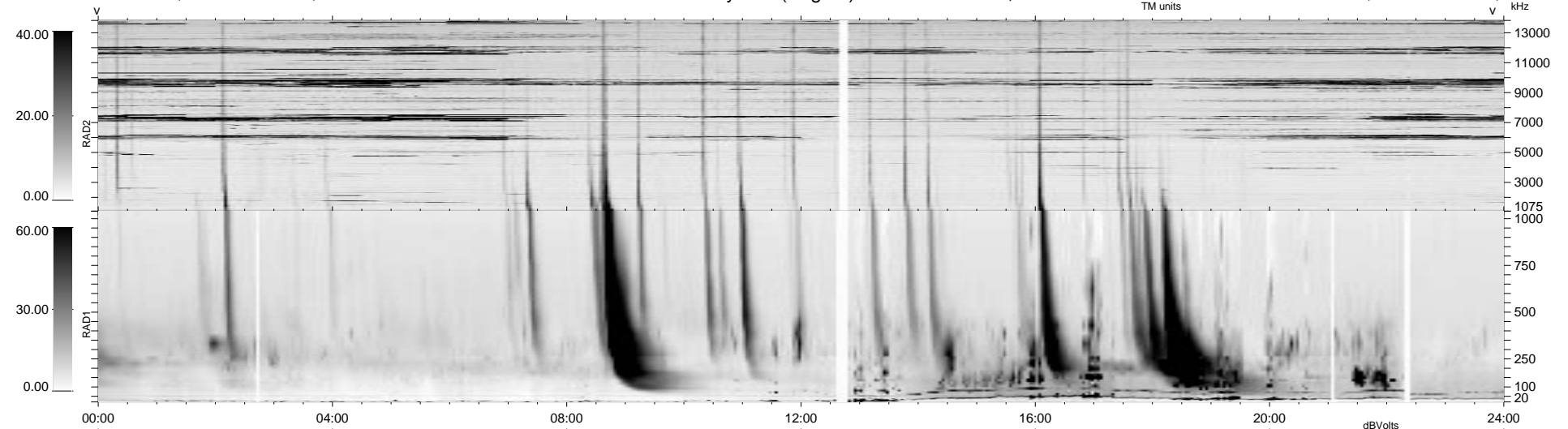


26 bad + 907 good MF/939MF projected (96%) - 6 missing MFs
 Avg interval = 180 secs
 Re = 63.93 (30.31, -54.99, 12.00 GSE)

1.7d VMS-SunOS LZ version = v01
 DAILY Tue Sep 16, 2008
 Re = 70.35 (36.77, -59.51, 7.46 GSE)

WIND/WAVES Summary Plot (Page 1) for 19-DEC-1998, DOY = 353



RAD2
 Antenna Ey
 Mode LIN(1)
 SUM/SEP SEP
 Toggle OFF

RAD1
 Antenna Ex
 Mode LIS(2,3)
 SUM/SEP SUM
 Toggle OFF

TNR
 Antenna ExEy
 Mode A-32
 Sweep ABCDE