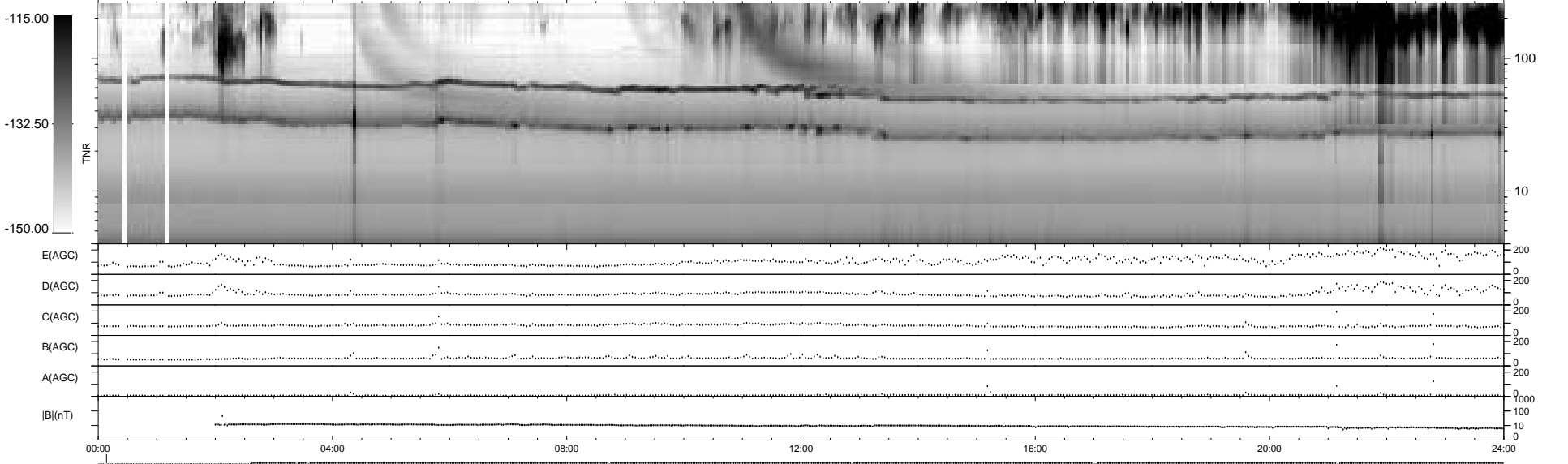
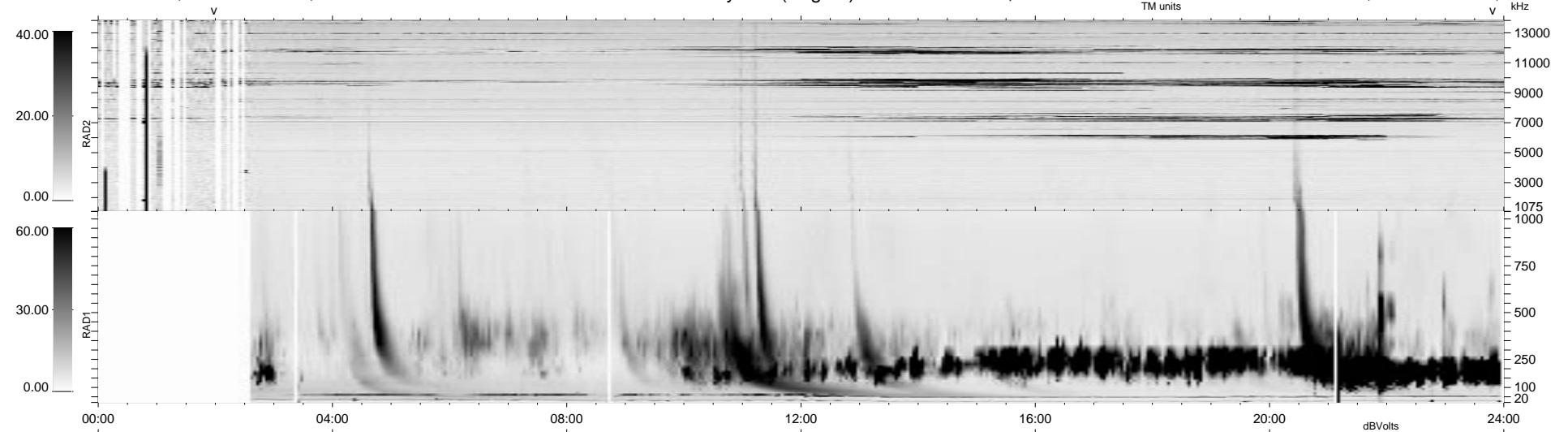


109 bad + 829 good MF/939MF projected (88%) - 1 missing MF  
 Avg interval = 180 secs  
 Re = 48.31 (38.57, -8.00, -27.96 GSE)

1.7d VMS-SunOS LZ version = v02

WIND/WAVES Summary Plot (Page 1) for 12-DEC-1998, DOY = 346

DAILY Tue Sep 16, 2008  
 Re = 37.32 (27.07, 0.74, -25.68 GSE)



RAD2  
 Antenna Ey  
 Mode LIN(1)  
 SUM/SEP SEP  
 Toggle OFF

RAD1  
 Antenna  
 Mode  
 SUM/SEP  
 Toggle

TNR  
 Antenna ExEy  
 Mode A-32  
 Sweep ABCDE