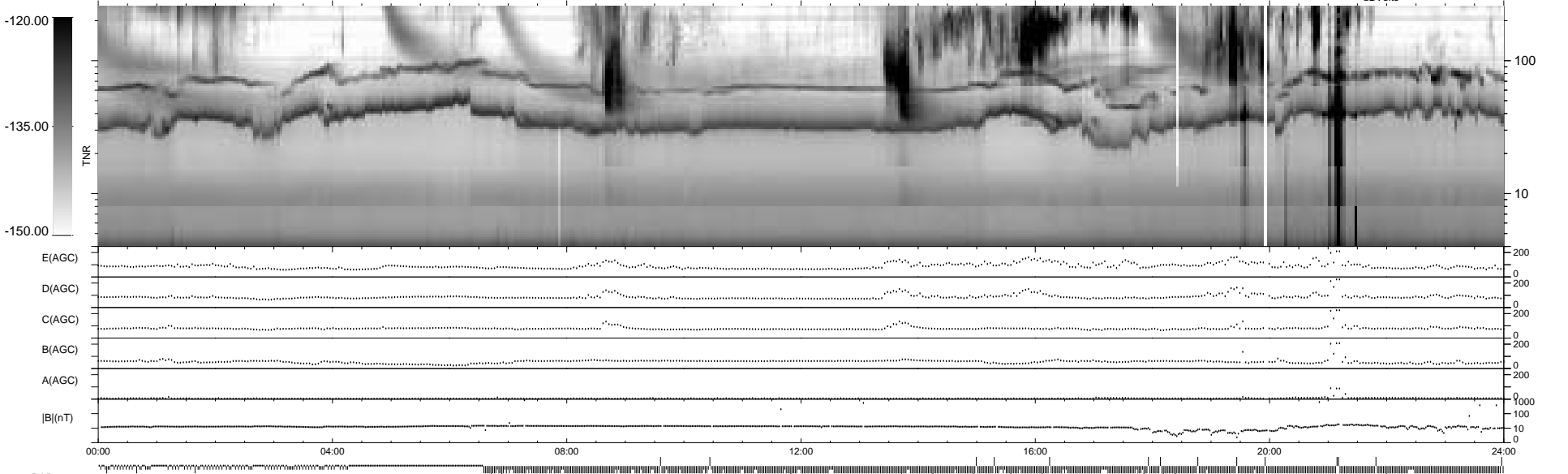
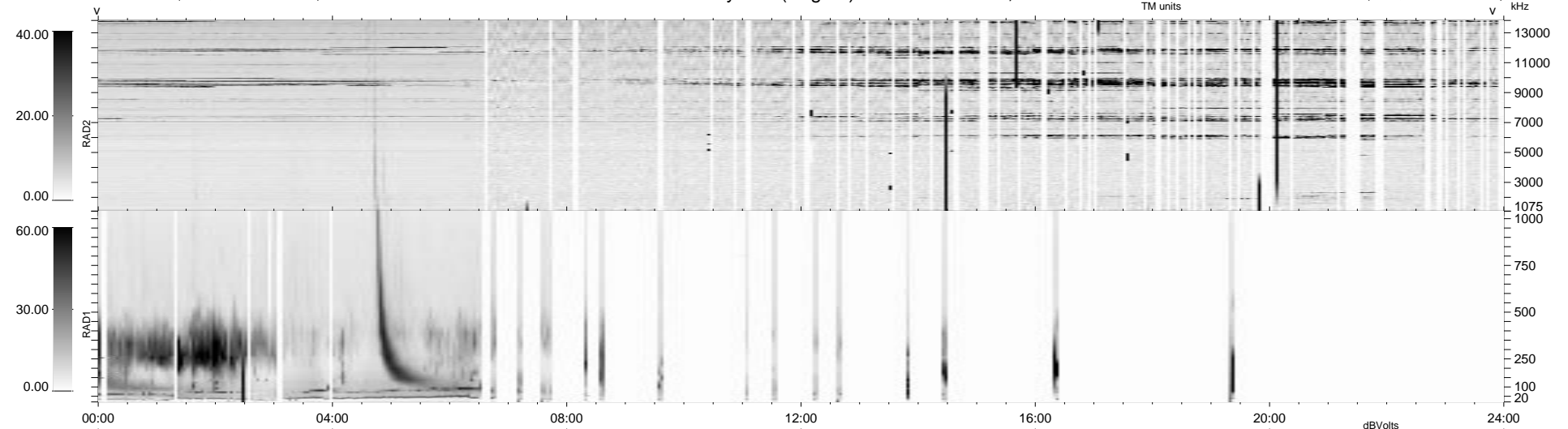


744 bad + 181 good MF/939MF projected (19%) - 14 missing MFs  
 Avg interval = 180 secs  
 Re = 58.26 (48.38, -17.16, -27.54 GSE)

1.7d VMS-SunOS LZ version = v02  
 DAILY Tue Sep 16, 2008  
 Re = 49.26 (39.53, -8.82, -28.03 GSE)

WIND/WAVES Summary Plot (Page 1) for 11-DEC-1998, DOY = 345



RAD2  
 Antenna Ey  
 Mode LIN(1)  
 SUM/SEP SEP  
 Toggle OFF

RAD1  
 Antenna Ex  
 Mode LIS(2,3)  
 SUM/SEP SUM  
 Toggle OFF

TNR  
 Antenna ExEy  
 Mode A-32  
 Sweep ABCDE