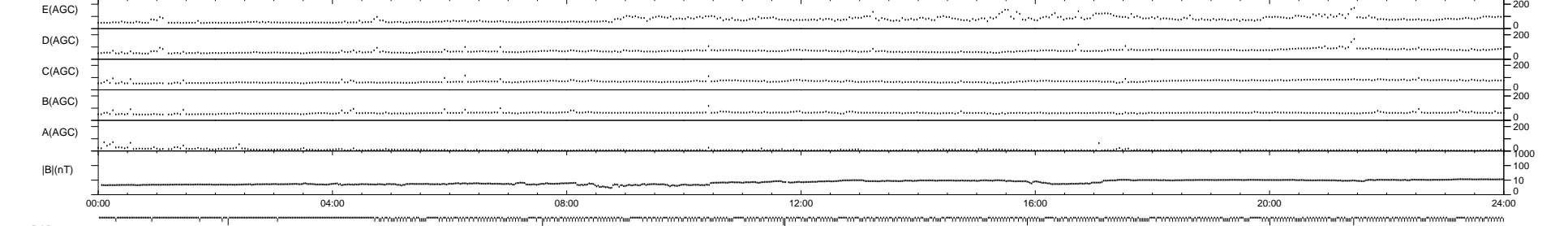
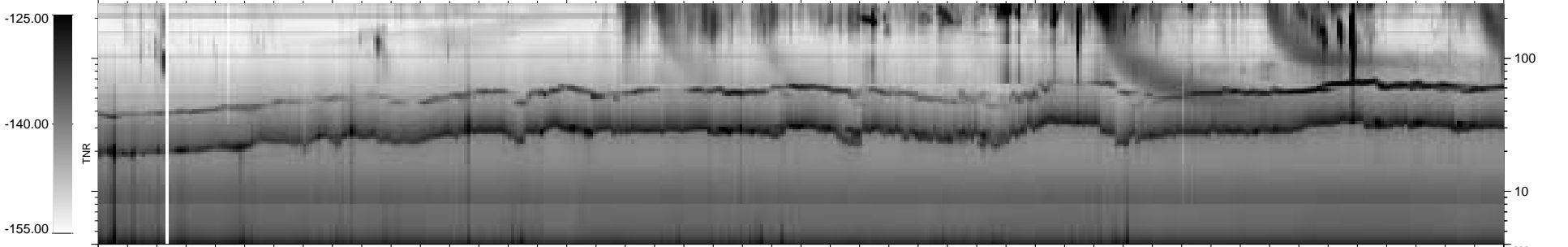
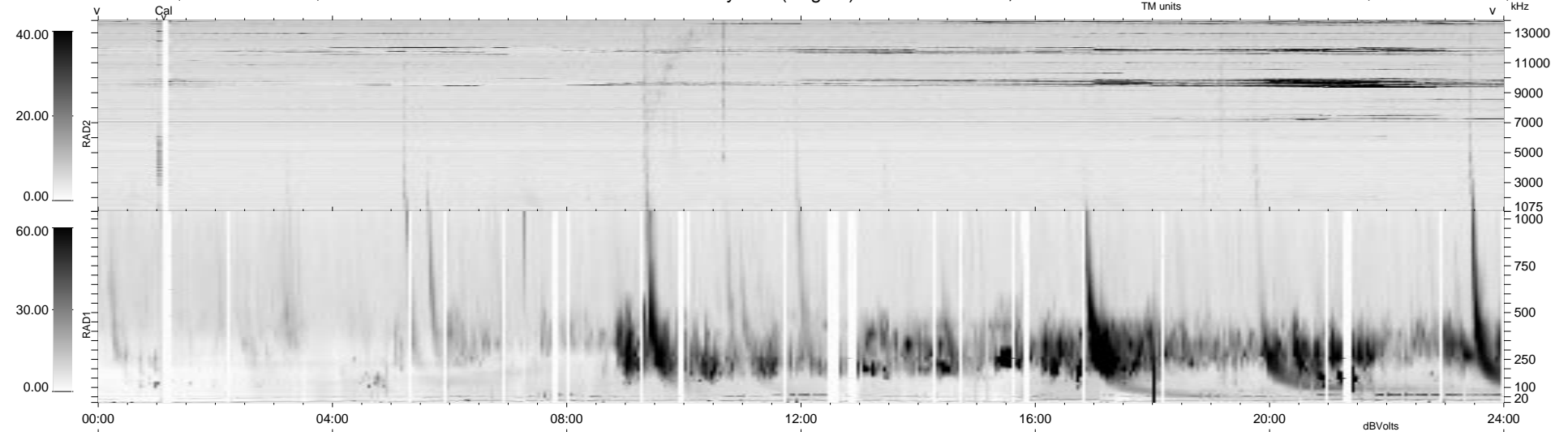


370 bad + 569 good MF/939MF projected (60%) - 0 missing MFs  
 Avg interval = 180 secs  
 Re = 65.07 (54.77, -24.28, -25.40 GSE)

1.7d VMS-SunOS LZ version = v01  
 DAILY Tue Sep 16, 2008  
 Re = 58.31 (48.44, -17.21, -27.53 GSE)

WIND/WAVES Summary Plot (Page 1) for 10-DEC-1998, DOY = 344



RAD2  
 Antenna Ey  
 Mode LIN(1)  
 SUM/SEP SEP  
 Toggle OFF

RAD1  
 Antenna Ex  
 Mode LIS(2,3)  
 SUM/SEP SUM  
 Toggle OFF

TNR  
 Antenna ExEy  
 Mode A-32  
 Sweep ABCDE