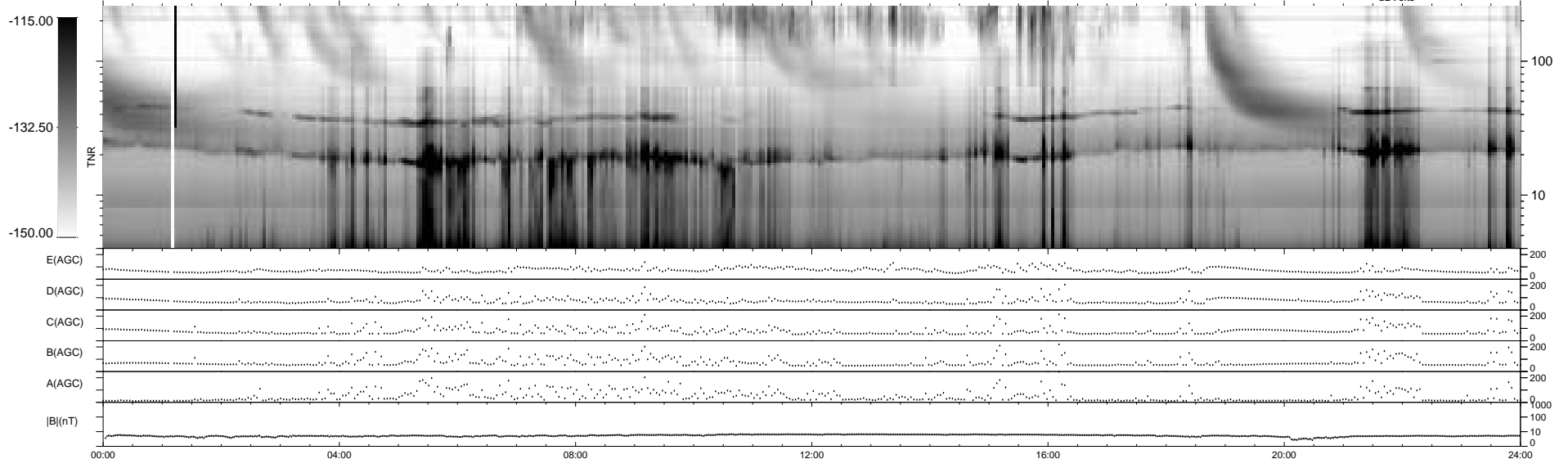
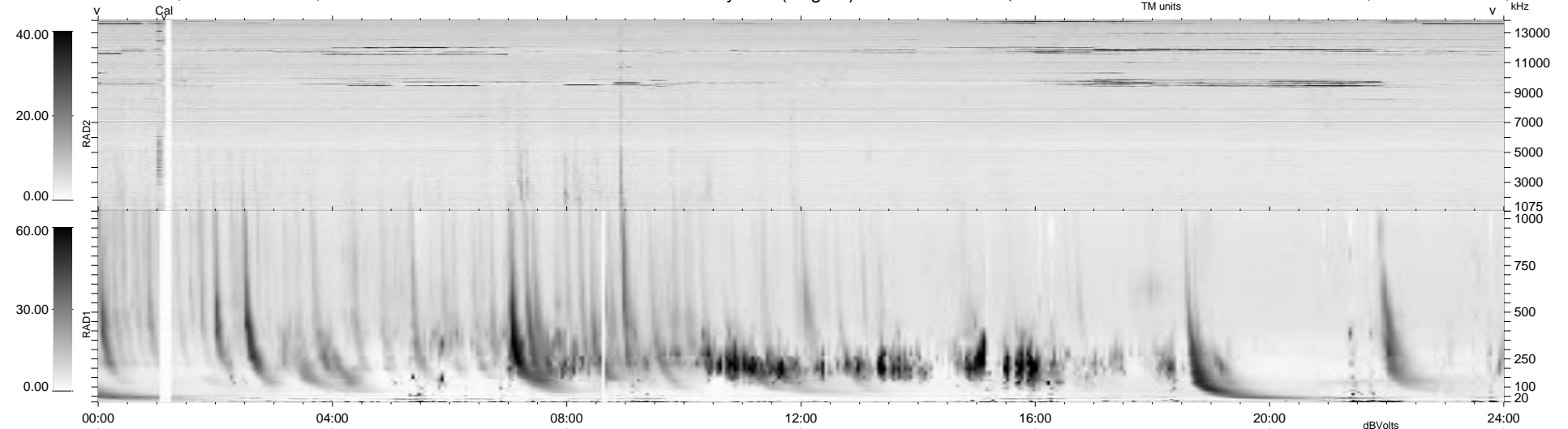


22 bad + 918 good MF/940MF projected (97%) - 0 missing MFs
 Avg interval = 180 secs
 Re = 73.22 (61.73, -34.92, -18.17 GSE)

1.7d VMS-SunOS LZ version = v01
 DAILY Tue Sep 16, 2008
 Re = 70.01 (59.15, -30.22, -22.14 GSE)

WIND/WAVES Summary Plot (Page 1) for 08-DEC-1998, DOY = 342



RAD2
 Antenna Ey
 Mode LIN(1)
 SUM/SEP SEP
 Toggle OFF

RAD1
 Antenna Ex
 Mode LIS(2,3)
 SUM/SEP SUM
 Toggle OFF

TNR
 Antenna ExEy
 Mode A-32
 Sweep ABCDE