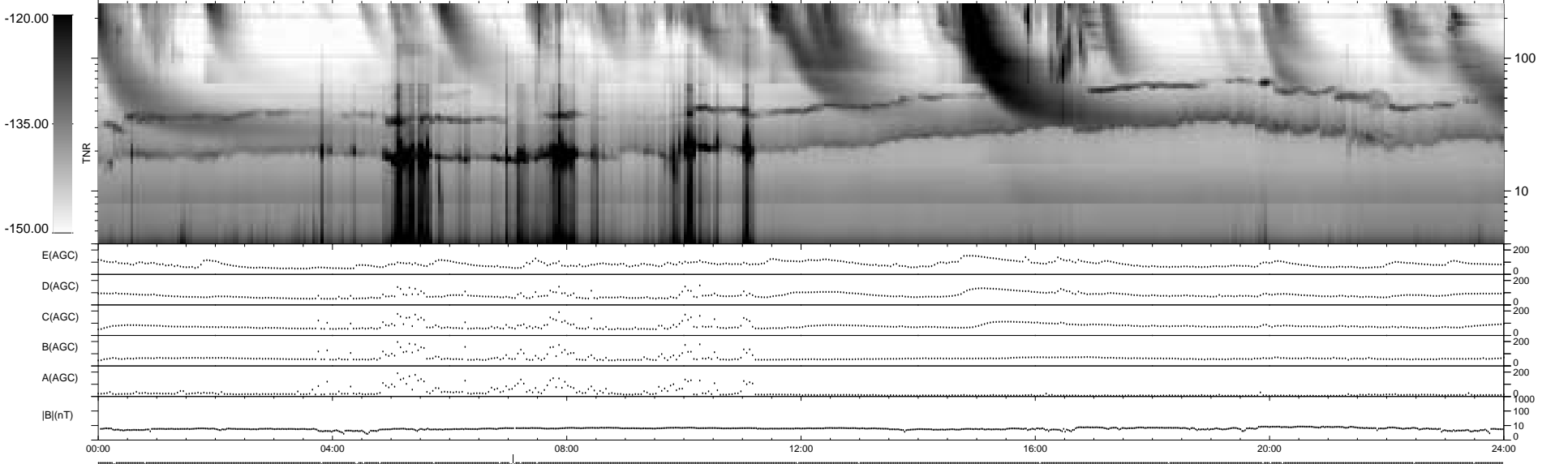
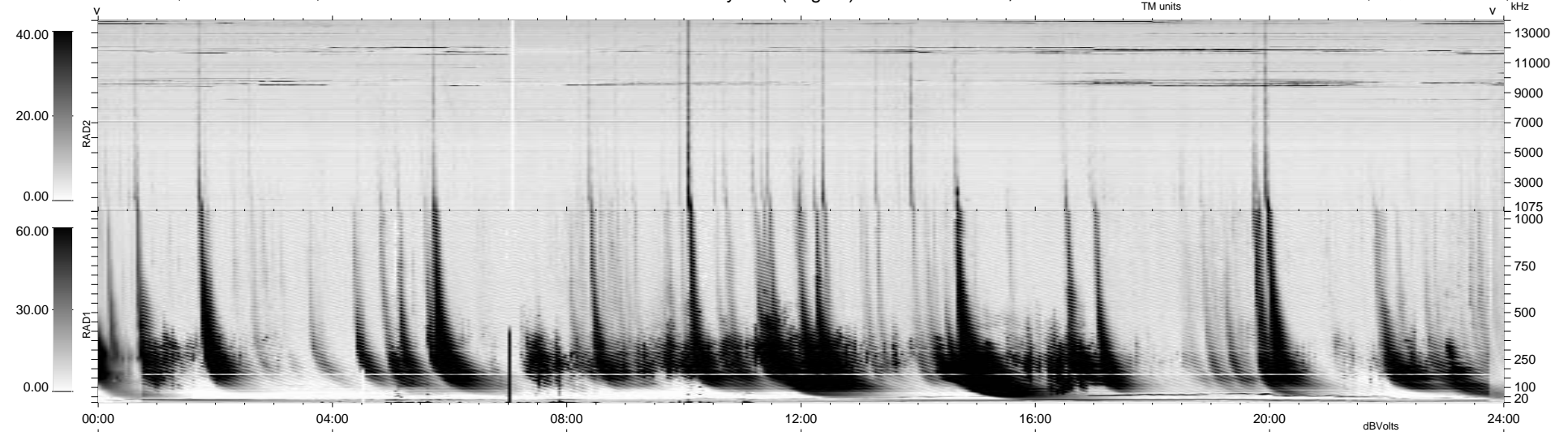


24 bad + 914 good MF/939MF projected (97%) - 1 missing MF  
 Avg interval = 180 secs  
 Re = 74.89 (62.74, -38.55, -13.63 GSE)

1.7d VMS-SunOS LZ version = v01  
 DAILY Tue Sep 16, 2008  
 Re = 73.23 (61.74, -34.95, -18.14 GSE)

WIND/WAVES Summary Plot (Page 1) for 07-DEC-1998, DOY = 341



RAD2  
 Antenna Ey  
 Mode LIN(1)  
 SUM/SEP SEP  
 Toggle OFF

RAD1  
 Antenna Ex  
 Mode LIS(2,3)  
 SUM/SEP SUM .SEP  
 Toggle OFF

TNR  
 Antenna ExEy  
 Mode A-32  
 Sweep ABCDE