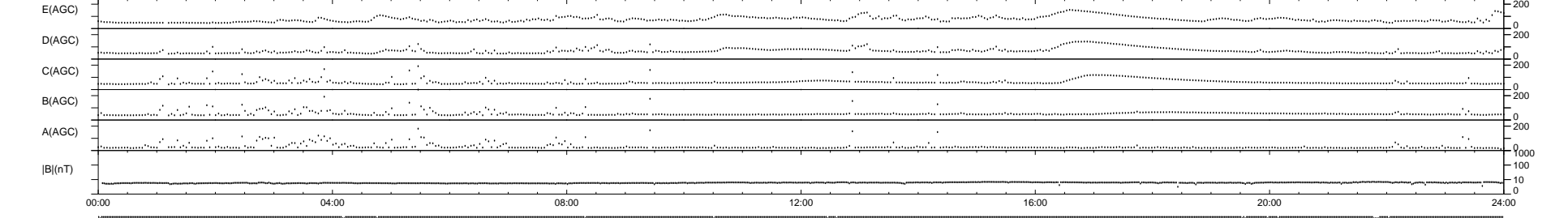
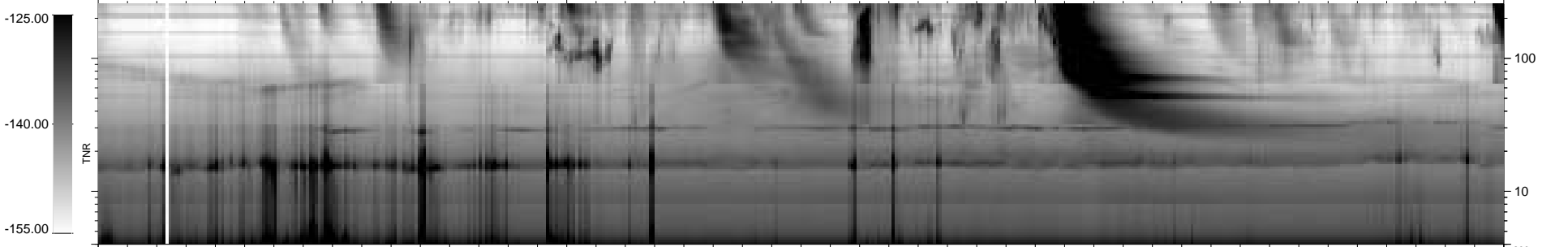
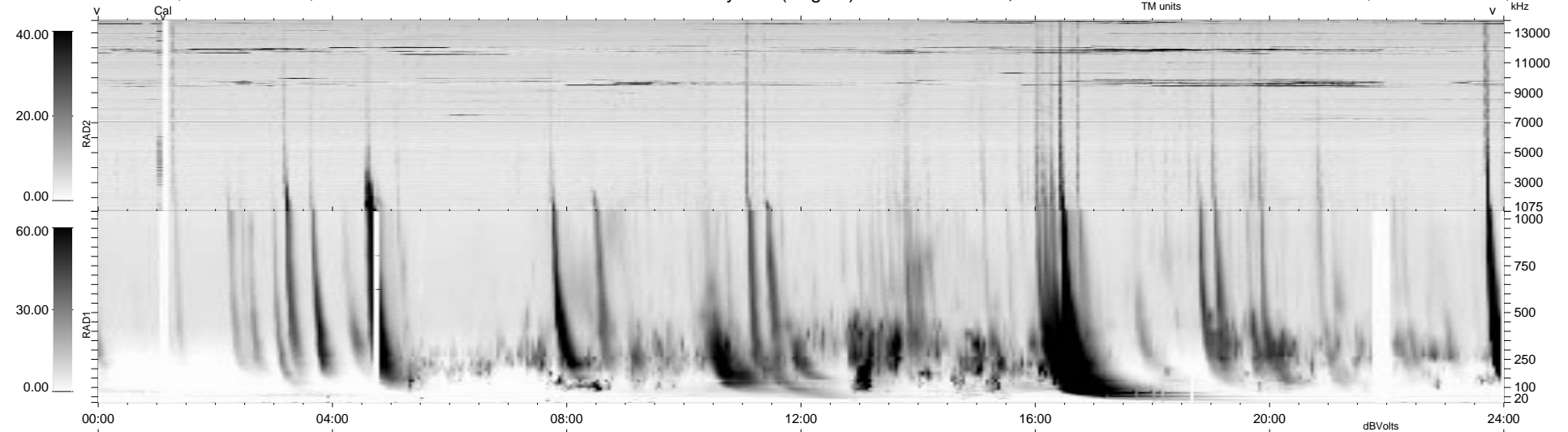


17 bad + 922 good MF/939MF projected (98%) - 0 missing MFs
 Avg interval = 180 secs
 Re = 75.06 (62.21, -41.08, -8.71 GSE)

1.7d VMS-SunOS LZ version = v01
 DAILY Tue Sep 16, 2008
 Re = 74.89 (62.74, -38.57, -13.60 GSE)

WIND/WAVES Summary Plot (Page 1) for 06-DEC-1998, DOY = 340



RAD2
 Antenna Ey
 Mode LIN(1)
 SUM/SEP SEP
 Toggle OFF

RAD1
 Antenna Ex
 Mode LIS(2,3)
 SUM/SEP SUM
 Toggle OFF

TNR
 Antenna ExEy
 Mode A-32
 Sweep ABCDE