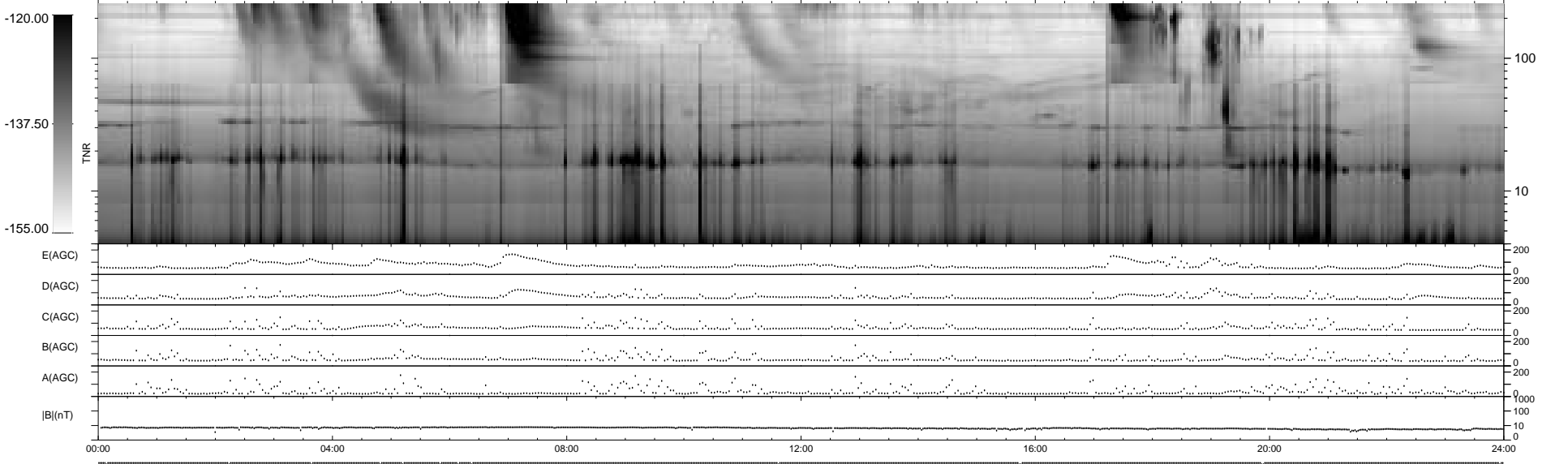
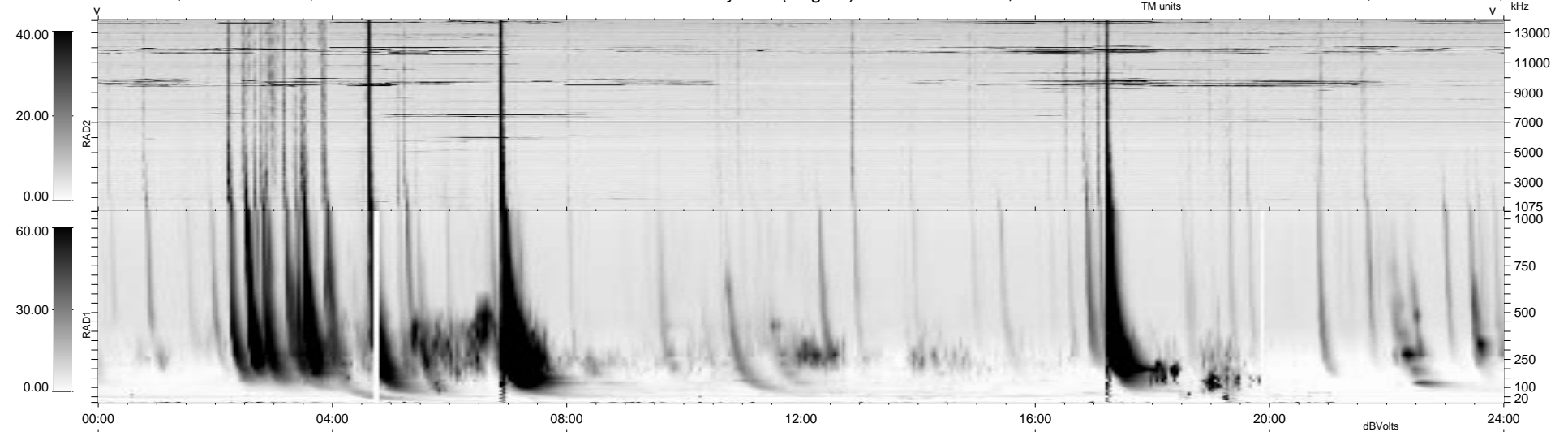


14 bad + 925 good MF/939MF projected (98%) - 0 missing MFs
 Avg interval = 180 secs
 Re = 73.74 (60.15, -42.52, -3.54 GSE)

1.7d VMS-SunOS LZ version = v02
 DAILY Tue Sep 16, 2008
 Re = 75.05 (62.20, -41.09, -8.67 GSE)

WIND/WAVES Summary Plot (Page 1) for 05-DEC-1998, DOY = 339



RAD2
 Antenna Ey
 Mode LIN(1)
 SUM/SEP SEP
 Toggle OFF

RAD1
 Antenna Ex
 Mode LIS(2,3)
 SUM/SEP SUM
 Toggle OFF

TNR
 Antenna ExEy
 Mode A-32
 Sweep ABCDE