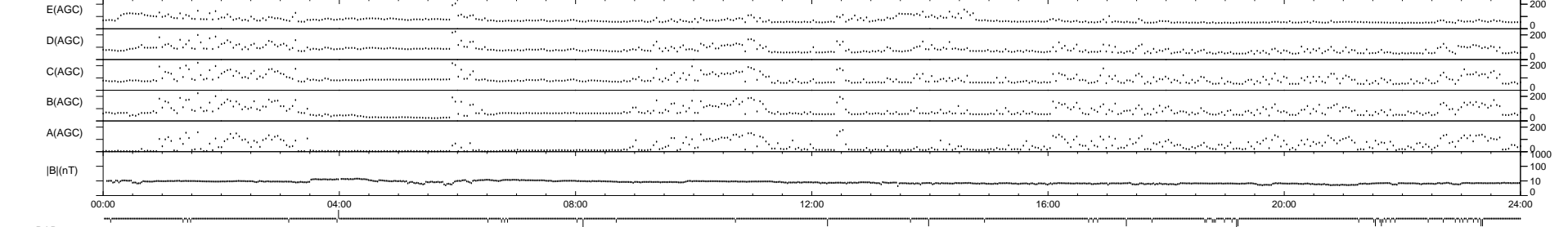
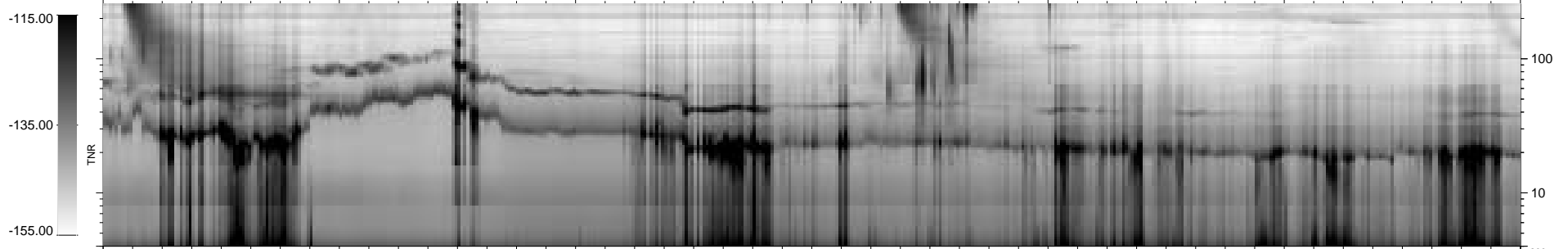
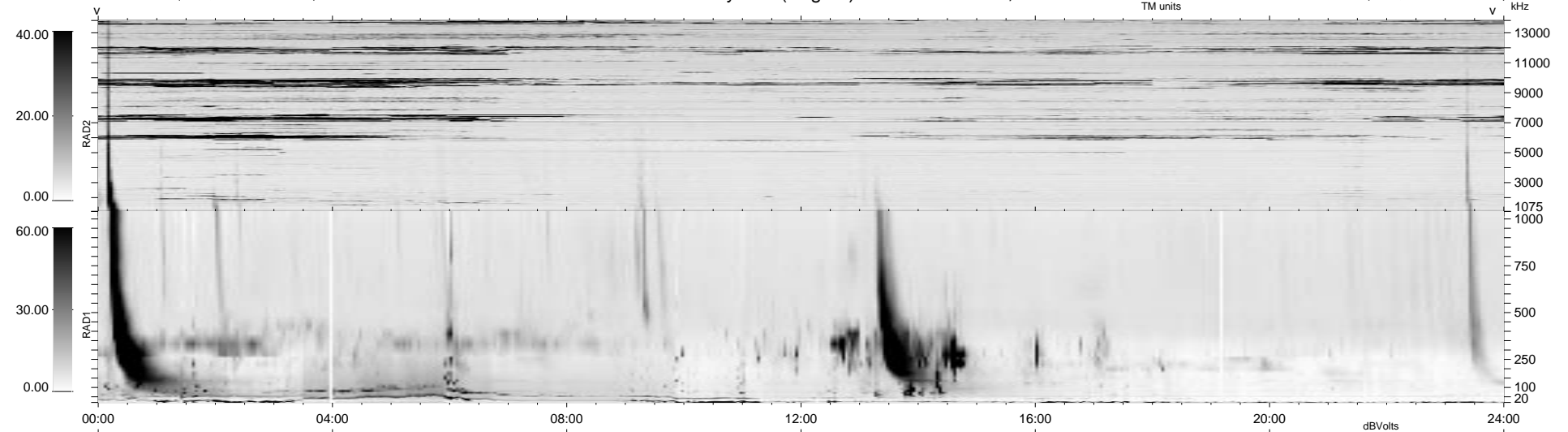


51 bad + 887 good MF/939MF projected (94%) - 1 missing MF
 Avg interval = 180 secs
 Re = 51.54 (33.85, -35.36, 16.13 GSE)

1.7d VMS-SunOS LZ version = v01

WIND/WAVES Summary Plot (Page 1) for 01-DEC-1998, DOY = 335

DAILY Tue Sep 16, 2008
 Re = 60.01 (43.57, -39.51, 11.89 GSE)



RAD2
 Antenna Ey
 Mode LIN(1)
 SUM/SEP SEP
 Toggle OFF
 RAD1
 Antenna Ex
 Mode LIS(2,3)
 SUM/SEP SUM
 Toggle OFF
 TNR
 Antenna ExEy
 Mode A-32
 Sweep ABCDE