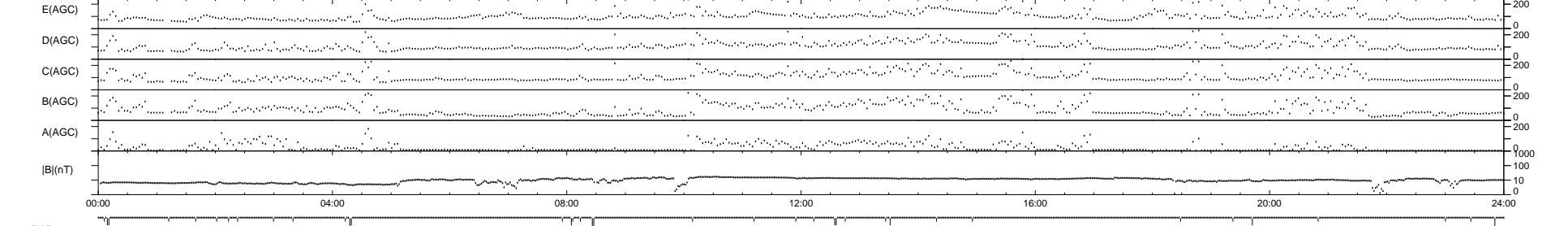
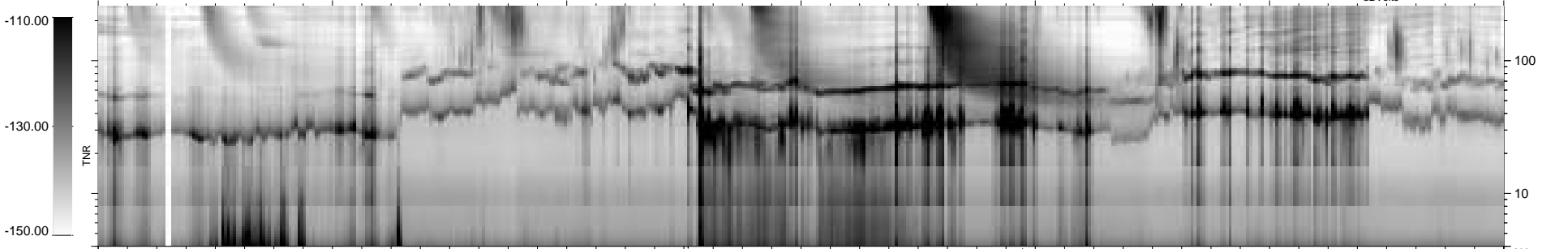
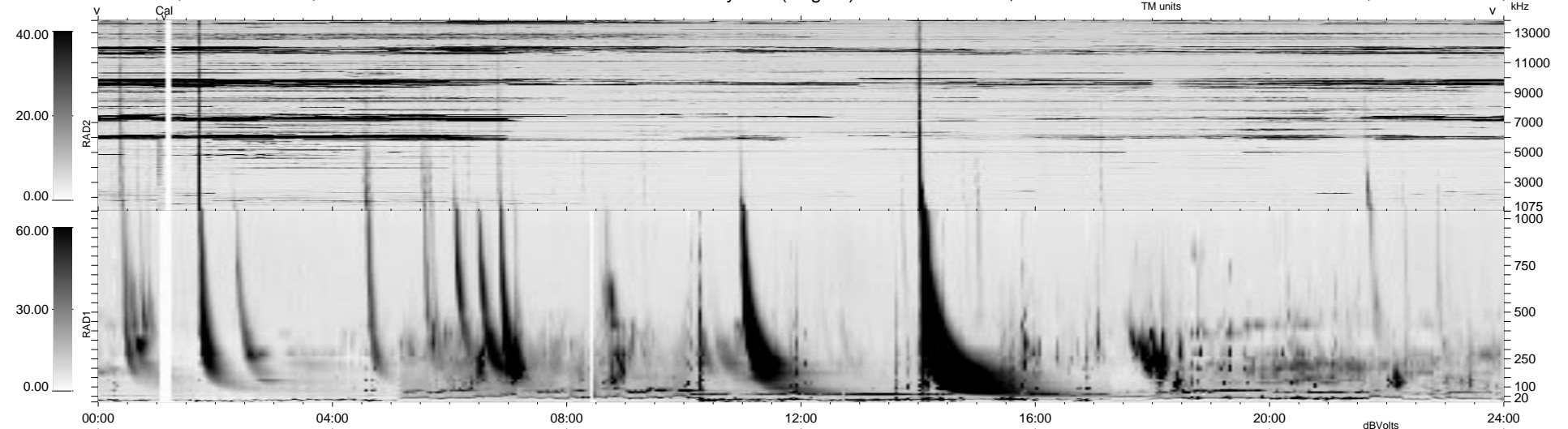


37 bad + 903 good MF/940MF projected (96%) - 0 missing MFs
 Avg interval = 180 secs
 Re = 40.23 (21.07, -28.55, 18.95 GSE)

1.7d VMS-SunOS LZ version = v01
 DAILY Tue Sep 16, 2008
 Re = 51.47 (33.77, -35.32, 16.16 GSE)

WIND/WAVES Summary Plot (Page 1) for 30-NOV-1998, DOY = 334



RAD2 Antenna Ey
 Mode LIN(1)
 SUM/SEP SEP
 Toggle OFF
 RAD1 Antenna Ex
 Mode LIS(2,3)
 SUM/SEP SUM
 Toggle OFF
 TNR Antenna ExEy
 Mode A-32
 Sweep ABCDE