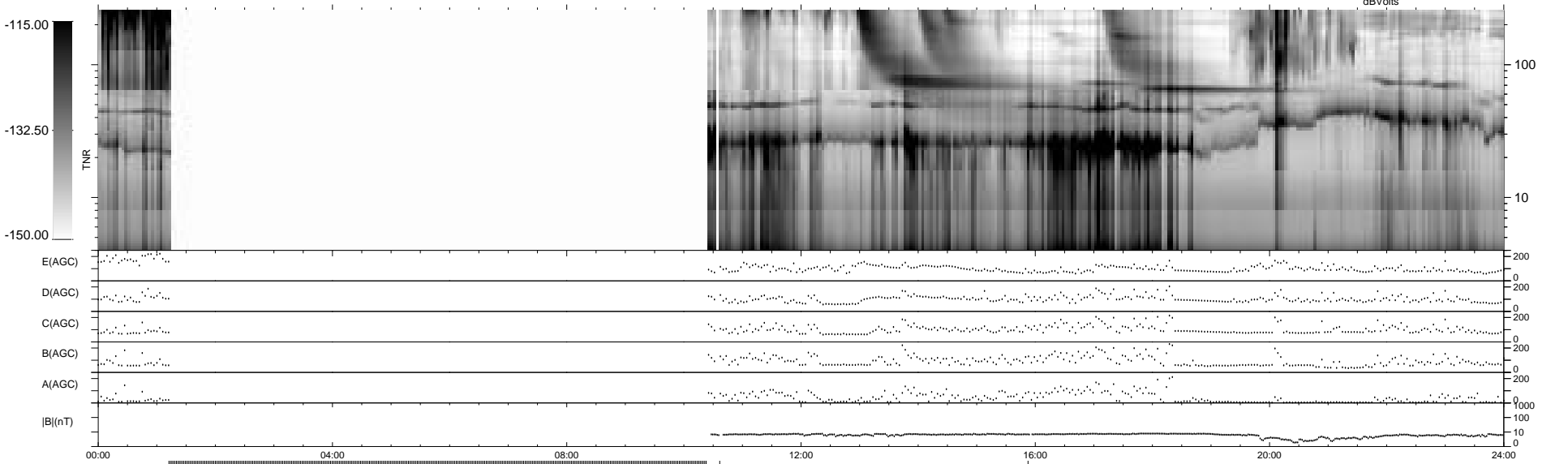
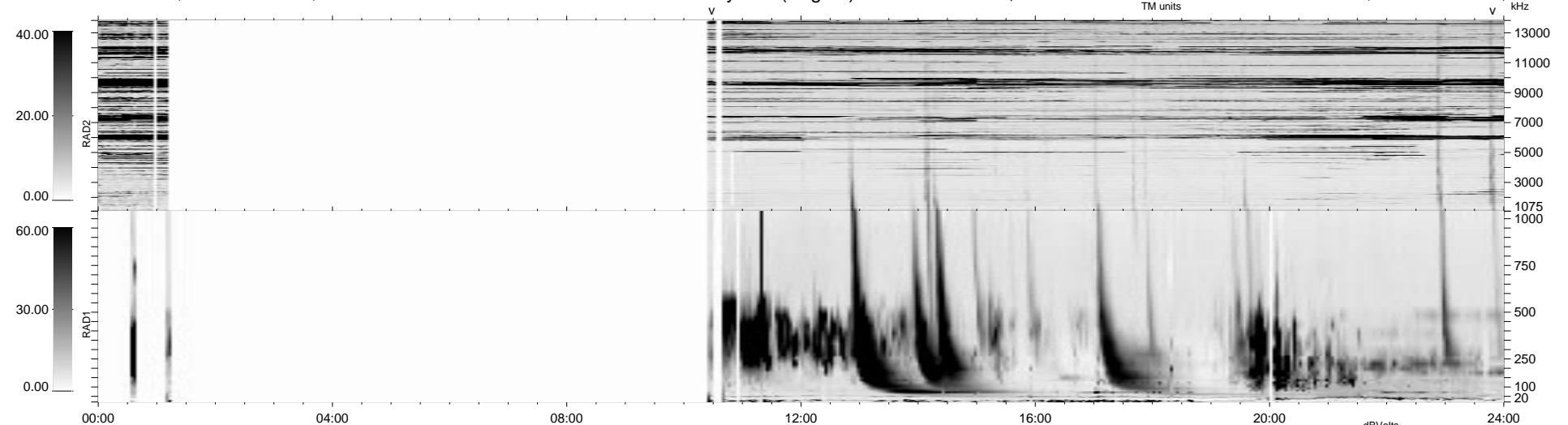


89 bad + 488 good MF/939MF projected (51%) - 362 missing MFs
 Avg interval = 180 secs
 Re = 32.25 (12.21, -22.87, 19.18 GSE)

1.7d VMS-SunOS LZ version = v01
 DAILY Tue Sep 16, 2008
 Re = 40.14 (20.97, -28.49, 18.96 GSE)

WIND/WAVES Summary Plot (Page 1) for 29-NOV-1998, DOY = 333



RAD2 Antenna Ey
 Mode LIN(1)
 SUM/SEP SEP
 Toggle OFF
 RAD1 Antenna
 Mode
 SUM/SEP
 Toggle
 TNR Antenna ExEy
 Mode A-32
 Sweep ABCDE