

17 bad + 902 good MF/939MF projected (96%) - 20 missing MFs
Avg interval = 180 secs
Re = 27.13 (14.29, 8.66, -21.38 GSE)

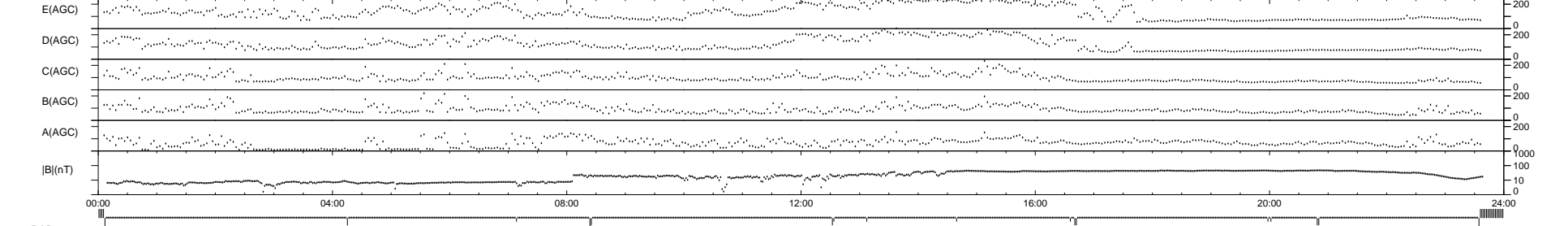
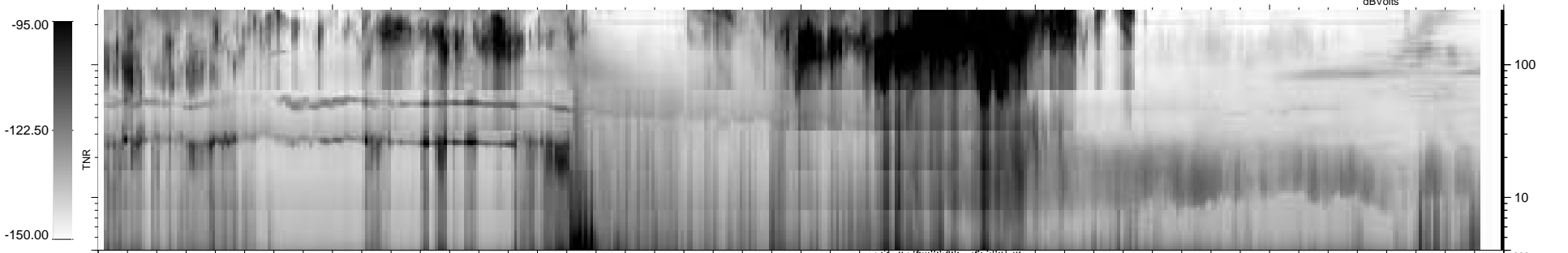
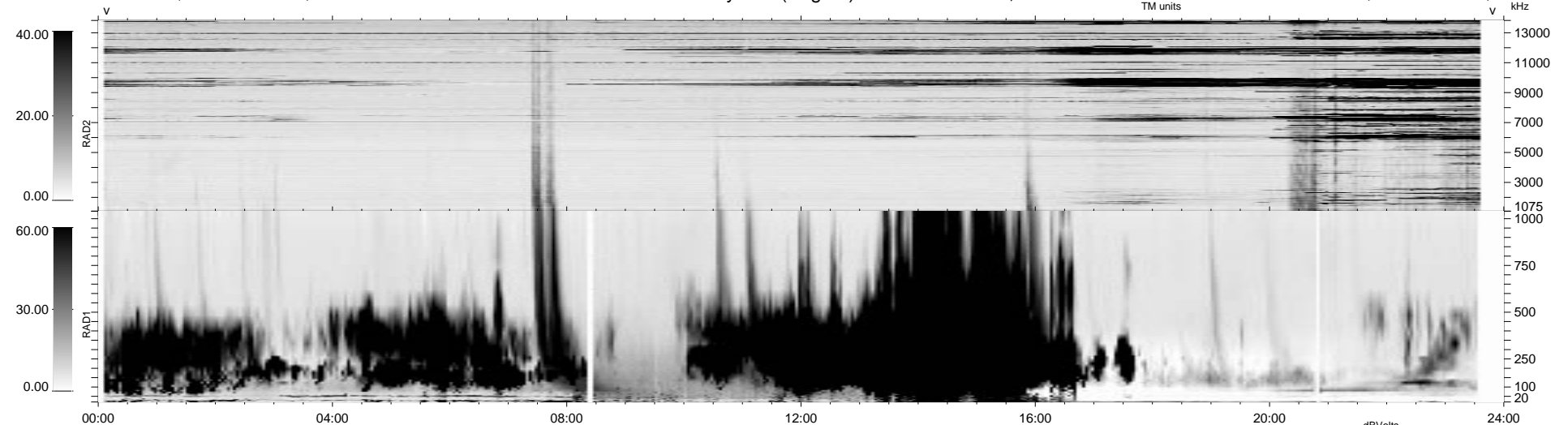
1.7d VMS-SunOS

LZ version = v01

WIND/WAVES Summary Plot (Page 1) for 27-NOV-1998, DOY = 331

DAILY Tue Sep 16, 2008

Re = 10.53 (-8.52, 6.03, -1.35 GSE)



RAD2 Antenna Mode SUM/SEP Toggle
RAD1 Antenna Mode SUM/SEP Toggle
TNR Antenna Mode Sweep